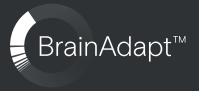


EPOS



# IMPACT 1000 Series

IMPACT 1000 is designed for the New Open Office environment. Built on EPOS BrainAdapt™ technology to reduce brain fatigue with adaptive ANC and industry-leading voice pickup powered by EPOS AI™, making sure you're getting your message through.



reddot winner 2023



We are rebranding from EPOS | SENNHEISER to EPOS branding on our products. During the transition period the same product may exist in both versions



# Key Features

## Stay comfortable throughout the day

Lightweight design, soft breathable cushions, and headband padding allow for all-day wearing comfort in the open office.

## Protect your brain in the open office

Hybrid adaptive ANC effectively shuts down noise and helps your brain focus – even in busy open office environments.

## Industry-leading voice pickup for focused conversations

Adaptive microphone technology powered by EPOS AI™ makes sure you're getting your message through.

## A new market standard for open office headsets

Experience a superior open office headset with super wideband and stereo sound. Meets Microsoft Teams Open Office requirements.

## Experience true convenience

Wireless charging stand and smart features make using the headset truly intuitive and hassle-free.

# What's in the Box

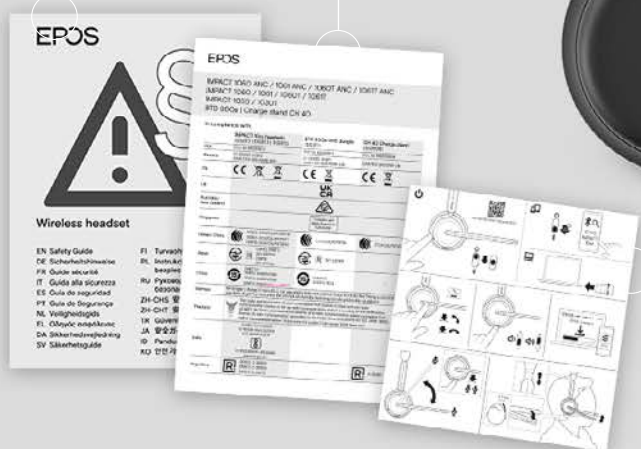
Soft Carry Pouch

BTD 800a Dongle



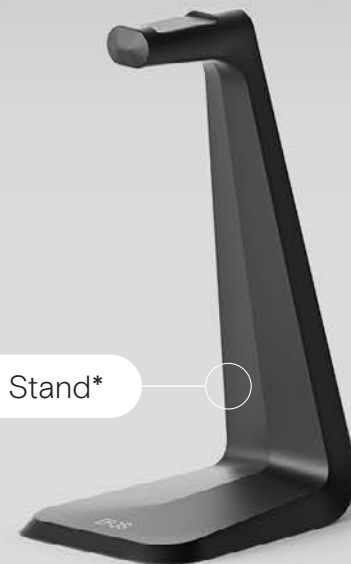
Safety Guide

Compliance Sheet



Quick Guide

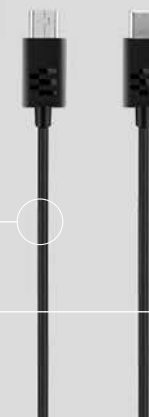
CH 40 Charging Stand\*



IMPACT 1000



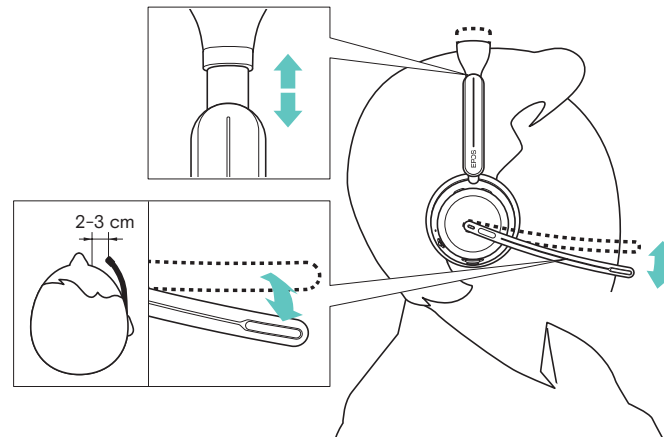
USB-C to USB-C Cable



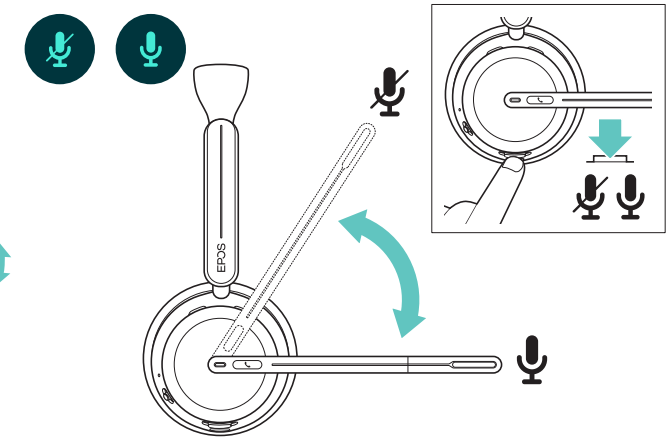
\* Included in 1061, 1061T, 1061 ANC, 1061T ANC

# How to Use the IMPACT 1000

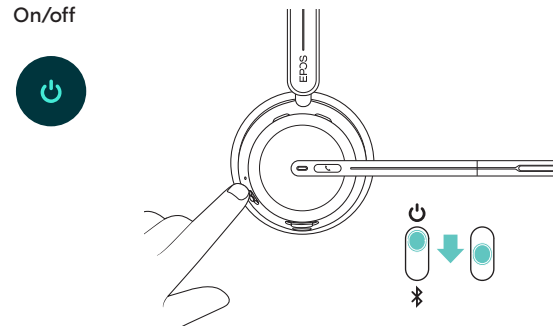
## Adjusting and wearing the headset



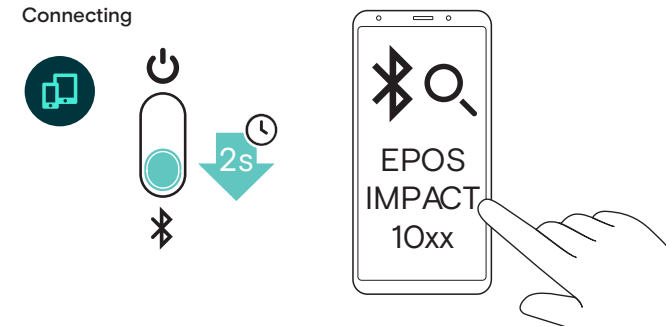
## Mute/unmute



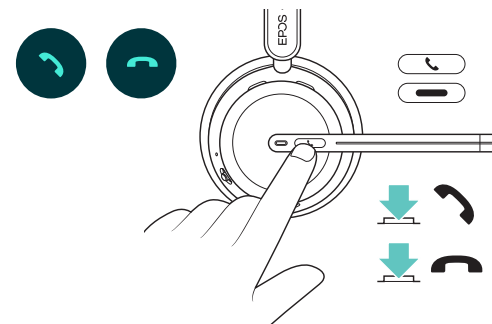
## On/off



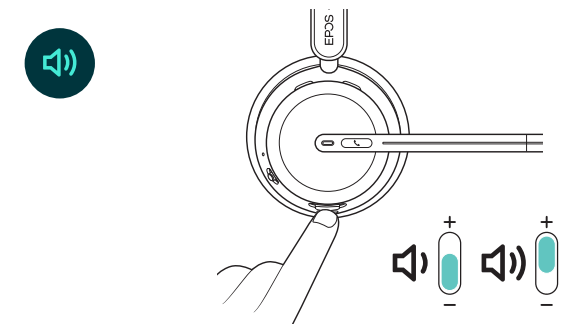
## Connecting



## Accept/end a call



## Adjusting the volume



# Additional benefits & features



## Superior EPOS sound

Super wideband audio and stereo sound deliver clear speech in noisy open offices



## Triple connectivity

Stay connected wirelessly with up to three devices at the same time



## Wireless charging stand

Charge your headset easily without the hassle of wires and plugs



## EPOS BrainAdapt™ technology

Better focus for both sides via ANC, EPOS AI™, and industry-leading voice pick-up



## TalkThrough

Communicate easily with in-office colleagues without removing the headset



## Smart features

Initiate, end, and mute calls by moving the boom arm or taking the headset on/off



## Adaptive digital microphones

Adaptive microphone technology delivers industry-leading voice pickup



## 360-degree busylight

Intuitive busylight clearly signals when you're on call and not to be disturbed



## Convenient carry pouch

Let's you easily carry the headset between your work and home office

---

# Product data

1/3

## General

|                |  |
|----------------|--|
| Wearing style  | Headband -single and double-sided variants   |
| Headset weight | Double-sided with ANC: 181 g / 6.38 oz<br>Double-sided: 171 g / 6.03 oz<br>Single-sided: 114 g / 4.02 oz |
| Connectivity   | Bluetooth® 5.3, USB-C to USB-C cable, USB-A dongle   |
| Warranty       | 2 years  |

## Audio

|  |                       |
|--|-----------------------|
| Speaker frequency response             | 20 Hz - 20 KHz        |
| Microphone type                        | 4 digital MEMS        |
| Microphone frequency response          | 100 Hz - 16 KHz       |
| Active Noise Cancellation              | Yes. Hybrid, Adaptive |
| Bandwidth in call mode (Speaker + Mic) | Super Wideband        |

---

# Product data

2/3

## Products variants

---

IMPACT 1030/1030T

---

IMPACT 1060/1060 ANC/1060T/1060T ANC

---

IMPACT 1061/1061T/1061 ANC/1061T ANC

---

## Software

---

EPOS devices can be managed with following Software solutions:

---

EPOS Connect

---

EPOS Manager

---

## What's in the box

---

Single-sided headset, soft carry pouch, Bluetooth® USB dongle (BTD 800a), USB-C Cable (1.2m), Safety & Compliance sheet

---

Double-sided headset, soft carry pouch, Bluetooth® USB dongle (BTD 800a), USB-C Cable (1.2m), Safety & Compliance sheet.

---

Double-sided headset, soft carry pouch, Bluetooth® USB dongle (BTD 800a), USB-C Cable (1.2m), Safety & Compliance sheet. Wireless charging stand (CH 40).

---

Conduct firmware updates and configure headsets for personal audio preferences.

EPOS Connect works for Windows, Mac® and VDI/Thin client environments: [eposaudio.com/software-epos-connect](https://eposaudio.com/software-epos-connect)

---

Manage, update and configure EPOS audio devices from any location.

For both cloud and on-premises solutions: [eposaudio.com/software-epos-manager](https://eposaudio.com/software-epos-manager)

---

# Product data

3/3

| Product                              | Connects to                     | Certifications                                  | EAN code         | UPC code        |
|--------------------------------------|---------------------------------|---|------------------|-----------------|
| IMPACT 1060 ANC<br>Art. no. 1001130  | Softphone/PC and mobile devices | Optimized for UC. Certified for Google Meet     | 57 14708 00932 0 | 8 40064 40932 2 |
| IMPACT 1061 ANC<br>Art. no. 1001131  | Softphone/PC and mobile devices | Optimized for UC. Certified for Google Meet     | 57 14708 00933 7 | 8 40064 40933 9 |
| IMPACT 1030<br>Art. no. 1001132      | Softphone/PC and mobile devices | Optimized for UC. Certified for Google Meet     | 57 14708 00934 4 | 8 40064 40934 6 |
| IMPACT 1060<br>Art. no. 1001134      | Softphone/PC and mobile devices | Optimized for UC. Certified for Google Meet     | 57 14708 00936 8 | 8 40064 40936 0 |
| IMPACT 1061<br>Art. no. 1001135      | Softphone/PC and mobile devices | Optimized for UC. Certified for Google Meet     | 57 14708 00937 5 | 8 40064 40937 7 |
| IMPACT 1060T ANC<br>Art. no. 1001136 | Softphone/PC and mobile devices | Optimized for UC. Certified for Microsoft Teams | 57 14708 00938 2 | 8 40064 40938 4 |
| IMPACT 1030T<br>Art. no. 1001137     | Softphone/PC and mobile devices | Optimized for UC. Certified for Microsoft Teams | 57 14708 00939 9 | 8 40064 40939 1 |
| IMPACT 1060T<br>Art. no. 1001138     | Softphone/PC and mobile devices | Optimized for UC. Certified for Microsoft Teams | 57 14708 00940 5 | 8 40064 40940 7 |
| IMPACT 1061T ANC<br>Art. no. 1001171 | Softphone/PC and mobile devices | Optimized for UC. Certified for Microsoft Teams | 57 14708 00975 7 | 8 40064 40975 9 |
| IMPACT 1061T<br>Art. no. 1001173     | Softphone/PC and mobile devices | Optimized for UC. Certified for Microsoft Teams | 57 14708 00977 1 | 8 40064 40977 3 |



---

# Spare parts

1/1

| Product | Art. no. | Description                    | EAN code         | UPC code        |
|---------|----------|--------------------------------|------------------|-----------------|
| CH 40   | 1001139  | Wireless Charging stand. USB C | 57 14708 00941 2 | 8 40064 40941 4 |

---

---

# Appendix

1/1

## Additional product data

---

EPOS ActiveGard® technology

---

Protects users against acoustic injury caused by sudden sound burst on the line

---

EU Noise at Work limiter\*

---

Enhanced audio protection preventing listening fatigue, average 85 dB over a workday

---

EPOS Voice™ technology

---

For a clear and natural listening experience

---

Talk time (hours)

---

ANC ON: 19 hours  
ANC Off: 20 hours

---

Charging time

---

With cable: 1.5 hours  
Wireless charging: 2.5 hours

---

Standby time

---

ANC ON: 50 hours  
ANC OFF: 300 hours

---

Wireless Range

---

Up to 30 m / 100 ft

---

Multipoint Connectivity

---

Triple Connectivity

---

Busylight

---

Yes, 360-degree

---

\* In compliance with EU Noise at Work legislation (Directive 2003/10/EC), that sets limits for two types of noise in the workplace: Acoustic burst and Sustained noise.