

# PRO-ELEC



**1500W 7 FIN OIL FILLED HEATER**  
**Model: PELL0211 and PELL0212**

## IMPORTANT SAFETY INFORMATION

**Please read these instructions carefully before use and retain for future reference.**

- When using electrical appliances basic safety precautions should always be followed.
- Check that the voltage indicated on the rating plate corresponds with that of the local network before connecting the appliance to the mains power supply.
- The appliance must be used on a stable surface.
- In order to avoid overheating do not cover the heater.
- This appliance is intended for domestic use only. It should not be used for commercial purposes.
- Always turn the product to the OFF position and unplug it from the electrical outlet when not in use.
- The heater must not be located immediately below an electrical socket-outlet.
- Do not operate the heater with a damaged cord or plug, or after the heater malfunctions, has been dropped, or damaged in any manner.
- If the supply cord is damaged, it must be replaced by the manufacturer or its service agent or a similarly qualified person to avoid a hazard.
- This heater is filled with a precise quantity of oil. Repairs requiring the opening of the oil container are only to be made by the manufacturer or his service agent who should be contacted if there is an oil leak.
- This appliance contains no user-serviceable parts.
- When scrapping the heater, follow the regulations concerning the disposal of oil.
- Don't use this heater in the immediate surroundings of a bath, a shower or a swimming pool or where it may fall into a bathtub or other water container.
- This appliance can be used by children aged from 8 years and above and persons with reduced physical, sensory or mental capabilities or lack of experience and knowledge if they have been given supervision or instruction concerning use of the appliance in a safe way and understand the hazards involved. Children shall not play with the appliance. Cleaning and user maintenance shall not be made by children without supervision.
- Children of less than 3 years should be kept away unless continuously supervised.
- Children aged from 3 years and less than 8 years shall only switch on/off the appliance provided that it has been placed or installed in its intended normal operating position and they have been given supervision or instruction concerning use of the appliance in a safe way and understand the hazards involved. Children aged from 3 years and less than 8 years shall not plug in, regulate and clean the appliance or perform user maintenance.
- The appliance must be unplugged from the power supply after use and whilst any maintenance such as cleaning is carried out.
- This heater includes an overheat protection system that shuts off the heater when parts of the heater are getting excessively hot.
- This heater is a high-power product. A worn mains socket will result in over-heating of the plug and socket. If this occurs consult a qualified electrician.
- Do not use an extension lead – most are unable to handle the power this product requires.

**CAUTION** - Some parts of this product can become very hot and cause burns. Particular attention has to be given where children and vulnerable people are present.

## PRODUCT OVERVIEW



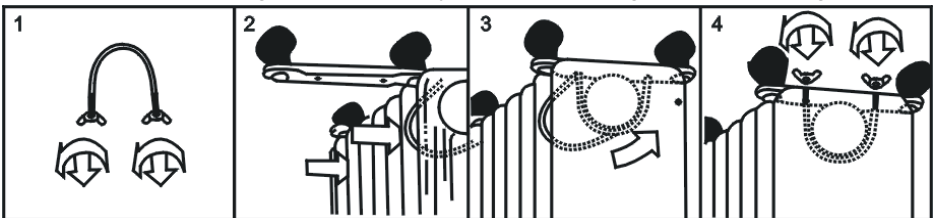
1. Power switch
2. Thermostat control
3. Timer
4. Cord storage
5. Radiator fins
6. Castors

## ASSEMBLY INSTRUCTIONS

- The heater is packaged with the feet unattached. You must attach them before operating the heater.

**WARNING:** Do not operate without feet attached. Only operate the heater in an upright position (feet on the bottom, controls on the top), any other position could create a hazardous situation.

1. Place the radiator body upside-down on a scratch-free location, make sure it is stable and will not fall.
  2. Remove the wing nuts from the U-bolt provided (see Fig 1), insert the U-shaped bolt around the flange between first pair of fins (near the front cover) (see Fig 2).
  3. Insert the threaded ends of the U bolt through the holes on the castor mounting plate (see Fig 3).
  4. Screw the wing nuts back on to the U bolt and tighten (see Fig 4).
  5. Repeat with the rear castor inserting the U-bolt between rearmost pair of fins
- Note: do not over-tighten, as this may cause the damage of radiator flange.

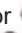



## INSTRUCTIONS FOR USE

- Before using the heater, make sure that it is on a flat and stable surface. Damage may occur if it is placed on an incline or uneven surface.
- Set all the controls to OFF position and insert the plug into a mains socket
- Set the timer by turning the dial clockwise (do not turn it counter clockwise) until the pointer arrow aligns to the correct time. Mains power is required to keep the clock running.
- Rotate the thermostat knob clockwise to MAX position and switch the heater on.


- Switch I is for low heat, switch II for medium heat and turn both switches on for high heat. When the heating element is on the power switch will illuminate.
- When your room reaches the desired temperature, slowly rotate the thermostat control counter clockwise until the power light goes out. The thermostat can now be left at this setting. As soon as the room temperature has dropped below the set temperature, the unit will switch it self on automatically until the set temperature has been reached again. In this way the room temperature remains constant with the most economical use of electricity.
- If you want to change the room temperature setting, rotate the thermostat knob clockwise to raise the temperature, or counter clockwise to lower it.

## USING THE TIMER

- The timer has a small red switch, the function is as follows: I=Heater is under manual control or =Timer function is ON.
- Set the timer to  position. There are 96 small plastic pins around the timer, each correspond to 15 minutes interval.
- When the pins are set outward the heater will be ON and when set inwards the heater will be turned OFF.



**CAUTION:** Do not use the timer function unattended.

- The heater will not operate if timer is set to the  position but the pins have not been set accordingly or the thermostat is set too low.
- If the heater loses its electricity supply, e.g. switched off at the mains socket or in the even of a power failure, the time should be reset after the power on again.

## CLEANING AND MAINTENANCE

- Always remove the plug from the mains socket and allow the radiator to cool down before cleaning the heater.
- Wipe the radiator with a soft damp (not wet) cloth.
- Do not use any cleaning chemicals such as detergents and abrasives.

## SPECIFICATIONS

Model	PELL0211 & PELL0212	Heat Output	
Rated Voltage	220-240VAC	Nominal heat output $P_{nom}$	0,7001kW
Frequency	50Hz	Min heat output $P_{min}$	0kW
Rated Power	1500W	Max heat output $P_{max}$	0,7001kW
<b>Auxiliary electricity consumption</b>			
At nominal heat output $e_{lmax}$			0kW
At minimum heat output $e_{lmin}$			0kW
In standby mode $e_{lsb}$			N/A
With mechanical thermostat room temperature control plus day timer			YES/YES



## INFORMATION ON WASTE DISPOSAL FOR CONSUMERS OF ELECTRICAL & ELECTRONIC EQUIPMENT.

When this product has reached the end of its life it must be treated as Waste Electrical & Electronic Equipment (WEEE). Any WEEE marked products must not be mixed with general household waste, but kept separate for the treatment, recovery and recycling of the materials used. Contact your local authority for details of recycling schemes in your area.

Made in China

PO Box 13362 Dublin 2

PR2 9PP

Man Rev 1.1

As is typical for all portable heaters -

This product is only suitable for well insulated spaces or occasional use.

**UK  
CA  
CE**