



Custom-fit for the iPad 9/8/7

Exponentially more protective and with more functional features than its predecessors, the Shield Extreme-X2 provides a perfect fit for the iPad 9 and other 10.2" iPads. The new design layers soft TPE inside with a tough TPU exterior for greater shock dissipation to protect from drop and impact damage. The removable screen protector enables easy replacement and reinsertion as needed. The virtually break-proof FlexStand kickstand provides unlimited, stable positioning options thanks to the easy-sliding friction hinge. The custom-fit design delivers easy access to all ports, openings, and buttons. Durable, updated corner anchors make it easy to add an (optional) hand strap, shoulder strap or any clip-on accessory.

Shield Extreme-X2 iPad Case

Extra protection, unlimited viewing angles

Shield Extreme-X2 iPad Case

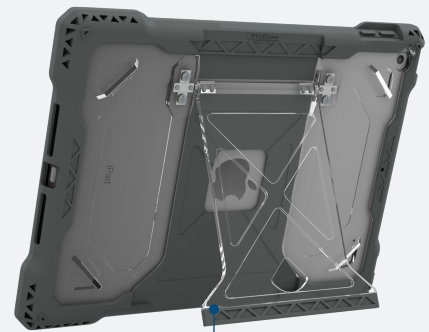
Extra protection, unlimited viewing angles

KEY FEATURES

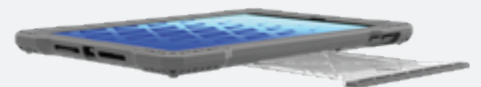
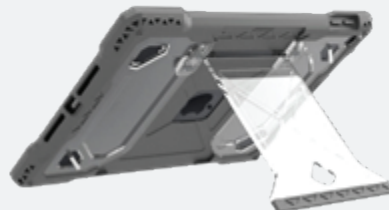
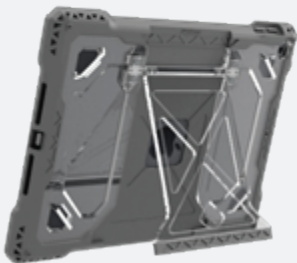
- Custom-fit design for the iPad 9; also compatible with the iPad 7 and 8
- Friction-hinge FlexStand kickstand smoothly slides into unlimited viewing angles, holds securely in place, and is virtually break-proof
- Inner layer of TPE protects against drop damage with increased shock dissipation
- Outer layer of tough TPU resists shocks, grease, and abrasion
- Commercial-grade, removeable/replaceable screen protector
- Rigid and clear scratch-resistant back panel
- Precision-fit access to all ports and functions
- Durable corner anchors enable easy add-on of (optional) shoulder strap or hand strap
- Clear visibility to asset tags

DESIGNED FOR APPLE IPAD 9
(COMPATIBLE WITH IPAD 7/8)

AP-SXX2-IP9-BLK SHIELD EXTREMEX2 FOR IPAD 9 10.2"



Smooth friction-hinge kickstand delivers unlimited positioning



www.maxcases.com

US
(888) 799-6837
sales@maxcases.com

UK/EU
+44 151 909 3980
sales@max-cases.co.uk