

Highly efficient and versatile for scanning a wide range of document types in high quality.

**DR-F120**

A4 Desktop Scanner with ADF & Flatbed

**you can**







imageFORMULA

**Canon**



# For offices that need to scan a wide range of document types quickly and easily.

Enjoy an effortless and speedy scanning solution with the versatile imageFORMULA DR-F120 scanner, featuring an integrated automatic document feeder and flatbed unit. It's perfect for capturing a wide range of document types in high quality.

 <b>B&amp;W SPEED</b>	 <b>COLOUR SPEED</b>	 <b>DAILY DUTY CYCLE</b>	 <b>AUTOMATIC DOCUMENT FEEDER</b>
20ppm	10ppm	800 scans/day	50 sheets

A4 Portrait speed, 200dpi

## Maximised productivity

Capture various types of documents accurately and efficiently with the DR-F120: a compact all-in-one scanning solution that offers both an automatic document feeder (ADF) and flatbed. You can save yourself valuable time using the 50-sheet document feeder, with its faster 20ppm scanning speeds. The DR-F120 can be relied on to get through your work with capability to handle up to 800 scans a day.



## Superior image quality

The DR-F120 delivers superior quality results time after time, due to its 600dpi scanning, wide range of built-in image enhancement features and Canon's renowned imaging technology. You'll achieve unprecedented colour accuracy that stays true to the original document via the scanner's 3-Dimensional Color Correction function.



## Versatile paper handling

The DR-F120 gives you complete flexibility to scan a wide range of materials despite its compact body size and small footprint. The ADF path accommodates A4-width documents, and media of up to 1,000mm in length. You'll enjoy increased reliability and time-savings when scanning mixed documents with Canon's dependable separation and feed roller mechanism. The flatbed scanner is ideal for handling media like books, passports or magazines, and effortlessly captures pages up to legal size. It's equally at home with photos or other thick, thin and delicate documents.



## Simple, user friendly operation

Easy “one-touch” job button scanning directly from the scanner operation panel

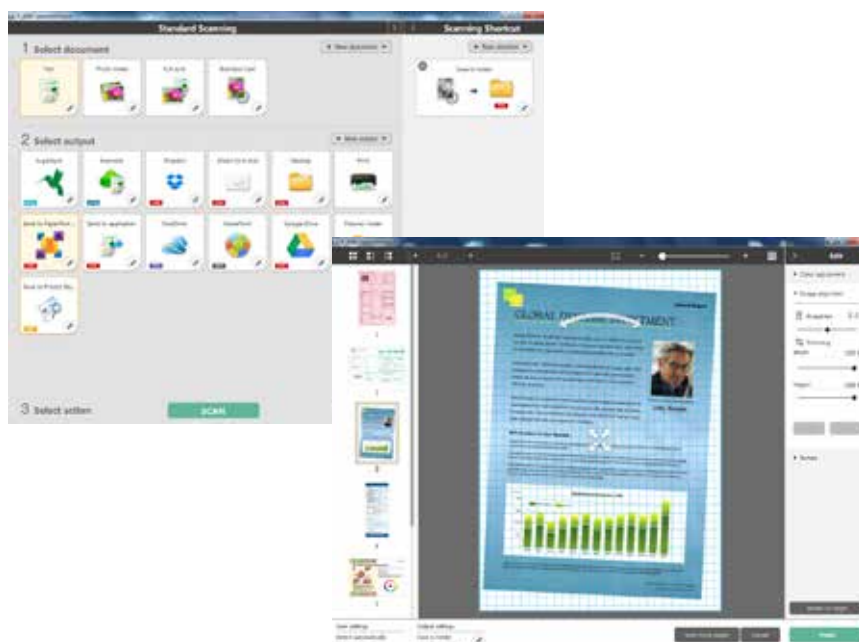
Achieve superb results with just a single touch of a button using the Full Auto Mode that automatically applies the best settings for each scanned image. Built-in tools eliminate blank pages and automatically detect paper size and text orientation; while the automatic deskew feature straightens documents fed at an angle. Frequent tasks can be made even simpler by assigning them to the 3 job buttons on the scanner panel.



## Powerful, intuitive software that enhances your productivity

### Capture OnTouch

The DR-F120 offers a simple and intuitive scanning experience using Canon’s CaptureOnTouch software. Users can scan, edit and send their documents even more easily with this versatile scanning solution. Its step-by-step, icon-based user interface lets users quickly convert their paper documents to multiple file formats (PDF, TIFF, JPEG, BMP, PNG and PowerPoint). CaptureOnTouch is equally capable as a simple document filing solution that lets users scan and create searchable PDF documents - including easy text-based search and retrieval.



### Cloud service plug-ins

The CaptureOnTouch software includes plug-ins for connecting to cloud and ECM services such as Evernote, Google Drive™, Microsoft SharePoint®, SugarSync, OneDrive (Windows only) and Dropbox.



### Easy to own and maintain

DR-F120 is easy to maintain because of its user-friendly design. The feed rollers are user-replaceable, which means you won’t incur the cost of calling out a service technician. Your costs stay low due to the scanner’s high energy-efficiency of less than 20W in operation.

# Specifications for imageFORMULA DR-F120

<b>GENERAL PRODUCT INFORMATION</b>	
Type	Desktop Type Flatbed Scanner with ADF
Scanning sensor unit	CMOS CIS 1 Line Sensor
Optical resolution	600dpi
Light source	RGB LED
Scanning side	Front / Back / Duplex
Interface	High speed USB 2.0
Dimensions (WxDxH)	Tray Closed : 469 (W) x 335 (D) x 120 (H) mm Tray Opened: 495 (W) x 335 (D) x 201 (H) mm
Weight	Approx. 4.6kg
Power requirements	AC220 - 240V (50/60Hz)
Power consumption	Scanning 19.9W or less, Sleep Mode 2.5W or less, Power Turned Off less than 0.5W
Operating environment	10 - 32.5 °C (50 - 90.5 °F), Humidity: 20 - 80% RH
Environmental compliance	RoHS and ENERGY STAR
<b>SCANNING SPECIFICATIONS</b>	
Scanning speed (A4, 200dpi)	
Black and White	ADF: 20ppm / 36ipm
Colour	ADF: 10ppm / 18ipm
Output resolution	150 x 150dpi, 200 x 200dpi, 240 x 240dpi, 300 x 300dpi, 400 x 400dpi, 600 x 600dpi
Output mode	Black & White, Error Diffusion, Advanced Text Enhancement, Advanced Text Enhancement II, 8-bit Greyscale (256-Level), 24-bit Colour
Suggested Daily Duty Cycle	Approx 800 scans/day

<b>DOCUMENT SPECIFICATIONS</b>	
Width	ADF: 51 - 216mm Flatbed: up to 216mm
Length	ADF: 89 - 356mm Flatbed: up to 356mm
Thickness	ADF: 35 - 128g/m <sup>2</sup> (0.05 - 0.15mm)
Long document mode	up to 1000mm
Card scanning	Width: 51mm Length: 89mm Thickness 128 - 209g/m <sup>2</sup>
Paper separation	Retard Roller Method
Feeder capacity	50 sheets (80g/m <sup>2</sup> )
<b>SPECIAL FEATURES</b>	
Automatic Page Size Detection, Deskew, Auto Colour Detection, Text Enhancement, Skip Blank Page, , Text Orientation, MultiStream, Preset Gamma Curve, Prescan, Edge Emphasis, Colour Dropout (RGB), Colour Enhancement (RGB), Moire Reduction, Character Emphasis, Prevent Bleed Through/ Remove Background, Remove Shadow, Border Removal, Erase Dot, Erase Notch, Punch Hole Removal, Apply corrections for photos, Double Feed Detection (By Length), Automatic Feeder/Flatbed detection, Rapid Recovery System	
<b>BUNDLED SOFTWARE</b>	
Windows	ISIS /TWAIN Driver (Windows XP/VISTA/7/8/ Server 2008/ Server 2012) CaptureOnTouch 3 EMC Captiva Cloud Runtime Controls
<b>CONSUMABLES</b>	
Exchange Roller Kit	
<b>ACCESSORIES</b>	
Silex SX-DS-4000U2	
Some images are simulated for clarity of reproduction. All data is based on Canon's standard testing methods. This leaflet and the specifications of the product have been developed prior to the date of product launch. Final specifications are subject to change without notice. ™ and ©, all company and / or product names/ logos are trademarks and / or registered trademarks of their respective manufacturers in their markets and / or countries.	



Canon Electronics Inc  
canon.com

Canon Europe  
canon-europe.com

English Edition  
© Canon Europa N.V.,  
2014

Canon (UK) Ltd  
Woodhatch, Reigate  
Surrey, RH2 8BF  
Tel: 01737 220000  
Fax: 01737 220022  
canon.co.uk

Canon Ireland  
3006 Lake Drive  
Citywest, Saggart  
Co.Dublin, Ireland  
Tel: 01 2052400  
Fax: 01 2052525  
canon.ie