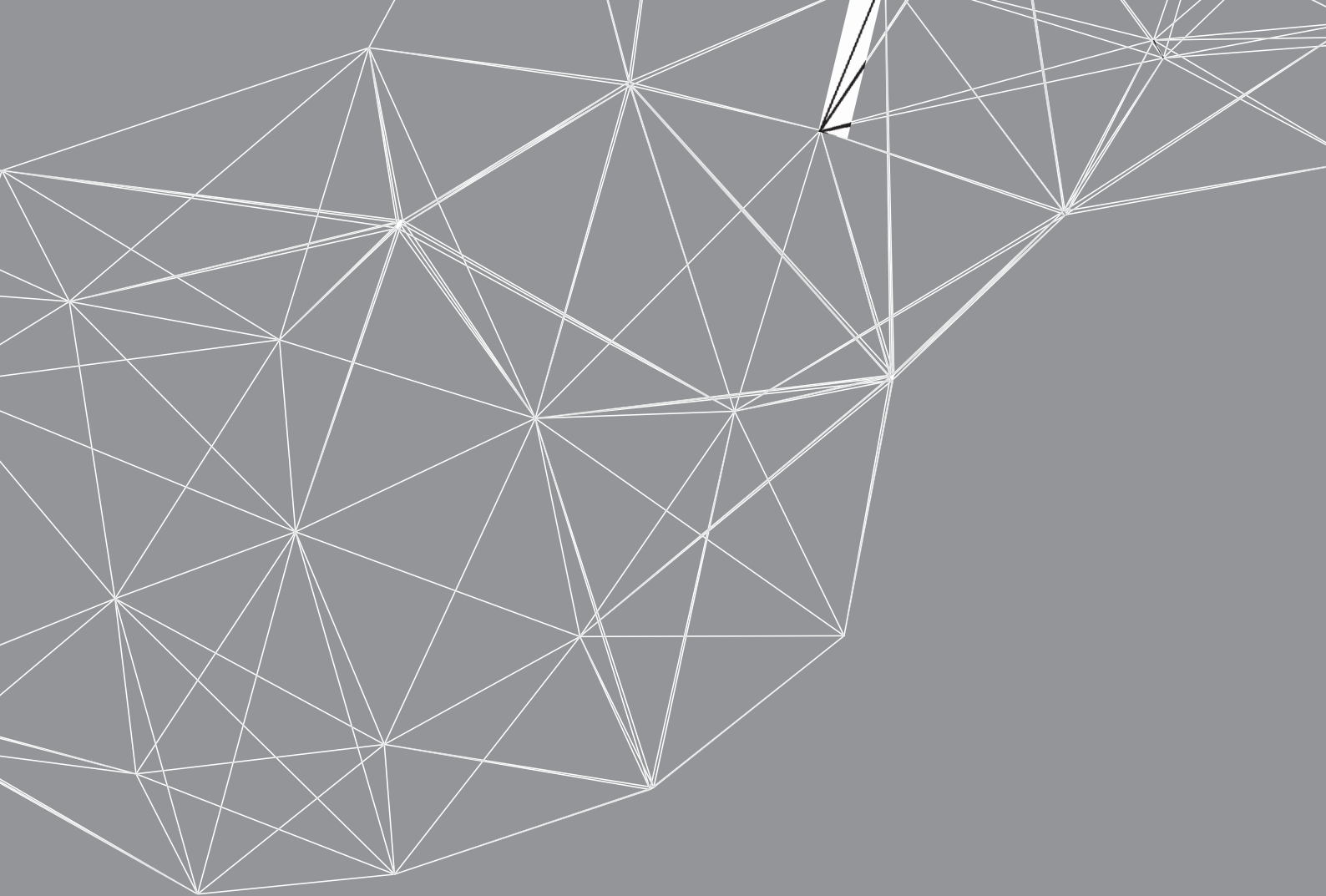




**F94**  
PERFORMANCE  
SEATING

 **hood**



**HOOD SEATING ARE  
PASSIONATE ABOUT  
YOUR HEALTH  
AND WELL-BEING.  
WE BRING YOU OUR  
UNIQUE ERGONOMIC  
AND INTUITIVE TASK  
SEATING RANGE.**

**F94**  
**PERFORMANCE  
SEATING**



**HOOD PHILOSOPHY**

**WE HAD A VISION...  
TO CREATE SIMPLE-TO-USE  
ERGONOMIC CHAIRS  
THAT WOULD FIT EVERYBODY,  
EVERYWHERE. RESOURCES ARE  
PRECIOUS, SO A SUSTAINABLE,  
LONG-LIFE DESIGN WAS  
ESSENTIAL WHILST OFFERING  
AFFORDABILITY FOR ALL.  
AT HOOD, WE DELIVER OUR  
RANGE OF UNIQUE CHAIRS  
QUICKLY TO OUR RESPECTED  
DEALER NETWORK WITH  
A PERSONAL SERVICE AND  
COMMITMENT TO LONG-TERM  
RELATIONSHIPS.**



**We all deserve to have our bodies supported correctly.  
Hood Seating encourages dynamic movement to improve  
our blood flow so we feel great and are focused to work.  
Hood delivers healthy, affordable seating for everyone.**

---

Where once ergonomics was about preventing or mitigating harm, it is now about helping people be more healthy, productive and active.

High-end seating manufacturers recognise the importance of muscle movement and engineer chairs to encourage people to shift position whilst seated. This movement stimulates the muscles; increases blood flow, relieves pressure points, and helps with concentration.

The mechanisms that enable this movement are no longer the exclusive domain of expensive chairs and can now be found throughout the Hood range. Healthy seating is no longer the luxury for the few but an affordable solution for everyone.

Comfortable employees typically work better; are happier and reduce the sick days an organisation can suffer. Hygiene, too, is improved by using modern materials such as mesh which offers ventilation and is easy to clean.

Our unique patented chairs have been designed so that every component can be removed and replaced to deliver extreme product longevity. Replacing damaged parts is good for our environment too.

**You can be confident your Hood chair will always deliver at peak performance and outstanding return on investment.**



**F94** PERFORMANCE SEATING

**ERGO-PERFORMANCE  
F94 IS THE CHAIR FOR EVERY  
SCENARIO; FOR EVERY  
WORKSPACE ENVIRONMENT.  
THE F94 HAS FOUR MODELS  
WITH THREE MECHANISM  
OPTIONS. SIMPLE AND  
INTUITIVE CONTROLS MEAN  
IT IS EASY TO ADJUST WITH  
MINIMAL TRAINING, HELPING  
EVERYONE TO ACTIVELY SIT  
PROPERLY. ALL GUARANTEED  
FOR 10 YEARS.**



**At Hood Seating, we are passionate that people adjust their chairs so they stay healthy.**

The F94's pictorial buttons make it easy to adjust height, seat-slide and tilt without user-training. Dynamic movement is essential to blood flow throughout the body and the direct tension control below the pictorial buttons adjusts to 'float' for all users weighing 8 to 23.5 stone.

Designed to encourage healthy seated posture, F94's integrated lumbar curvature offers superb lower back support with an extra lumbar panel to adjust perfectly within the 6 ratchet back positions. The shaped top of the back offers full thoracic support (upper back and shoulders) which is often a neglected area.

The F94 is built to last with a polished aluminium base as standard – it looks great too. 56 textile options are available, with leather or upholstered seat alternatives; two headrest options; foot rest and three arm styles mean you can design the F94 to be unique to you.

Some people prefer their chair to have no arms – arms can be removed easily leaving the design uncompromised and safe for users.

Another useful option is a coat hanger attachment to the back of the chair which keeps jackets uncrumpled and safely off the floor.



**F94** DESIGN YOUR PERFECT CHAIR

**SIT DOWN | STAND OUT**

**56 TEXTILE OPTIONS**

**2D, 3D & 4D ADJUSTABLE ARMS**

**3 MECHANISMS**

**2 HEADRESTS STYLES**

**MESH, FABRIC OR LEATHER**

**SEAT OPTIONAL COAT**

**HANGER OPTIONAL**

**INTEGRATED LEGREST**



## F94 FEATURES

### **ERGO-ENGINEERED**

**THE F94 RANGE IS PERFECT TO USE THROUGHOUT AN ORGANISATION FOR CONTINUITY OF AESTHETICS AND CORRECT FUNCTIONALITY WHERE REQUIRED: HOT DESKS TO 24/7 CONTROL ROOM; INJURED EMPLOYEES TO THE BOARD ROOM –THE F94 RANGE IS THE PERFECT SOLUTION. ONE CHAIR EVERYONE KNOWS HOW TO USE, LOOKS GREAT AND PERFORMS.**

## F94 AT A GLANCE

- Thoracic Support (upper back and shoulders)
- Integrated adjustable lumbar panel (removable)
- Ergonomic shaped back on ratchet
- Tension control in Dynamic Mode
- Waterfall seat for behind the knee comfort
- Fully adjustable arms
- Adjustable headrests
- Integrated footrest
- Pictorial buttons – simple and easy to adjust



## SERIES 100 101 102 103



MODEL	100	101	102	103
CODE	F94-521	F94-526A	F94-502	F94-501
MECHANISM	PADDLE	SYNCHRO	KNEE TILT BLACK	KNEE TILT BLACK/POLISHED
ADJUSTABLE LUMBAR	Y	Y	Y	Y
HEIGHT-ADJUSTABLE RATCHET BACK	Y	Y	Y	Y
SEAT SLIDE	-	Y	Y	Y
POLISHED ALUMINIUM BASE	Y	Y	Y	Y
ADJUSTABLE ARMS	2D	3D	3D	4D
FREE UK DELIVERY	Y	Y	Y	Y
<b>OPTIONS</b>				
FABRIC SEAT	Y	Y	Y	Y
LEATHER SEAT	Y	Y	Y	Y
ERGONOMIC HEADREST	Y	Y	Y	Y
EXECUTIVE HEADREST	Y	Y	Y	Y
INTEGRATED LEGREST	-	Y	Y	Y
COAT HANGER	Y	Y	Y	Y

# SERIES 100



A great value chair offering superb support and ergonomics for any office environment.

## FEATURES

- A** Optional headrests with height and angle adjustment (can be retro-fitted).
- B** Upper back designed for great thoracic support.
- C** Height adjustable (5 settings) backrest.
- D** Integrated lumbar supporting lower back. Removable height-adjustable Lumbar Panel.
- E** Robust soft-weave mesh upholstery for ventilation and pressure distributions.
- F** Single paddle level control to activate seat height and dynamic movement.
- G** Tension control.
- H** Synchronised mechanism at 2:1 ratio. Seat depth can be built in two positions.
- I** Rounded waterfall seat front.
- J** Multifunctional arm rests with soft touch pads (Arms can be removed).
- K** Aluminium five-star base as standard.

## OPTIONS

- White frame.
- Integrated legrest.
- Coat hanger.
- Mesh or foam upholstery for seat.
- Ergonomic (height & angle) or wider executive (height-adjustable) headrests.

## SERIES 101



With seat slide functionality and intuitive controls, the 101 Series offers an enhanced task seating experience.

### FEATURES

- A** Optional headrests with height and angle adjustment (can be retro-fitted).
- B** Upper back designed for great thoracic support.
- C** Height adjustable (5 settings) backrest.
- D** Integrated lumbar supporting lower back. Removable height-adjustable Lumbar Panel.
- E** Robust soft-weave mesh upholstery for ventilation and pressure distributions.
- F** Intuitive, pictorial three lever control to activate seat height, seat slide and dynamic movement.
- G** Extendable direct tension control.
- H** Synchronised mechanism at 2:1 ratio.
- I** Rounded waterfall seat front.
- J** 3D Multifunctional (height, depth, angle) arm rests with soft touch pads.
- K** Aluminium five-star base as standard.

### OPTIONS

- White frame.
- Integrated legrest.
- Coat hanger.
- Mesh or foam upholstery for seat.
- Ergonomic (height & angle) or wider executive (height-adjustable) headrests.
- Arm width can be set during build. (Arms can be removed).

CERTIFIED 5459  
BS 5459-2:2000+A2:2008

Specification for performance requirements and tests for office furniture. Office pedestal seating for use by persons weighing up to 150kg and for use up to 24 hours a day

# SERIES 102



The 102's knee-tilt mech delivers infinite tilt-lock positions and its larger seat offers addition seating support.

## FEATURES

- A** Optional headrest with height and angle adjustment (can be easily retro-fitted). Exec shown.
- B** Upper back designed for great thoracic support.
- C** Height adjustable (5 settings) backrest.
- D** Integrated lumbar supporting lower back. Removable height-adjustable Lumbar Panel.
- E** Robust soft-weave mesh upholstery for ventilation and pressure distributions.
- F** Intuitive, pictorial three lever control to activate seat height, seat slide and dynamic movement.
- G** Extendable direct tension control.
- H** Dual pivot knee-tilt mechanism in black metal finish.
- I** Larger seat pan for extra comfort as standard. Rounded waterfall seat front
- J** 3D Multifunctional (height, depth, angle) arm rests with soft touch pads.
- K** Aluminium five-star base as standard.

## OPTIONS

- White frame.
- Integrated legrest.
- Coat hanger.
- Mesh or foam upholstery for seat.
- Ergonomic (height & angle) or wider executive (height-adjustable) headrests.

CERTIFIED 5459

BS 5459-2:2000+A2:2008

Specification for performance requirements and tests for office furniture. Office pedestal seating for use by persons weighing up to 150kg and for use up to 24 hours a day

## SERIES 103



With aluminium 4 dimensional armrests as standard attaching to an alloy mech, the 103 is the most elegant of the F94 range.

### FEATURES

- A** Optional headrests with height and angle adjustment (can be retro-fitted).
- B** Upper back designed for great thoracic support.
- C** Height adjustable (5 settings) backrest.
- D** Integrated lumbar supporting lower back. Removable height-adjustable Lumbar Panel.
- E** Robust soft-weave mesh upholstery for ventilation and pressure distributions.
- F** Intuitive, pictorial three lever control to activate seat height, seat slide and dynamic movement.
- G** Extendable direct tension control.
- H** Dual pivot knee-tilt mechanism in aluminium finish.
- I** Larger seat pad for enhanced comfort as standard with rounded waterfall seat front
- J** Multifunctional lockable armrests (height, depth, angle, width\*) with soft touch pads. (Arms can be removed). \*On 4D option.
- K** Aluminium five-star base as standard.

### OPTIONS

- White frame.
- Integrated legrest.
- Coat hanger.
- Mesh or foam upholstery for seat.
- Ergonomic (height & angle) or wider executive (height-adjustable) headrests.

CERTIFIED 5459

BS 5459-2:2000+A2:2008

Specification for performance requirements and tests for office furniture. Office pedestal seating for use by persons weighing up to 150kg and for use up to 24 hours a day

# F94 SPEC

## MODELS



**100 SERIES**  
WITHOUT HEADREST  
Shown with mesh seat  
and 2D arms



**101 SERIES**  
WITH EXECUTIVE HEADREST  
Shown with mesh seat  
and 3D arms



**102 SERIES**  
WITH ERGONOMIC HEADREST  
Shown with mesh seat  
and 3D arms



**103 SERIES**  
WITH EXECUTIVE HEADREST  
Shown with fabric seat  
and 4D arms

## OPTIONS



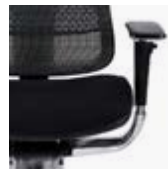
**ERGONOMIC HEADREST**



**EXECUTIVE HEADREST**



**MESH SEAT**



**UPHOLSTERED CUSHION SEAT**



**COAT HANGER**  
Retro-fittable



**WHITE FRAME**



**2D ARMREST**



**3D ARMREST**



**4D ARMREST**

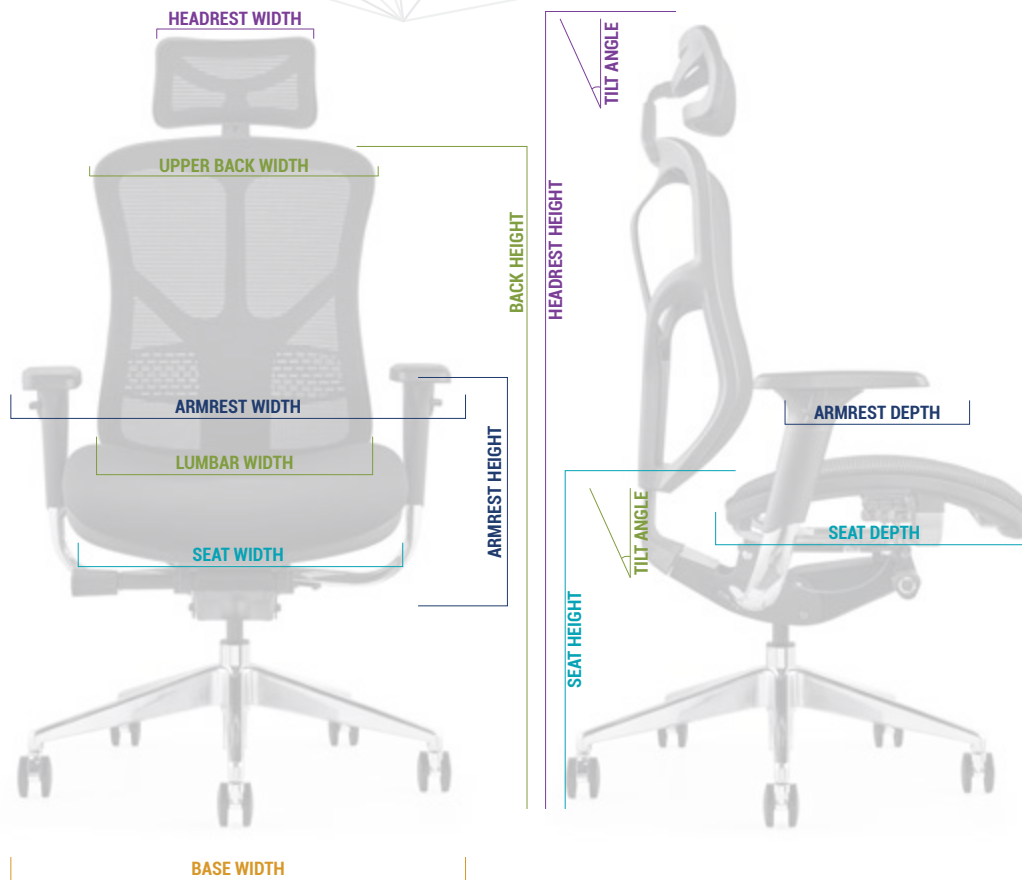


**INTEGRATED LEGREST**



**OTTOMAN LEGREST**

# F94 DIMENSIONS



DESIGNED TO ADJUST TO MOST ANTHROPOMETRIC MEASUREMENTS  
 Sizes are based on F94 103 series with mesh seat.

## ERGONOMIC HEADREST DIMENSIONS

WIDTH	270 mm
HEIGHT ADJUSTMENT	90-130 mm
ANGLE	40 °

## EXECUTIVE HEADREST DIMENSIONS

WIDTH	400 mm
HEIGHT	185-220 mm

## SEAT DIMENSIONS

F94 100 ONLY - STANDARD HEIGHT ADJUSTMENT	390-460 mm
STANDARD HEIGHT ADJUSTMENT	440-530 mm
OPTIONAL TALL STEM HEIGHT ADJUSTMENT	480-570 mm
WIDTH F94 100	480 mm
WIDTH F94 101	500 mm
WIDTH F94 102, 103	500 mm
DEPTH F94 100	490 mm
DEPTH F94 101	500 mm
DEPTH F95 102, 103	530 mm

## BASE DIMENSIONS

DIAMETER ø	700 mm
------------	--------

## BACK DIMENSIONS

UPPER BACK WIDTH	470 mm
LUMBAR WIDTH	440 mm
LUMBAR PANEL HEIGHT ADJUSTMENT	20 mm
HEIGHT (5 SETTINGS)	580-640 mm
ANGLE	

## 2D ARMREST DIMENSIONS

HEIGHT ADJUSTABLE (6 SETTINGS)	150-230 mm
ANGLE	40-45 °

## 3D ARMREST DIMENSIONS

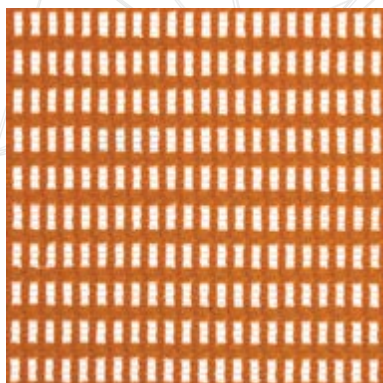
DEPTH	270-320 mm
HEIGHT ADJUSTABLE (6 SETTINGS)	150-230 mm
HEIGHT (LOWEST TO HIGHEST)	650-720 mm
ANGLE	40 °

## 4D ARMREST DIMENSIONS

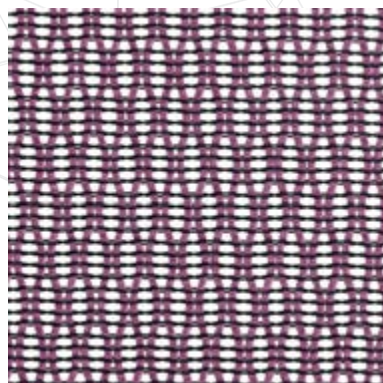
WIDTH	460-520 mm
DEPTH	270-320 mm
HEIGHT ADJUSTABLE (6 SETTINGS)	150-230 mm
ANGLE	40 °

# F94 TEXTILES

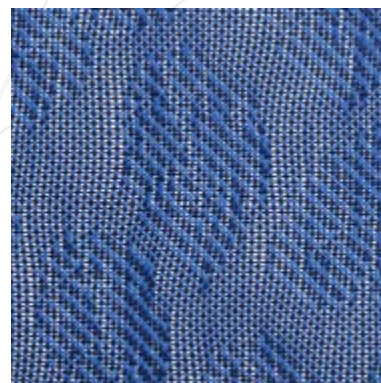
We have selected a range of durable and contemporary textiles from a selection of patterned meshes to luxurious leather and soft fabric.



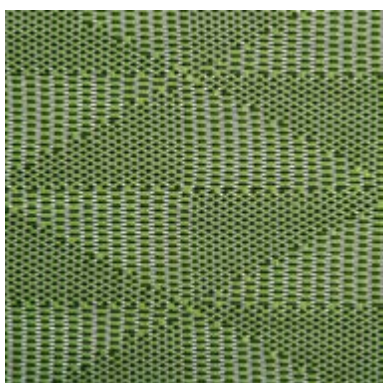
SOFT WEAVE MESH



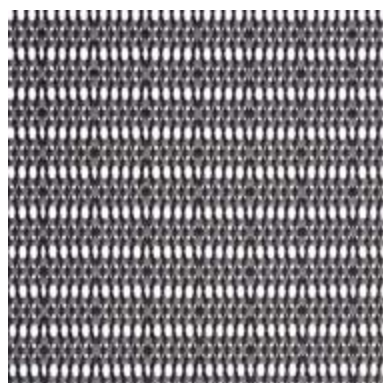
DIAMOND MESH



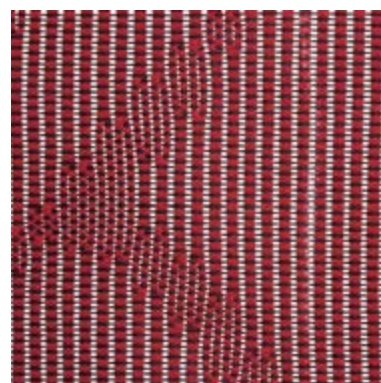
LEAF MESH



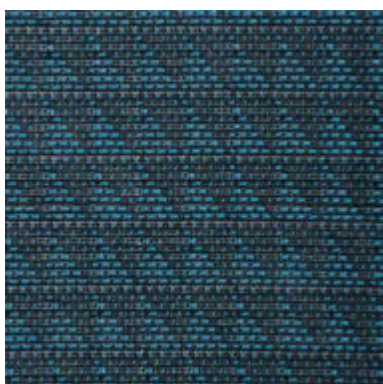
KITE MESH



STRIPE MESH



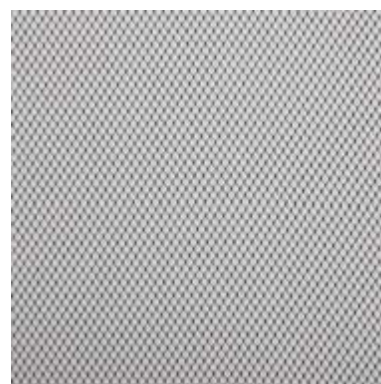
JUNGLE MESH



TRIANGLE MESH



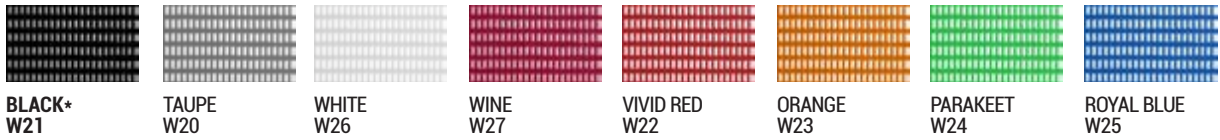
LEATHER



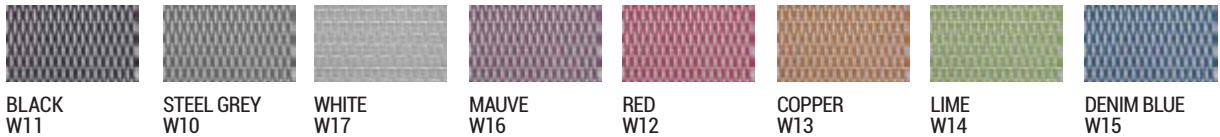
FABRIC

F94 comes in a range of textile colours and a choice of frame and base finishes to allow you to personalise your chair.

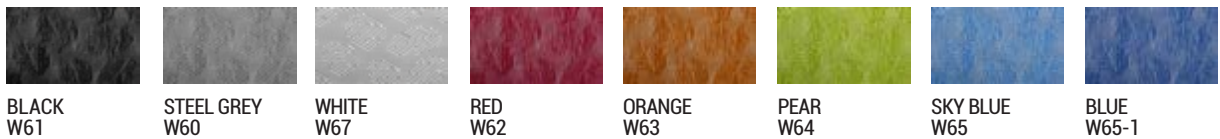
### SOFT WEAVE MESH



### DIAMOND MESH



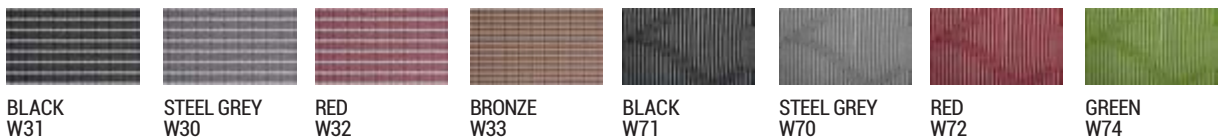
### LEAF MESH



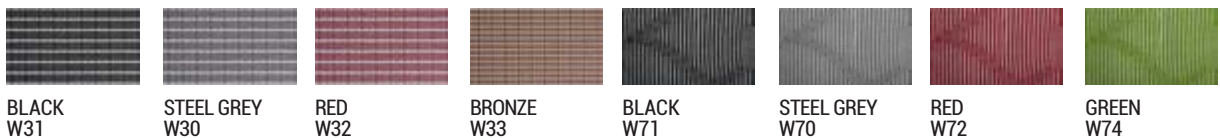
### KITE MESH



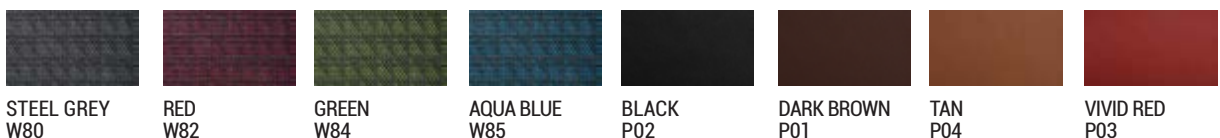
### STRIPE MESH



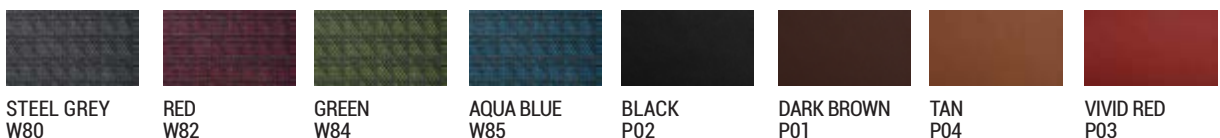
### JUNGLE MESH



### TRIANGLE MESH



### LEATHER



### FABRIC



Colours may not be exact due to print processes. Please speak to your Hood Seating representative for upholstery samples.



**HEAD OFFICE:**

The Smart Centre,  
Tenth Avenue,  
Zone 3 Deeside Industrial Park,  
Flintshire, CH5 2UA

**T: 0333 123 2000**  
**E: [SALES@HOODSEATING.COM](mailto:SALES@HOODSEATING.COM)**