



C19
PERFORMANCE
SEATING

 **hood**



**HOOD SEATING ARE
PASSIONATE ABOUT
YOUR HEALTH
AND WELL-BEING.
WE BRING YOU OUR
UNIQUE ERGONOMIC
AND INTUITIVE TASK
SEATING RANGE.**

C19
**PERFORMANCE
SEATING**



HOOD PHILOSOPHY

**WE HAD A VISION...
TO CREATE SIMPLE-TO-USE
ERGONOMIC CHAIRS
THAT WOULD FIT EVERYBODY,
EVERYWHERE. RESOURCES ARE
PRECIOUS, SO A SUSTAINABLE,
LONG-LIFE DESIGN WAS
ESSENTIAL WHILST OFFERING
AFFORDABILITY FOR ALL.
AT HOOD, WE DELIVER OUR
RANGE OF UNIQUE CHAIRS
QUICKLY TO OUR RESPECTED
DEALER NETWORK WITH
A PERSONAL SERVICE AND
COMMITMENT TO LONG-TERM
RELATIONSHIPS.**



We all deserve to have our bodies supported correctly. Hood Seating encourages dynamic movement to improve our blood flow so we feel great and are focused to work. Hood delivers healthy, affordable seating for everyone.

Where once ergonomics was about preventing or mitigating harm, it is now about helping people be more healthy, productive and active.

High-end seating manufacturers recognise the importance of muscle movement and engineer chairs to encourage people to shift position whilst seated. This movement stimulates the muscles; increases blood flow, relieves pressure points, and helps with concentration.

The mechanisms that enable this movement are no longer the exclusive domain of expensive chairs and can now be found throughout the Hood range. Healthy seating is no longer the luxury for the few but an affordable solution for everyone.

Comfortable employees typically work better; are happier and reduce the sick days an organisation can suffer. Hygiene, too, is improved by using modern materials such as mesh which offers ventilation and is easy to clean.

Our unique patented chairs have been designed so that every component can be removed and replaced to deliver extreme product longevity. Replacing damaged parts is good for our environment too.

You can be confident your Hood chair will always deliver at peak performance and outstanding return on investment.



C19 PERFORMANCE SEATING

**ERGO-PERFORMANCE
C19 IS THE ULTIMATE
TASK CHAIR; FOR EVERY
WORKSPACE ENVIRONMENT.
THE C19 IS ONE CHAIR -
WITH A CHOICE OF FINISHES.
SIMPLE AND INTUITIVE
CONTROLS MEAN IT IS EASY
TO ADJUST WITH MINIMAL
TRAINING, HELPING
EVERYONE TO ACTIVELY SIT
PROPERLY. ALL GUARANTEED
FOR 5 YEARS.**



At Hood Seating, we are passionate about helping people maintain their well-being through comfortable seating solutions.

In our ongoing commitment to delivering what our customers need, we conducted extensive market research to identify opportunities for improvement. The feedback from our dealers highlighted the demand for a high-quality, stylish contract chair that offers excellent value for money. We embarked on a journey to create a cutting-edge seating solution that aligns perfectly with our customers' requirements. Introducing the result: the all-new C19 Task Chair.

The C19 Task Chair exemplifies our dedication to ergonomic excellence, user-friendly design, and contemporary aesthetics. We have crafted a chair that excels in comfort, functionality, and design. This has been achieved while maintaining an attractive price point that positions the C19 as a competitive option in the marketplace.

Standard features of the C19 Task Chair include a breathable mesh back, seat slide and a comfortable upholstered seat pad. Its sleek and modern aesthetics, coupled with intuitive ergonomic functionality, ensure that the C19 stands out. The C19 boasts an intuitive mechanism with user-friendly controls conveniently

located on the right-hand side. These allow for easy adjustments of seat height, seat depth and dynamic movement. Promoting healthy blood circulation throughout the body, the direct tension control beneath the seat ensures a balanced and comfortable experience for all users.

To support proper posture and provide excellent lumbar support, the C19 features an easily adjustable lumbar panel. Furthermore, the chair's 3D arms, complete with soft-touch pads, can be effortlessly removed without compromising its design, ensuring a safe experience for users.

Built to last, the C19 comes equipped with interchangeable parts, guaranteeing a long-lasting investment. Additionally, for those seeking more customisation, we offer a mesh seat option and a choice of 56 different textiles, subject to lead times. This enables each customer to tailor the chair to their specific needs and style preferences.

Discover the perfect seating solution with C19 where comfort, design, and value converge seamlessly.



C19 DESIGN YOUR PERFECT CHAIR

SIT DOWN | STAND OUT
56 TEXTILE OPTIONS
MESH, FABRIC OR LEATHER

C19



A great value contract chair offering superb support and ergonomics for any office environment.

FEATURES

- A** Great thoracic support.
- B** Flexible backrest.
- C** Height adjustable lumbar support.
- D** New seat slide feature.
- E** Direct tension control.
- F** Synchro mechanism at 2:1 ratio.
- G** Rounded waterfall seat front.
- H** 3D adjustable arm rests with soft touch pads.
- I** Black nylon five-star base as standard.

OPTIONS

Polished Aluminium Base
Black Aluminium Base
Leather Seat pad

Mesh seat subject to lead times.

CERTIFIED 5459
BS 5459-2:2000+A2:2008

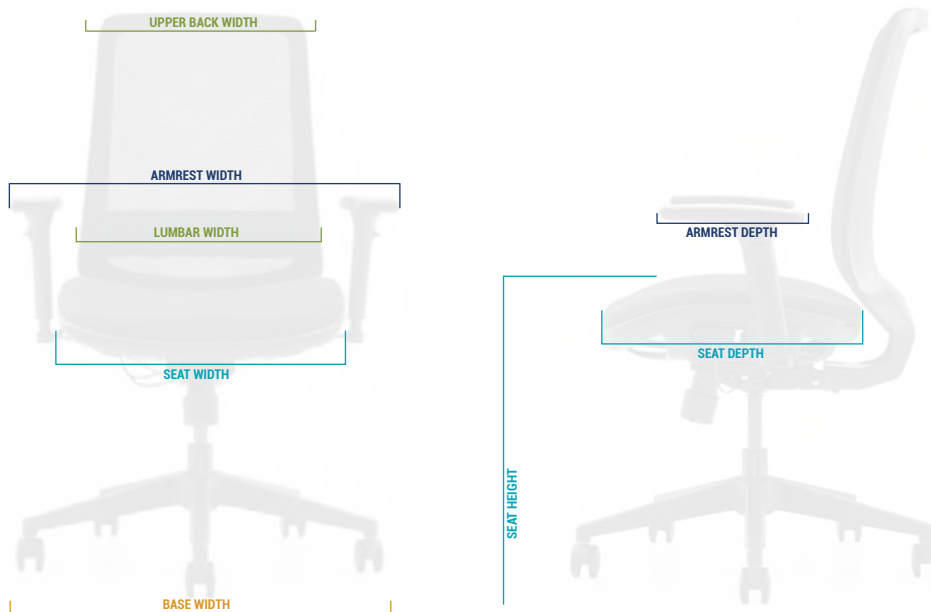
Specification for performance requirements and tests for office furniture. Office pedestal seating for use by persons weighing up to 150kg and for use up to 24 hours a day

C19 FEATURES

ERGO-ENGINEERED

THE C19 RANGE IS PERFECT TO USE THROUGHOUT AN ORGANISATION FOR CONTINUITY OF AESTHETICS AND CORRECT FUNCTIONALITY WHERE REQUIRED: HOT DESKS TO THE BOARD ROOM –THE C19 RANGE IS THE PERFECT SOLUTION. ONE CHAIR EVERYONE KNOWS HOW TO USE, LOOKS GREAT AND PERFORMS.

C19 DIMENSIONS



BACK DIMENSIONS

UPPER BACK WIDTH	400	mm
LUMBAR WIDTH	460	mm
LUMBAR HEIGHT	90-160	mm
HEIGHT	560	mm
ANGLE	45	°

SEAT DIMENSIONS

STANDARD HEIGHT ADJUSTMENT	440-530	mm
OPTIONAL TALL STEM HEIGHT ADJUSTMENT	480-570	mm
WIDTH	510	mm
DEPTH	490-550	mm

3D ARMREST DIMENSIONS

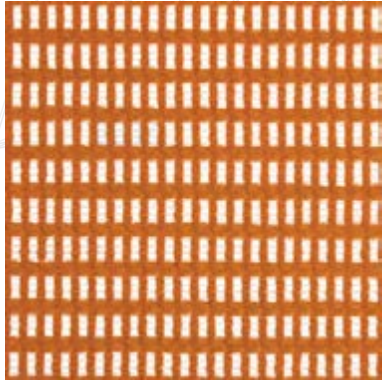
WIDTH	270-320	mm
DEPTH	250-300	mm
HEIGHT ADJUSTABLE (6 SETTINGS)	190-240	mm
ANGLE	40	°

BASE DIMENSIONS

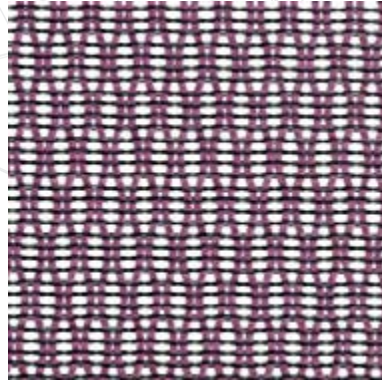
DIAMETER Ø	700	mm
------------	-----	----

C19 TEXTILES

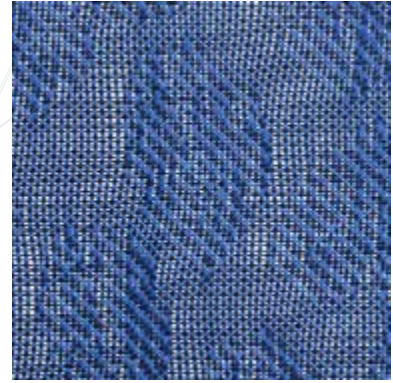
We have selected a range of durable and contemporary textiles from a selection of patterned meshes to luxurious leather and soft fabric.



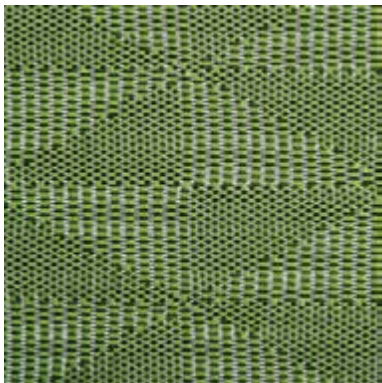
SOFT WEAVE MESH



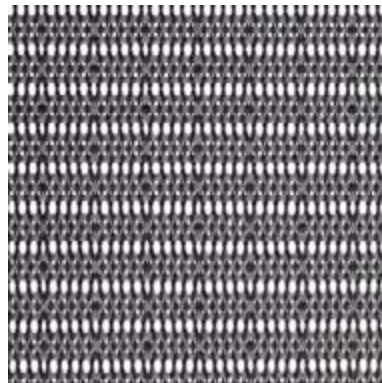
DIAMOND MESH



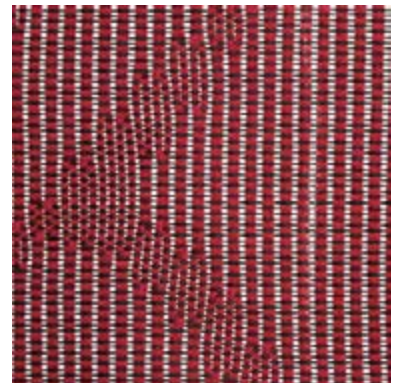
LEAF MESH



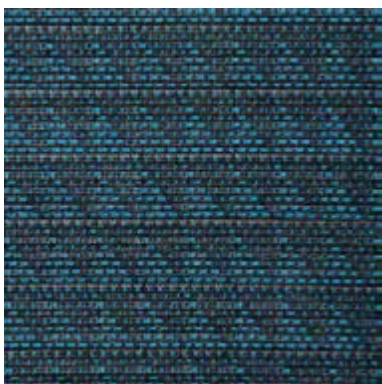
KITE MESH



STRIPE MESH



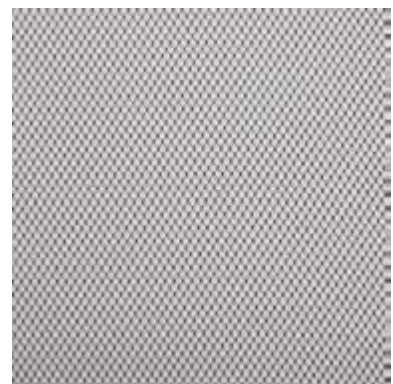
JUNGLE MESH



TRIANGLE MESH



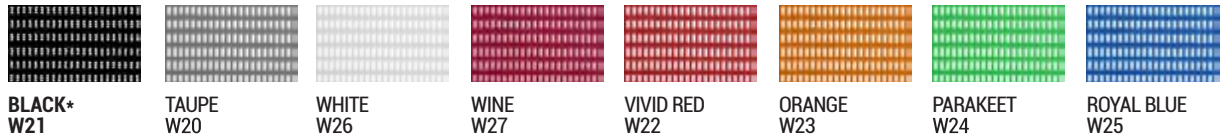
LEATHER



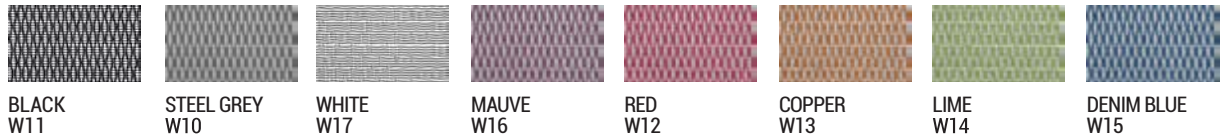
FABRIC

F94 comes in a range of textile colours and a choice of frame and base finishes to allow you to personalise your chair.

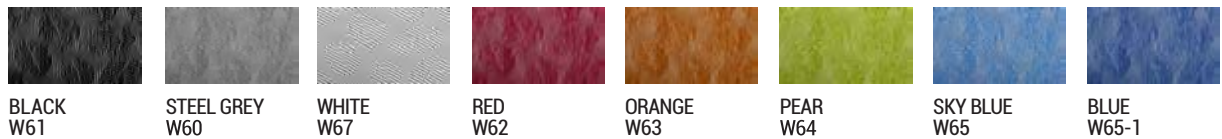
SOFT WEAVE MESH



DIAMOND MESH



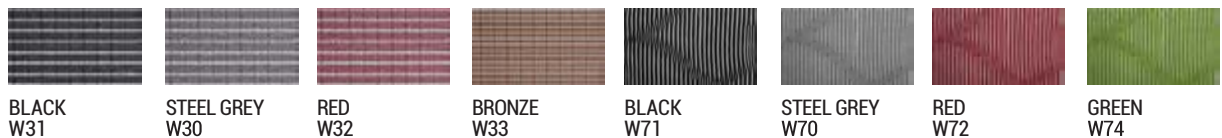
LEAF MESH



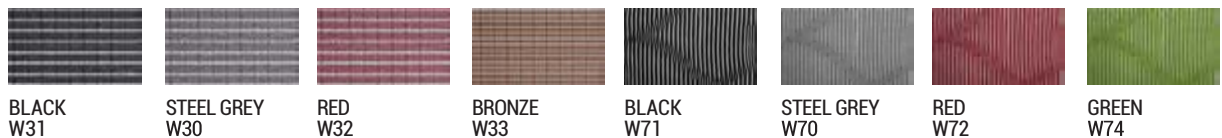
KITE MESH



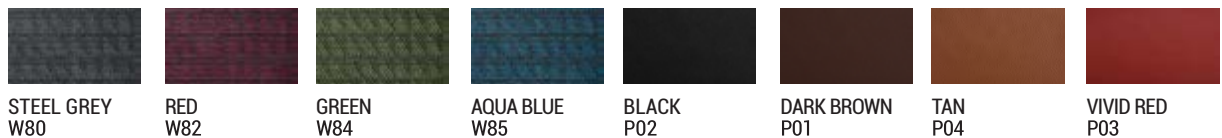
STRIPE MESH



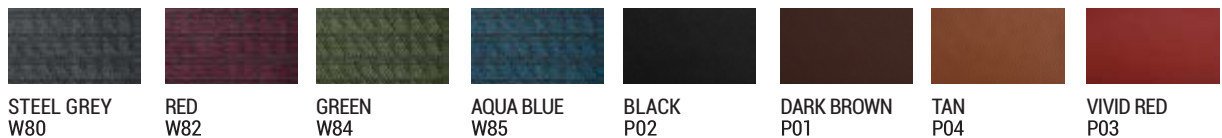
JUNGLE MESH



TRIANGLE MESH



LEATHER



FABRIC



Colours may not be exact due to print processes. Please speak to your Hood Seating representative for upholstery samples.



HEAD OFFICE:

The Smart Centre,
Tenth Avenue,
Zone 3 Deeside Industrial Park,
Flintshire, CH5 2UA

T: 0333 123 2000
E: SALES@HOODSEATING.COM