



**SEALS THAT
PUT THE
WATCH IN
WATCHDOG.
WE CAN
SUPPLY THAT.**

GLOBAL INDUSTRIAL™
SECURITY SEALS



GLOBALINDUSTRIAL.COM
1-888-645-1232

PLASTIC TRUCK SEAL

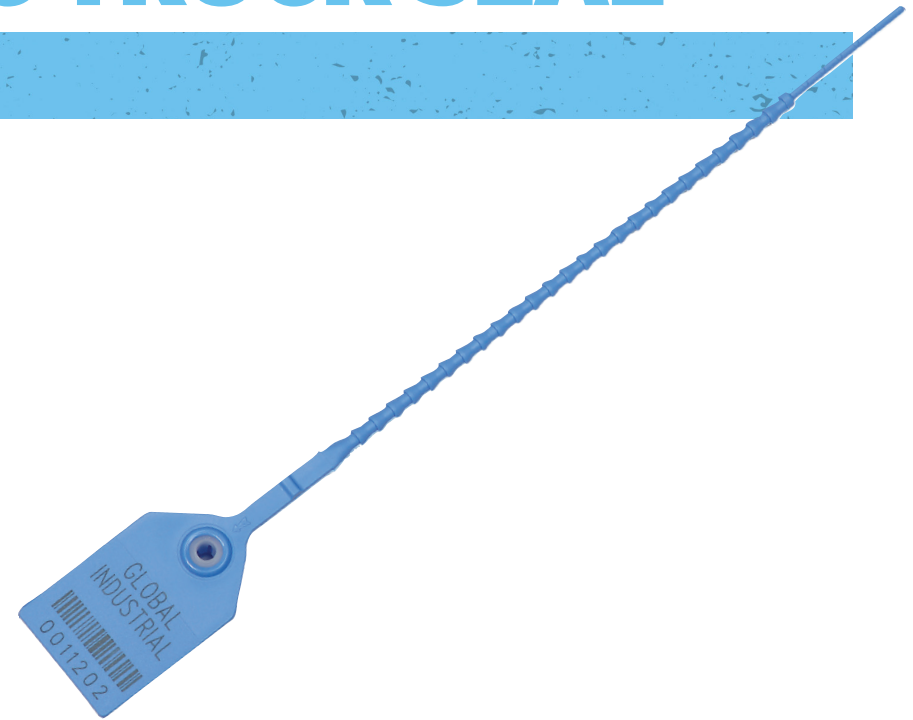


MODEL #	LENGTH	COLOR	BREAKING STRENGTH
670477WH	7-1/2"	White	60 lbs.
670477BK	7-1/2"	Black	60 lbs.
670477RD	7-1/2"	Red	60 lbs.
670477OR	7-1/2"	Orange	60 lbs.
670477YL	7-1/2"	Yellow	60 lbs.
670477BL	7-1/2"	Blue	60 lbs.
670477GN	7-1/2"	Green	60 lbs.
670478WH	7-1/2"	White	40 lbs.
670478BK	7-1/2"	Black	40 lbs.
670478RD	7-1/2"	Red	40 lbs.
670478OR	7-1/2"	Orange	40 lbs.
670478YL	7-1/2"	Yellow	40 lbs.
670478BL	7-1/2"	Blue	40 lbs.
670478GN	7-1/2"	Green	40 lbs.

This extremely versatile, fixed length truck seal is compact, tamper resistant, and user-friendly. Suitable for truck doors, drums, containers, gates, and more. Available in both 40 lb. and 60 lb. breaking strengths.

ADJUSTABLE PLASTIC TRUCK SEAL

MODEL #	LENGTH	COLOR	BREAKING STRENGTH
670479WH	9"	White	50-55 lbs.
670479BK	9"	Black	50-55 lbs.
670479RD	9"	Red	50-55 lbs.
670479OR	9"	Orange	50-55 lbs.
670479YL	9"	Yellow	50-55 lbs.
670479BL	9"	Blue	50-55 lbs.
670479GN	9"	Green	50-55 lbs.
670480WH	12"	White	50-55 lbs.
670480BK	12"	Black	50-55 lbs.
670480RD	12"	Red	50-55 lbs.
670480OR	12"	Orange	50-55 lbs.
670480YL	12"	Yellow	50-55 lbs.
670480BL	12"	Blue	50-55 lbs.
670480GN	12"	Green	50-55 lbs.
670481WH	15"	White	50-55 lbs.
670481BK	15"	Black	50-55 lbs.
670481RD	15"	Red	50-55 lbs.
670481OR	15"	Orange	50-55 lbs.
670481YL	15"	Yellow	50-55 lbs.
670481BL	15"	Blue	50-55 lbs.
670481GN	15"	Green	50-55 lbs.
670482WH	18"	White	50-55 lbs.
670482BK	18"	Black	50-55 lbs.
670482RD	18"	Red	50-55 lbs.
670482OR	18"	Orange	50-55 lbs.
670482YL	18"	Yellow	50-55 lbs.
670482BL	18"	Blue	50-55 lbs.
670482GN	18"	Green	50-55 lbs.



This robust, adjustable length seal with notched or beaded tail is suitable for a wide range of applications. It's designed with a thinner tail diameter, offering surprising strength and performance capability. Available in a variety of lengths, including 9", 12", 15", and 18".

ADJUSTABLE EXTINGUISHER TAMPER SEAL



MODEL #	LENGTH	COLOR
670483WH	9"	White
670483BK	9"	Black
670483RD	9"	Red
670483OR	9"	Orange
670483YL	9"	Yellow
670483BL	9"	Blue
670483GN	9"	Green

This seal is fit-for-purpose, compact, and easy to use. It's designed to break easily for quick access or emergencies, and is frequently used on fire extinguishers and life-saving equipment.

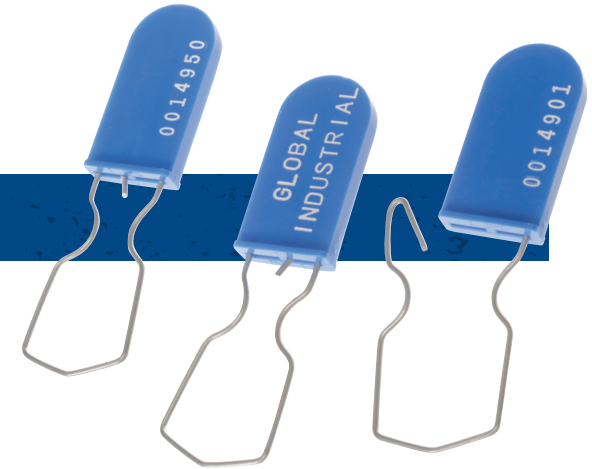
ONE-PIECE PADLOCK SEAL



MODEL #	COLOR
670484WH	White
670484BK	Black
670484RD	Red
670484OR	Orange
670484YL	Yellow
670484BL	Blue
670484GN	Green

This one-piece plastic seal is compact and user-friendly. Its flat profile makes it ideal for sealing doors, gates, storage cabinets, and first aid boxes, as well as airline or passenger rail catering carts.

WIRE HASP PADLOCK SEAL



MODEL #	COLOR	BREAKING STRENGTH
670485RD	Red	100 lbs.
670485BL	Blue	100 lbs.
670485GN	Green	100 lbs.
670485BK	Black	100 lbs.
670485YL	Yellow	100 lbs.
670485OR	Orange	100 lbs.

This padlock seal is robustly-designed to meet a 100 lb. breaking strength. It can be used on drums, gates, doors, and canisters, but must be removed with a cable cutter.

HIGH SECURITY BOLT SEAL

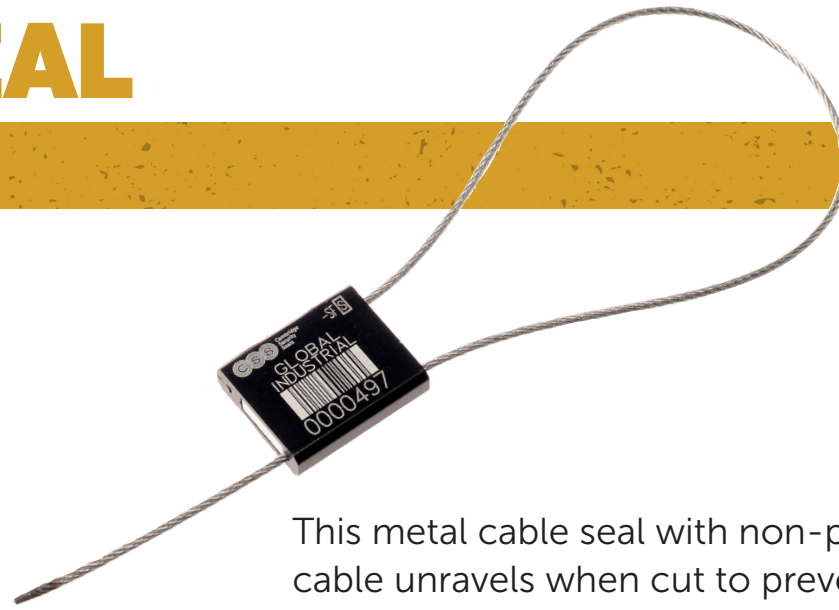


MODEL #	COLOR	BREAKING STRENGTH
670487YL	Yellow	3747 lbs.
670487WH	White	3747 lbs.
670487OR	Orange	3747 lbs.
670487RD	Red	3747 lbs.
670487BL	Blue	3747 lbs.
670487GN	Green	3747 lbs.

This high security bolt seal is ISO 17712 certified and meets C-TPAT requirements. It is designed for safeguarding high value cargo, such as shipping containers, trucks, and rail cars.

METAL CABLE SEAL

MODEL #	SIZE (W x L)	COLOR
670488RD	1/16" x 12"	Red
670488BL	1/16" x 12"	Blue
670488BK	1/16" x 12"	Black
670488GN	1/16" x 12"	Green
670489RD	1/16" x 24"	Red
670489BL	1/16" x 24"	Blue
670489BK	1/16" x 24"	Black
670489GN	1/16" x 24"	Green
670490RD	1/8" x 12"	Red
670490BL	1/8" x 12"	Blue
670490BK	1/8" x 12"	Black
670490GN	1/8" x 12"	Green
670491RD	1/8" x 24"	Red
670491BL	1/8" x 24"	Blue
670491BK	1/8" x 24"	Black
670491GN	1/8" x 24"	Green



This metal cable seal with non-preformed cable unravels when cut to prevent resealing and unwanted tampering. Ideal for trucks, containers, drums, rail cars, high value totes, and canisters.

METAL TRUCK SEAL

MODEL #	COLOR
670486SL	Silver



This tin-plated metal truck seal is easy to install and popular for gates, doors, and drums. It fits through extremely thin slots or apertures, making it highly versatile.