

GALAXY[®] GX2 Automated Test System

SIMPLICITY COUNTS

MSA's New GALAXY GX2 Automated Test System / Advanced Safety Management . . . Effortless Operation

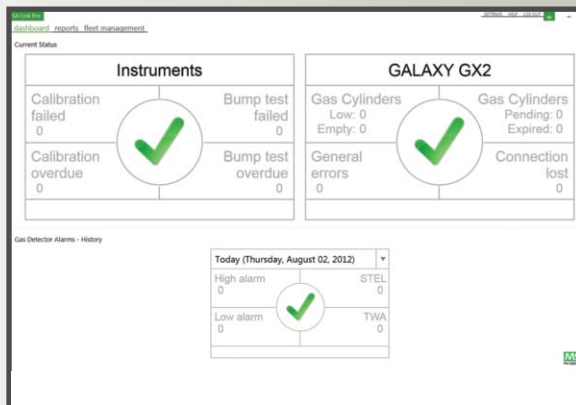


Advanced MSA Link Pro Software

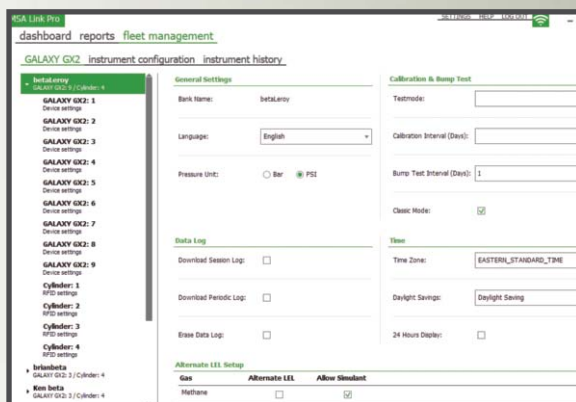
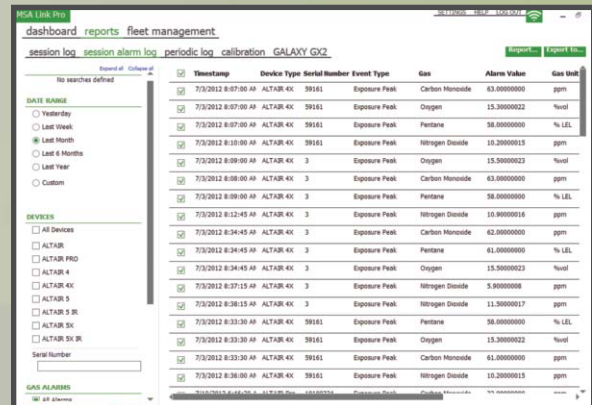
Analyze All Data, Any Time

MSA Link Pro Software lets you easily and proactively manage your gas detection fleet. Program offers efficient setup and configuration with dashboard alerts as to all conditions, as well as calibration gas and expiration warnings. Query data, print or save reports including gas exposures incidents; system can be set up to automatically send email exposure alerts. Generate session logs, including periodic as well as calibration and GALAXY GX2 System bank data. Program sends scheduled emails from master test stand based upon detector conditions and events. Directly input your data and filter results live.

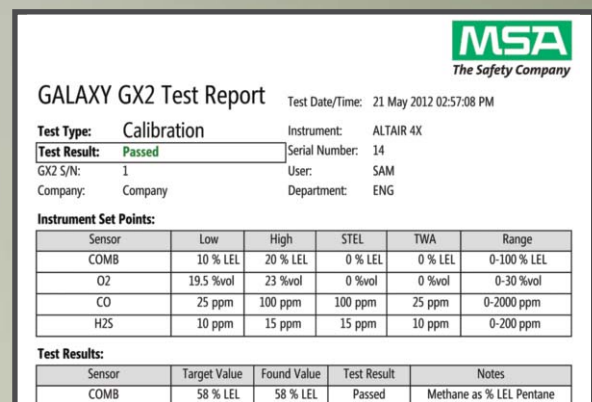
View test and exposure data, session and periodic logs at a glance. Dashboard displays live status of GALAXY System test stand banks.



Live filtering can be viewed, printed and saved as PDF document.



System offers direct data input, live filtering, test and exposure queries, and detailed reports.



Print and save detailed calibration, bump test and exposure reports.

SIMPLICITY COUNTS

The new **GALAXY GX2 Automated Test System** provides simple and intelligent testing and calibration of ALTAIR PRO Single-Gas Detectors, as well as ALTAIR 4X and ALTAIR 5X Multigas Detectors, driven by the MSA XCell® Sensors technology available in any portable gas detector: MSA XCell® Sensors.

This easy-to-use automated test stand offers high performance as either a stand-alone unit or an integrated portable detector management system, enabling total data access and control of MSA's ALTAIR Gas Detector fleet. Once any ALTAIR Family Gas Detector is placed within the GALAXY GX2 System, it can be tested, calibrated and charged automatically.* Flexibility allows for up to 10 test stations, four cylinder holders and multi-unit charger within one GALAXY GX2 System detector bank.

** Contact your local sales representative regarding availability.*



Ease of Use

Calibrate & Test Effortlessly

- Easy setup, simple use with touch-free testing.
- Color touch screen enhances user experience at the test stand.
- Can be used with a PC or as a stand-alone system, the perfect solution for large fleet end users, as well as for smaller applications.
- Automated test system and MSA Link™ Software (transfers portable gas detector records to a connected PC) provided as standard in many commonly spoken languages.
- Your ALTAIR 4X and ALTAIR 5X Multigas Detectors are always ready for use.* If you're faced with an urgent, short-notice situation, these units are ready for deployment, ideal for emergency applications.

Cost of Ownership

Save Time, Save Gas & Save Money

- Exceeds 50% reduction in cost of ownership, including calibration gas expenses when combined with high-performance MSA XCell Sensors.
- Faster total testing of ALTAIR Family Gas Detectors.
- Test up to 10 gas detectors simultaneously in the time most competitive systems take to test one device.
- RFID-tagged calibration gas cylinders to help ensure use of correct gas.

Proactive Safety

Command, Control & Communicate

- With MSA Link Pro, you can manage safety by receiving real-time information and notifications for bump tests.
- Calibration gas analysis provided by the GALAXY GX2 via advanced MSA XCell Sensors.
- Print calibration status reports to provide easy access to data.
- Query the system via email and then email reports.

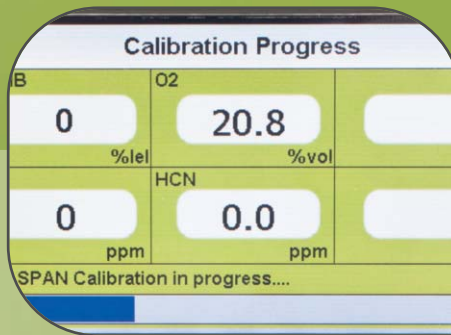
** Contact your local sales representative regarding availability.*

MSA ALTAIR®
Most advanced



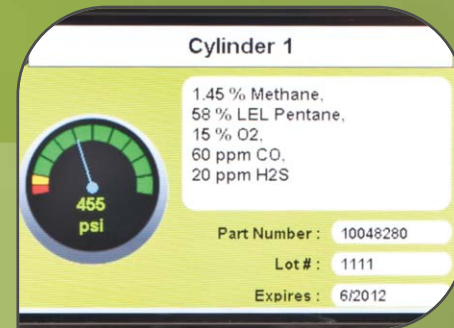
Color touch screen for ease of setup and viewing; no touch operation is needed to calibration or bump test

Clear and intuitive navigation via large touch buttons and scrolling arrows. When test completes, users view results on test stand popup screen and detailed information on PC dashboard.



RFID automated calibration gas setup, status alerts and traceability

Gas cylinder information necessary for successful calibration is automatically entered when using RFID-tagged gas cylinders, providing users with exceptionally easy setup. Onscreen gas cylinder pressure gauge shows multiple cylinder status simultaneously.



**Global platform
Many language**

18 languages and customers globally via onscreen menu. More than English are the

l, Configure
Software, proactively
addressing gas exposure
missing or failed calibrations



Visual indicators on GALAXY GX2 System and software

Status at a glance is provided through various light indicators: test stand pass/fail LED, charging progress LEDs on multi-unit charger and lighted cylinder band on electronic cylinder holder for low gas and expiration date warning display.



MSA Link Pro and MSA Link Software

Redesigned software interface offers efficient setup; configure every detector's set points quickly and save settings. Overdue calibration and bump test email notifications are delivered via MSA Link Pro Software and an active network connection. Master test stand sends scheduled emails based upon detector conditions and events.



**Significant cost
ownership redu**

System offers m
in cost of owners
gas expenses v
performance MS
in faster total t
Gas Detectors.

and expiration warnings
ALAXY GX2 System and
Link Pro Software.

stickers for gas detectors
and fast user information.

for gas exposures,
responses to users.

THE MSA COMMITMENT. FROM THE LATEST IN SENSOR TECHNOLOGY TO INSTRUMENT DESIGN AND MANUFACTURING, MSA HAS THE CAPABILITIES AND EXPERTISE TO SUPPORT YOUR PORTABLE GAS DETECTION CHALLENGES.



Options
 are available to serve
 y. Easily change languages
 u. Languages chosen other
 ose most widely spoken.



**of
 action**
 ore than 50% reduction
 hip including calibration
 when used with high-
 A XCell Sensors, resulting
 esting of ALTAIR Family

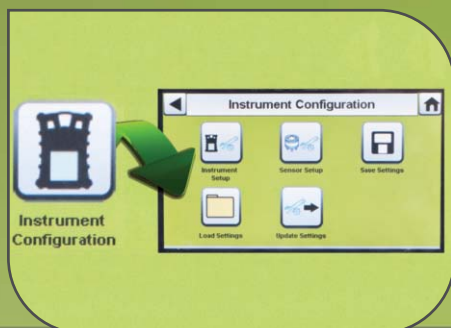
Simultaneous testing of up to 10 gas detectors

Calibrate up to 10 gas detectors simultaneously in less time than it takes most competitive units to test one. Patented gas flow process increases pressure from demand flow regulator to deliver consist gas flow from one to 10 units. Connect up to 10 test stands and four cylinder holders to perform simultaneous tests.



Securely configure gas detectors at the touch of a button

The GALAXY GX2 Automated Test System allows users to configure many gas detector and cylinder settings at the test stand, settings that can be saved to a reusable file. Settings are stored on a digital-secure USB; no gas detector setting files are stored locally.



MSA XCell Sensor Technology

The GALAXY GX2 Automated Test System is optimized for use with MSA's high performance XCell Sensors. Sensors offer end-of-sensor-life warning, typical life greater than four years for combustible, O₂, CO/H₂S, and SO₂ sensors and greater than three years for NH₃ and Cl₂ sensors. Bump test in less than 15 seconds, span calibration time of 60 seconds and sensor response and clear times in less than 15 seconds for most common sensor configurations.

Your MSA multigas detectors are always ready for use*

Your ALTAIR 4X and ALTAIR 5X Multigas Detectors are available to use immediately. If you're faced with an urgent, short-notice situation, these units are ready for deployment, ideal for emergency applications.



* Contact your local sales representative regarding availability.

GALAXY GX2 System Ordering Information

GALAXY GX2 System Test Stand

	1 VALVE (for use with 1 calibration gas cylinder)		4 VALVE (for use with 1-4 calibration gas cylinders)	
	Charging*	No-charging	Charging*	No-charging
ALTAIR / ALTAIR PRO Single-Gas Detector	–	10128644	–	10128643
ALTAIR 4/4X Multigas Detector	10128630	10128642	10128629	10128641
ALTAIR 5/5X Multigas Detector	10128626	10128628	10128625	10128627

*Contact your local sales representative regarding availability.

The GALAXY GX2 System test stand comes with pre-configured plugs, barbs, fresh air filter, power supply with corresponding plug, spare parts kit (gas tubing, barbs and plugs), Ethernet cable (short cable for connection between test stands), and screen protector. Please see ordering information below for further system components, including electronic cylinder holder (includes regulator) or non-electronic cylinder holder (without regulator), MSA Link Pro Software, digital secure USB key, end cap, and multi-unit charger.

Accessories

P/N	Description
10105756	Electronic cylinder holder
10125135	Non-electronic cylinder holder
10127111	4 GB SD card
10123938	MSA Link Pro Software key
10123937	Digital secure USB key
10125907	End cap
10127422	ALTAIR 4/4X Detector Multi-unit Charger, NA
10127427	ALTAIR 5/5X Detector Multi-unit Charger, NA
10127112	Laminated quick start guide
10127518	12" (TBR) Ethernet cable for test stand to test stand connection
10126657	DIN rail clip kit (2 clips & screws per kit)
10062364	Type Omega DIN Rail 0.5m, perforated, steel, zinc-plated
10062365	Type Omega DIN Rail 1m, perforated, steel, zinc-plated
10062366	Type Omega DIN Rail 2m, perforated, steel, zinc-plated
10082834	USB IR dongle (for use with MSA Link Software)
10034391	Demand flow regulator (universal)
710289	Large capacity (<3000 psi) demand regulator
10124286	NA power supply (1 of 2)
10127146	NA power cord (2 of 2)
10126268	Vehicle power adapter
10127808	Printer - detector or receipt sticker
10126437	Detector sticker label roll
10126138	Receipt & sticker label roll
10145138	Printer ribbon

Calibration Gas

P/N	Description
10048280	Calibration gas cylinder (34L) 1.45% CH ₄ , 15% O ₂ , 60 ppm CO, 20 ppm H ₂ S
10045035	Calibration gas cylinder (54L) 1.45% CH ₄ , 15% O ₂ , 60 ppm CO, 20 ppm H ₂ S
10117738	Calibration gas cylinder (58L) 1.45% CH ₄ , 15% O ₂ , 60 ppm CO, 20 ppm H ₂ S, 10 ppm SO ₂
10098855	Calibration gas cylinder (34L) 1.45% CH ₄ , 15% O ₂ , 60 ppm CO, 20 ppm H ₂ S, 10 ppm SO ₂
10103262	Calibration gas cylinder (58L) 1.45% CH ₄ , 15% O ₂ , 60 ppm CO, 20 ppm H ₂ S, 2.5% CO ₂

Technical Specifications

Operating Temperature	GALAXY GX2 System	0-40°C
Power Input	Power module	100-240 VAC, 47-63 Hz
	Optional vehicle module	9-32 VDC
Physical Characteristics	Test stand	Height: 11.80" (299.72 mm)
		Width: 6.50" (165.10 mm)
		Depth: 7.90" (200.66 mm)
		Material: acrylonitrile butadiene ABS
	Cylinder holder	Height: 11.80" (299.72 mm)
		Width: 6.50" (165.10 mm)
		Depth: 6.10" (154.94 mm)
		Material: acrylonitrile butadiene ABS
	Multi-unit charger	Height: 11.80" (299.72 mm)
		Width: 6.50" (165.10 mm)
		Depth: 6.44" (163.58 mm)
		Material: acrylonitrile butadiene ABS

Note: This bulletin contains only a general description of the products shown. While uses and performance capabilities are described, under no circumstances shall the products be used by untrained or unqualified individuals and not until the product instructions including any warnings or cautions provided have been thoroughly read and understood. Only they contain the complete and detailed information concerning proper use and care of these products.



ID 0818-18-MC / May 2013

© MSA 2013 Printed in U.S.A.

MSA Corporate Center
1000 Cranberry Woods Drive
Cranberry Township, PA 16066 USA
Phone 724-776-8600
www.MSAafety.com

U.S. Customer Service Center
Phone 1-800-MSA-2222
Fax 1-800-967-0398

MSA Canada
Phone 1-800-672-2222
Fax 1-800-967-0398

MSA Mexico
Phone 01-800-672-7222
Fax 52-44 2227 3943

MSA International
Phone 724-776-8626
Toll Free 1-800-672-7777
FAX 724-741-1559

MSA Europe
Phone +49 (0) 306886-0
Fax +49 (0) 306886-1558



MSA
The Safety Company