

ALTAIR® 5X Multigas Detector

With MSA XCell® Sensor Technology



IT'S WHAT'S
INSIDE
THAT COUNTS

Now with
advanced PID
for VOC detection

*Because every life has a **purpose...***

Save Time, Save Money, Save Lives

Building upon decades of sensor design experience, MSA has revolutionized sensor technology with design breakthroughs that improve performance.

- XCell exotic SO₂, NO₂, Cl₂, and NH₃ Sensors for expanded monitoring applications
- Sensor response and clear times in less than 15 seconds for most common sensor configurations
- Bump test in less than 15 seconds for most common sensor configurations
- Span calibration time of 60 seconds for most common sensor configurations
- Greater signal stability and repeatability under changing or extreme environmental conditions
- All XCell Sensors are capable of plug-and-play installation for easy reconfiguration,

With reliable, extended-life XCell Sensors, there's no need to replace sensors after two years.

- Typical life greater than four years for combustible, O₂, CO/H₂S, NO₂, and SO₂ sensors
- Typical life greater than three years for NH₃ and Cl₂ sensors
- Combustible sensor proprietary operating mode helps maintain poison-resistance throughout sensor life
- End-of-sensor-life warning gives advanced notice to user, reducing service outages

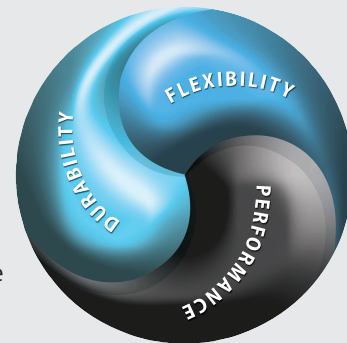
Three-year back-to-back instrument warranty includes CO/H₂S/O₂/LEL/SO₂, NO₂ XCell and IR sensors

**Two-year warranty on NH₃ and Cl₂;
minimum 12-month warranty on other sensors**

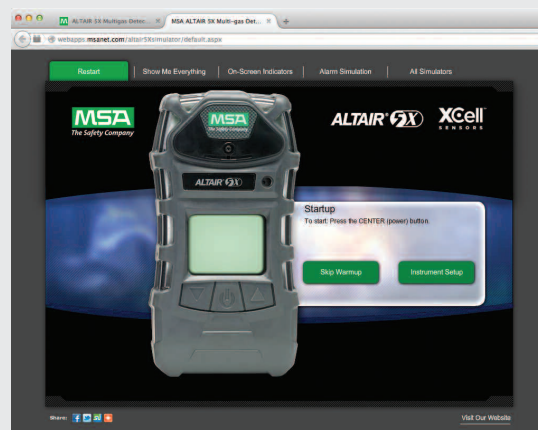
Count on the ALTAIR 5X Multigas Detector

Exclusive MotionAlert™ and InstantAlert™ features make the ALTAIR 5X Multigas Detector ideal for applications such as confined space monitoring. **MotionAlert** feature activates when a user becomes disabled and motionless, quickly alerting others as to the disabled user's location. And with a simple push of a button, **InstantAlert** feature enables users to manually warn others of potentially hazardous situations.

The ALTAIR 5X Detector is the long-life leader. To prove it, the instrument comes with a full three-year warranty,* an entire year longer than the industry average, so that you can depend upon the ALTAIR 5X Detector to withstand the punishment that other portable gas detectors can't.



Online Training and Product Simulation



MSA's online training and Web content include the ALTAIR 5X Multigas Detector simulator that takes viewers through instrument operation. This tool is found at www.msasafety.com/altair5x.

MSA-U® Training Center is a feature-rich online training center that offers specific care and use training for the ALTAIR 5X Detector. Detailed training reports are available for managers, while an end-of-course quiz ensures effective training with feedback on incorrect test answers. Visit www.MSAafety.com/msau.

*Three-year warranty is for most common sensor configurations.

IT'S WHAT'S INSIDE THAT COUNTS

WORKERS who face potentially hazardous situations deserve the best protection available. At MSA, we work tirelessly to build smarter, better gas detection instruments upon which people of the world rely. First we introduced MSA's advanced technology with the ALTAIR 4X Multigas Detector with XCell Sensors. Now we're proud to offer the most advanced sensor technology available in a six-gas portable instrument:

the ALTAIR 5X Multigas Detector with XCell Sensor Technology and PID option.

Built upon Durability

The ALTAIR 5X Multigas Detector for LEL, O₂ and toxic gas detection is as tough and functional as it looks. A rugged, rubberized polycarbonate housing provides unsurpassed durability, including the ability to survive a 10-foot drop. Inside, a field-proven integral pump provides consistent gas flow without the concerns of externally-attached components. Ergonomic design, glove-friendly buttons and high-contrast display make the ALTAIR 5X Multigas Detector easy to use for all applications.

Powered by Performance

Toughness and durability are only part of the story. The real strength of the ALTAIR 5X Multigas Detector comes from state-of-the-art sensor technology. By miniaturizing sensor-controlling electronics and placing them inside the sensor itself, MSA XCell Sensors offer superior stability, accuracy, repeatability, and a typical life of more than double the industry average.

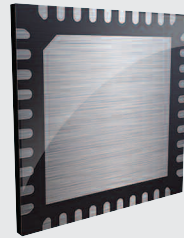
MSA XCell Sensors are a breakthrough in chemical and mechanical sensor design, enabling faster response and span calibration times, saving you time, calibration gas, maintenance costs, and in turn, money. But most importantly, saving seconds in response time can also mean saving lives.

In addition to MSA XCell Sensors, the ALTAIR 5X Detector can be equipped with advanced PID options for VOC detection. Our wide variety of IR sensors covers many gases and ranges including CO₂.

Flexibility & Connectivity to Meet Your Needs

MSA's ALTAIR 5X Multigas Detector is configurable with either high-resolution color or monochrome LCD display with 18 built-in languages. MSA's Logo Express® Service is available to customize the color display. Interchangeable plug-and-play slots for MSA XCell Sensors indicated means that up to six gases can be monitored simultaneously.

The ALTAIR 5X Detector is fully compatible with the MSA GALAXY® GX2 Automated Test System and MSA Link™ Pro and MSA Link Software to efficiently manage your entire fleet.



ADDING MICROELECTRONICS inside the sensors provides more control and higher performance than previous generations.



MSA XCELL SENSORS are a breakthrough in chemical and mechanical sensor design, enabling faster response and span calibration times.

ALTAIR 5X Multigas Detector Features



FULLY COMPATIBLE WITH MSA LINK AND LINK PRO SOFTWARE AND MSA GALAXY GX2 TEST SYSTEM

VARIETY OF OPTIONAL MSA INFRARED SENSORS

ROBUST INTEGRAL PUMP FOR CONSISTENT FLOW AND IMPROVED DURABILITY

HIGH CONTRAST COLOR OR MONOCHROME DISPLAY

ADVANCED OPTIONAL VOC DETECTION

18 LANGUAGE OPTIONS

LARGE BUTTONS FOR EASY OPERATION

ADVANCED MOTIONALERT AND INSTANTALERT FEATURES

HIGH PERFORMANCE MSA XCELL SENSORS

BLUETOOTH WIRELESS CONNECTIVITY

24-HOUR BUMP CHECKMARK

XCELL SENSOR END-OF-LIFE INDICATOR

DURABLE, RUBBERIZED HOUSING FOR SECURE GRIP

MSA-exclusive feature

Complete Solutions

The ALTAIR 5X Detector with advanced PID (photoionization) sensor option sets the gas detection bar even higher to meet evolving and diverse needs for VOC detection. PIDs are required tools not only for industrial hygiene, HazMat and specialized detection applications, but are increasingly a key element for safety teams and industrial operations. The unmatched durability of the ALTAIR 5X Detector with advanced XCell Sensor technology is now combined with PID to provide a complete platform for users around the world. What's more, PID instrument data can now seamlessly integrate into MSA's proven fleet management infrastructure.

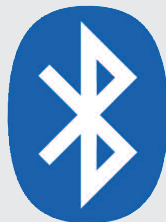


Bluetooth Wireless Technology

By incorporating Bluetooth as a standard feature, MSA brings the benefits of wireless safety to everyone.

By downloading the free MSA ALTAIR Connect App from Google Play, any compatible Android device becomes an enhanced safety and productivity tool when paired with the ALTAIR 5X Detector.

- Get gas detection readings and man-down alerts
- Configure instruments remotely
- Automate gas detector records and events
- Drive greater productivity and greater workflow efficiency
- Achieve supervisory awareness of worker safety
- Send gas alarms via text



Technical Specifications

| Gas type | Range | Resolution |
|--|---------------------------|---------------------------|
| COMBUSTIBLE | 0-100% LEL | 1% LEL |
| COMBUSTIBLE | 0-5% Vol, CH ₄ | 0.05% Vol CH ₄ |
| OXYGEN | 0-30%Vol | 0.1%Vol |
| CARBON MONOXIDE | 0-2000 ppm | 1 ppm |
| CARBON MONOXIDE | 0-10,000 ppm | 5 ppm |
| HYDROGEN SULFIDE | 0-200 ppm | 1 ppm |
| HYDROGEN SULFIDE - LC | 0-100 ppm | 0.1 ppm |
| SULFUR DIOXIDE | 0-20 ppm | 0.1 ppm |
| CHLORINE | 0-10 ppm | 0.05 ppm |
| AMMONIA | 0-100 ppm | 1 ppm |
| NITROGEN DIOXIDE | 0-20 ppm | 0.1 ppm |
| NITROGEN DIOXIDE (XCELL) | 0-50 ppm | 0.1 ppm |
| CHLORINE DIOXIDE | 0-1 ppm | 0.01 ppm |
| PHOSPHINE | 0-5 ppm | 0.05 ppm |
| HYDROGEN CYANIDE | 0-30 ppm | 0.5 ppm |
| CARBON DIOXIDE, CO ₂ | 0-10%Vol | 0.01%Vol |
| BUTANE, C ₄ H ₁₀ | 0-25%Vol | 0.1%Vol |
| METHANE, CH ₄ | 0-100%Vol | 1%Vol |
| PROPANE, C ₃ H ₈ | 0-100%Vol | 1%Vol |
| PID - 10.6EV | 0-2000 ppm | 0.1 ppm |

| | |
|---|--|
| DROP TEST | 10 feet |
| HOUSING | Rugged rubberized armor |
| WEIGHT | 1 lb (without IR sensor) |
| DIMENSIONS (L X W X D) | 6.69" H x 3.49" W x 1.79" D without belt clip, PID, or IR sensor |
| AUDIBLE ALARM | >95 dB typical |
| VISUAL ALARM | 2 ultra-bright LEDs, on top |
| VIBRATING ALARM | Standard |
| MOTION ALERT & INSTANT ALERT | Standard |
| DISPLAY | High-contrast monochrome or color display |
| BACKLIGHT | Adjustable time-out |
| BATTERY | Rechargeable Li-ION or AA alkaline |
| RUN TIME | 20 hrs @ room temperature |
| INGRESS PROTECTION | IP65 |
| STANDARD WARRANTY | 3 years on CO, H ₂ S, LEL, O ₂ , SO ₂ , and IR sensors 2 years on NH ₃ , Cl ₂ sensors 1 year on other sensors |

For additional customized versions and calibration gases, use MSA's ATO ordering sheet or contact MSA Customer Service at 1-800-MSA-2222.

Note: This bulletin contains only a general description of the products shown. While uses and performance capabilities are described, under no circumstances shall the products be used by untrained or unqualified individuals and not until the product instructions including any warnings or cautions provided have been thoroughly read and understood. Only they contain the complete and detailed information concerning proper use and care of these products.



MSA – The Safety Company
1000 Cranberry Woods Drive
Cranberry Township, PA 16066 USA
Phone 724-776-8600
www.MSAsafety.com

U.S. Customer Service Center
Phone 1-800-MSA-2222
Fax 1-800-967-0398

MSA Canada
Phone 1-800-MSA-2222
Fax 1-800-967-0398

MSA Mexico
Phone 01 800 672 7222
Fax 52-44 2227 3943

MSA International
Phone 724-776-8626
Toll Free 1-800-672-7777
Fax 724-741-1553
Email msa.international@msasafety.com

ID 0802-46-MC / Sept 2015
© MSA 2015 Printed in U.S.A.

Ordering Information

| DESCRIPTION | UL P/N | CSA P/N |
|---|---|----------|
| INSTRUMENT ONLY KITS | | |
| ALTAIR 5X DETECTOR MONO, (LEL, O ₂ , CO, H ₂ S) | 10116924 | 10115118 |
| ALTAIR 5X DETECTOR MONO, (LEL, O ₂ , CO, H ₂ S, SO ₂) | 10116925 | 10115119 |
| ALTAIR 5X DETECTOR COLOR, (LEL, O ₂ , CO, H ₂ S, PID) | 10165445 | |
| STANDARD KITS - MONOCHROME DISPLAY, 10-FT SAMPLING LINE, 1-FT PROBE | | |
| ALTAIR 5X DETECTOR MONO, (LEL, O ₂ , CO, H ₂ S) | 10116926 | 10115120 |
| ALTAIR 5X DETECTOR MONO, (LEL, O ₂ , CO, H ₂ S, SO ₂) | 10116927 | 10115141 |
| DELUXE KITS - COLOR DISPLAY, 10-FT SAMPLING LINE, 1-FT PROBE | | |
| ALTAIR 5X DETECTOR COLOR, (LEL, O ₂ , CO, H ₂ S) | 10116928 | 10115142 |
| ALTAIR 5X DETECTOR COLOR, (LEL, O ₂ , CO, H ₂ S, SO ₂) | 10116929 | 10115143 |
| ALTAIR 5X DETECTOR COLOR, (LEL, O ₂ , CO, H ₂ S, PID) | 10165446 | |
| ALTAIR 5X GALAXY GX2 AUTOMATED TEST SYSTEM – N. America Configuration | | |
| 1 CYLINDER, CHARGING | 10128626 | |
| UP TO 4 CYLINDERS, CHARGING | 10128625 | |
| 1 CYLINDER, NON-CHARGING | 10128628 | |
| UP TO 4 CYLINDERS, NON-CHARGING | 10128627 | |
| CALIBRATION GAS | | |
| Description | Part No. | |
| | 34 L | 58 L |
| | 116L | |
| 1.45% CH ₄ , 15% O ₂ , 60 PPM CO, 20 PPM H ₂ S | 10048280 | 10045035 |
| 1.45% CH ₄ , 15% O ₂ , 60 PPM CO, 20 PPM H ₂ S, 10 PPM SO ₂ | 10098855 | 10117738 |
| | 34 L | 58 L |
| | 100L | |
| 100 PPM ISOBUTYLENE | — | — |
| | | 494450 |
| SENSOR SPARE PARTS/REPLACEMENTS | | |
| KIT, XCell Ex SENSOR, COMBUSTIBLE | 10106722 | |
| KIT, XCell O ₂ SENSOR | 10106729 | |
| KIT, XCell CO/H ₂ S TWO-TOX SENSOR | 10106725 | |
| KIT, XCell CO/H ₂ S-LC TWO-TOX SENSOR | 10121213 | |
| KIT, XCell CO H ₂ -RES/H ₂ S TWO-TOX SENSOR | 10121214 | |
| KIT, XCELL CO-HC SENSOR | 10121216 | |
| KIT, XCell NO ₂ /CO TWO-TOX SENSOR | 10121217 | |
| KIT, REPLACEMENT, HCN | 10106375 | |
| KIT, XCell Cl ₂ SENSOR REPLACEMENT | 10106728 | |
| KIT, REPLACEMENT, ClO ₂ | 10080222 | |
| KIT, XCell SO ₂ SENSOR REPLACEMENT | 10106727 | |
| KIT, REPLACEMENT, NO ₂ | 10080224 | |
| KIT, XCell NH ₃ SENSOR REPLACEMENT | 10106726 | |
| KIT, REPLACEMENT, PH ₃ | 10116638 | |
| KIT, REPLACEMENT, NO | 10114750 | |
| KIT, REPLACEMENT, PID 10.6EV SENSOR | 10165271 | |
| ACCESSORIES | | |
| USB IR RECEIVER | 10082834 | |
| BATTERY PACK, ALKALINE | 10114837 | |
| CERTIFICATIONS/APPROVALS | | |
| USA | Class I, Division 1, Groups A, B, C & D Class II, Division 1, Groups E, F & G Class III, Division 1 Ambient temperature: -40°C to +50°C; T4 ALTAIR 5X Multigas Detector with alkaline battery pack T3/T4 ALTAIR 5X or ALTAIR 5X iR Multigas Detector with rechargeable battery pack T4 | |
| CANADA | Class I, Division 1, Groups A, B, C & D CAN/CSA C22.2 No. 152 Combustible Gas Detection Instruments C22.2 No. 152 Performance Ambient Temperature: -20°C to +50°C C22.2 No. 157 Intrinsic Safety Ambient Temperature: -40°C to +50°C ALTAIR 5X Multigas Detector with alkaline battery pack T3/T4 ALTAIR 5X or ALTAIR 5X iR Multigas Detector with rechargeable battery pack T4 | |