

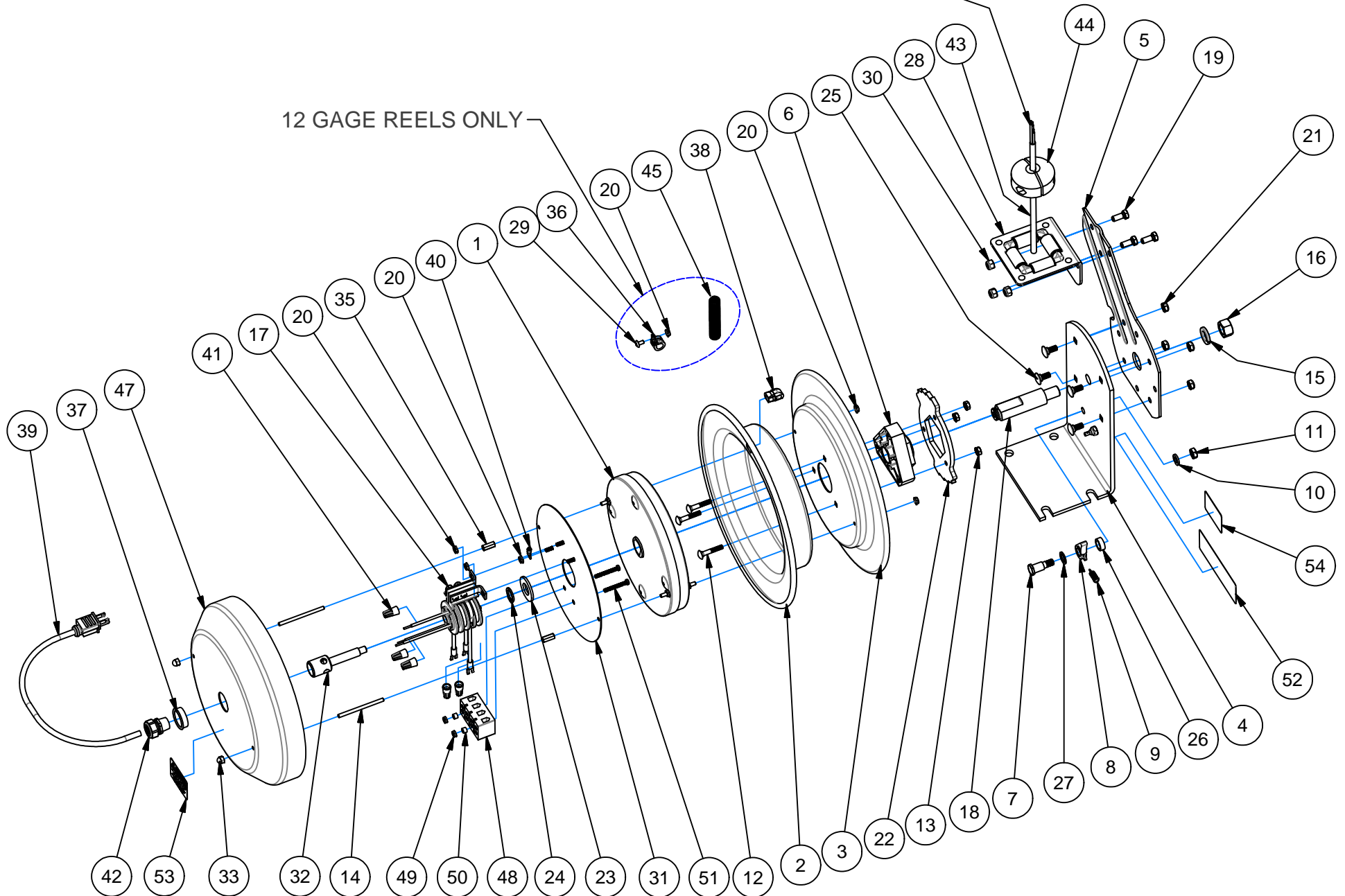
EXP-90

REVISION: K
ECO NO.: 2933
BY: J. KUSBEL
DATE: 3/29/2012

COXREELS SERIES PC13 CORD REELS

OUTPUT OPTIONS VARY, SEE BILL OF MATERIAL
ITEM 46 FOR SPECIFIC OPTION.

12 GAGE REELS ONLY



ITEM	PART	DESCRIPTION	QTY
3	140-1	DISK: 13" REEL	1
4	1954	BASE: 13" REEL	1
5	1732-1	ARM: GUIDE, 13"	1
6	1776-3	ASSEMBLY: HUB BEARING, 1"	1
7	1620	BOLT: SHOULDER, 1/2" X 1-1/2"	1
8	640-1-SS	CAM: LOCKING	1
9	274-1-SS	SPRING: LOCK DOG	1
10	437	WASHER: LOCK, 3/8"	1
11	184	NUT: 3/8-16 JAM	1
12	1953	BOLT: 1/4-20 X 1-1/2" CARRIAGE	3
13	125	NUT: 1/4-20 KEPS	3
14	7197	STUD: 10-32 X 3" THREADED	2
15	438	WASHER: 5/8" LOCK	1
16	3584	NUT: 5/8-11	1
18	1956	AXLE: 1"	1
19	312	BOLT: 5/16-18 X 3/4" HEX	3
20	130	NUT: #10-32 KEPS, QTY. = 7 IF 12-GAGE	5
21	111-1	NUT: 5/16-18 NYLOCK (LOW PROF)	4
22	1924	RING: LOCKING	1
23	1755-1	WASHER: SPACER	1

ITEM	PART	DESCRIPTION	QTY
24	1753	RING: (5160-75) RETAINING	1
25	10220-75	BOLT: 5/16-18x3/4" CARRIAGE	4
26	6440-SS	WASHER: SPACER	1
27	6441-1	WASHER: PLASTIC	1
28	1728-2	ASSEMBLY: ROLLER BRACKET	1
30	111	NUT: 5/16-18 LOCK	3
31	7166	PLATE: ELECTRICAL MOUNTING	1
32	7161	PORT: INLET	1
33	7196	NUT: #10-32 ACORN	2
35	7163	NUT: #10-32 X 3/4" COUPLING	2
37	7167-1	BUSHING: OPEN, PLASTIC	1
47	7162	COVER: 13" ELECTRICAL	1
** 48	8284	BLOCK: TERMINAL	1
** 49	10137	NUT: #8-32 KEPS	2
** 50	8286	SPACER: NYLON	2
** 51	8285	SCREW: #8-32 X 1-1/4"	2
52	10925-5	LABEL: PRODUCT, STANDARD	1
53	10934	LABEL: CAUTION, PC REELS	1
54	10935	LABEL: CORD SPECS, PC REEL	1

ITEM NUMBER

MODEL	1	2	17	29	36	38	* 39	40	* 41	42	* 43	* 44	* 45	* 46	
	SPRING	DISK	SLIP RING	SCREW (2)	CLAMP (2)	BUSHING 90°	INPUT CABLE	TERMINAL RING	WIRE NUT (5)	STRAIN RELIEF	CABLE (FT)	STOP	CABLE GUARD	ACCESSORY ITEM	
PC13-3516-A	1959-5	7191	7155	-	-	7169-2	7198	7175-1	7176-1	7168-1	-	131-1	-	7188-1	RECEPTICAL, SINGLE, MOLDED, 35'
PC13-5016-A	1959-8	7191	7155	-	-	7169-2	7198	7175-1	7176-1	7168-1	-	131-1	-	7188-2	RECEPTICAL, SINGLE, MOLDED, 50'
PC13-3516-C	1959-5	7191	7155	-	-	7169-2	7247	7175-1	7176-1	7168-1	-	131-1	-	7208-1	TUBE LIGHT, FLUORESCENT, 35'
PC13-5016-C	1959-8	7191	7155	-	-	7169-2	7247	7175-1	7176-1	7168-1	-	131-1	-	7208-2	TUBE LIGHT, FLUORESCENT, 50'
PC13-3516-D	1959-5	7191	7155	-	-	7169-2	7198	7175-1	7176-1	7168-1	-	131-1	-	7207-1	ANGLE LIGHT, FLUORESCENT, 35'
PC13-5016-D	1959-8	7191	7155	-	-	7169-2	7198	7175-1	7176-1	7168-1	-	131-1	-	7207-2	ANGLE LIGHT, FLUORESCENT, 50'
PC13-3516-D2	1959-5	7191	7155	-	-	7169-2	7198	7175-1	7176-1	7168-1	-	131-1	-	8695-1	LIGHT, DUAL FLUORESCENT, 35'
PC13-5016-D2	1959-8	7191	7155	-	-	7169-2	7198	7175-1	7176-1	7168-1	-	131-1	-	8695-2	LIGHT, DUAL FLUORESCENT, 50'
PC13-3516-E	1959-5	7191	7155	-	-	7169-2	7198	7175-1	7176-1	7168-1	-	131-1	-	7206-1	CAGED LIGHT, INCANDESCENT, 35'
PC13-5016-E	1959-8	7191	7155	-	-	7169-2	7198	7175-1	7176-1	7168-1	-	131-1	-	7206-2	CAGED LIGHT, INCANDESCENT, 50'
PC13-3516-F	1959-5	7191	7155	-	-	7169-2	7198	7175-1	7176-1	7168-1	7172-16	131-1	-	7205-1	RECEPTICAL, DUPLEX, GFCI, 15 AMP
PC13-5016-F	1959-8	7191	7155	-	-	7169-2	7198	7175-1	7176-1	7168-1	7172-16	131-1	-	7205-1	RECEPTICAL, DUPLEX, GFCI, 15 AMP
PC13-3516-X	1959-5	7191	7155	-	-	7169-2	7198	7175-1	7176-1	7168-1	7172-16	131-1	-	-	NONE
PC13-5016-X	1959-8	7191	7155	-	-	7169-2	7198	7175-1	7176-1	7168-1	7172-16	131-1	-	-	NONE
PC13L-3516	1959-5	7191	7155	-	-	7169-2	-	7175-1	-	7168-1	-	-	-	-	NONE
PC13L-5016	1959-8	7191	7155	-	-	7169-2	-	7175-1	-	7168-1	-	-	-	-	NONE
PC13-3516-4	1959-5	7191-1	7156	-	-	7169-3	7173-16	7175-1	7176-1	7168-2	7173-16	131-1	-	-	NONE
PC13-5016-4	1959-8	7191-1	7156	-	-	7169-3	7173-16	7175-1	7176-1	7168-2	7173-16	131-1	-	-	NONE
PC13-3512-A	1960-1	7192	7155	245	7199	-	7174-2	7175-2	7176-2	7168-2	7172-12	131	237-2	7215-2	RECEPTICAL, SINGLE, 20 AMP
PC13-5012-A	1960	7192	7155	245	7199	-	7174-2	7175-2	7176-2	7168-2	7172-12	131	237-2	7215-2	RECEPTICAL, SINGLE, 20 AMP
PC13-3512-B	1960-1	7192	7155	245	7199	-	7174-2	7175-2 (4)	7176-2	7168-2	7172-12	131	237-2	7203-2	RECEPTICAL, QUAD BOX, 20 AMP
PC13-5012-B	1960	7192	7155	245	7199	-	7174-2	7175-2 (4)	7176-2	7168-2	7172-12	131	237-2	7203-2	RECEPTICAL, QUAD BOX, 20 AMP
PC13-3512-F	1960-1	7192	7155	245	7199	-	7174-2	7175-2 (4)	7176-2	7168-2	7172-12	131	237-2	7205-2	RECEPTICAL, DUPLEX, GFCI, 20 AMP
PC13-5012-F	1960	7192	7155	245	7199	-	7174-2	7175-2 (4)	7176-2	7168-2	7172-12	131	237-2	7205-2	RECEPTICAL, DUPLEX, GFCI, 20 AMP
PC13-3512-X	1960-1	7192	7155	245	7199	-	7174-2	7175-2	7176-2	7168-2	7172-12	131	237-2	-	NONE
PC13-5012-X	1960	7192	7155	245	7199	-	7174-2	7175-2	7176-2	7168-2	7172-12	131	237-2	-	NONE
PC13L-3512	1960-1	7192	7155	245	7199	-	-	7175-2	-	7168-2	-	-	237-2	-	NONE
PC13L-5012	1960	7192	7155	245	7199	-	-	7175-2	-	7168-2	-	-	237-2	-	NONE
PC13-3512-4	1960-1	7192	7156	245	7199	-	7173-12	7175-2	7176-2	7168-3	7173-12	131	237-2	-	NONE
PC13-5012-4	1960	7192	7156	245	7199	-	7173-12	7175-2	7176-2	7168-3	7173-12	131	237-2	-	NONE

ACCESSORIES

A - SINGLE IND. RECEPTICAL B - QUAD BOX IND. RECEPTICAL C - FLUORESCENT TUBE LIGHT D - FLUORESCENT ANGLE LIGHT D2 - DUAL FLUORESCENT LIGHT E - CAGED INCANDESCENT LIGHT
 F - DUPLEX RECEPTICAL, GFCI X - NONE 4 - FOUR WIRE CABLE READY

* ON "LESS CABLE" MODELS (PC13L-) EXCLUDE ITEMS #39, #41, #43, #44, #45 AND #46

** ON "LESS CABLE" MODELS (PC13L-) INCLUDE ITEMS #48, #49, #50, AND #51

REEL ASSEMBLY REPORTS: R100 (LATCHOUT REMOVAL), R101 (LOCKING RING PLACEMENT), R112 (TIGHTENING AND TOR OPERATING INST #028 (CORD INSTALLATION PROCEDURE)

REVISION: K

ECO: 2933

DATE: 3/29/2012

NAME: J. KUSBEL