



[www.coilhose.com](http://www.coilhose.com)

# FROM THE COMPRESSOR TO THE AIR TOOL SINCE 1969



**Hose • Tubing • Blow Guns • Couplers • FRLs**

# COILED HOSE



## **NYLON SELF-STORING AIR HOSE**

This lightweight, permanently-coiled hose is manufactured from tough, abrasion-resistant Nylon 12 and designed to withstand temperatures between -60° F and +200° F.

## **STOWAWAY™ HEAVY DUTY NYLON AIR HOSE**

Stowaway Hose is designed with extra heavy wall thickness to meet the requirements of the most demanding applications. Heavy walls provide additional protection against oil, grease, gasoline and abrasion as well as increased working pressure, making this hose a good choice for construction sites, cement plants, mining operations, heavy duty tools and other harsh environments.



## **FLEXCOIL® POLYURETHANE SELF-STORING AIR HOSE**

FLEXCOIL is the toughest Polyurethane air hose available. This hose resists abrasion and retains its flexibility under the most demanding applications. FLEXCOIL is also lightweight, yet extremely durable, so it will withstand the rigors of tough industrial environments while maintaining its resiliency over the life of the hose.

## **FLEXEEL® POLYURETHANE SELF-STORING AIR HOSE**

The features of FLEXEEL in a coiled hose. This lightweight hose is extremely flexible and has excellent coil memory. The 8" supply end and 16" working end pigtails eliminate the need for whip hoses.



## **TWIN BONDED NYLON SELF-STORING AIR HOSE**

Twin Bonded Nylon Hose provides an efficient way to service applications that require air and fluid transport or air and an exhaust return. One yellow tube and one natural colored tube simplify tube identification.

# STRAIGHT HOSE



## FLEXEEL® POLYURETHANE REINFORCED STRAIGHT HOSE

FLEXEEL is extremely lightweight and tough, and is ideal for either outdoor contractor use or indoor industrial use. FLEXEEL also remains flexible in extreme cold environments (down to  $-40^{\circ}\text{F}$ ). FLEXEEL is now available with strain relief that incorporates a built-in reusable fitting. This reusable strain relief is completely field-repairable and provides an extremely tight bend radius, giving the user a greater range of motion, extending the life of the hose and virtually eliminating the possibility of kinking at the connection.

## FLEXEEL MAX® POLYURETHANE REINFORCED STRAIGHT HOSE

FLEXEEL's bigger brother. FLEXEEL MAX comes in a HI-VIZ Eel Green™ color with a higher pressure rating of 300 PSI, complete with a field-repairable reusable fittings, a 1/4" Ball Swivel Coupler and our new Air Safety Plug™, a connector which prevents dangerous "hose whip". The Eel Strap™ is already assembled on the hose, making it easier to coil, store and carry after use.



## GENERAL PURPOSE HOSE

Features an EPDM cover, backing and tubing with a single braid polyester rayon cord for additional strength. EPDM rubber hose is designed for either air or water use.

## LOCK-ON RUBBER HOSE

Lock-on hose and fittings eliminate the need for ferrules or clamps, for quick, permanent in-the-field installations and repairs.



## THERMOPLASTIC HOSE

Tough PVC cover provides protection against scrapes, cuts and abrasion and is resistant to oils.

# STRAIGHT HOSE



*Yellow Belly*

HYBRID PVC AIR HOSE

## YELLOW BELLY® HYBRID PVC AIR HOSE

YELLOW BELLY is constructed of a lightweight yet durable hybrid PVC material, and offers an excellent alternative to the traditional rubber air hose. YELLOW BELLY lays flat, rolls out and stores easily while offering excellent low temperature flexibility and 300 psi working pressure. Strain relief prevents hose from kinking at fitting.

## YELLOW BELLY® HOSE REEL

Keep your Yellow Belly neatly stored and ready to work with Yellow Belly Hose Reel.



## YELLOW BELLY® BULK

Quickly assemble hoses from bulk reels, or repair hoses in the field.

## YELLOW BELLY® WASH DOWN

Enjoy the same characteristics of Yellow Belly, but in an industrial wash down.



## GARDEN FLEHEEL SLENDER-PROFILE HOSE

Coilhose's Garden Flexeel polyurethane hose is incredibly lightweight and highly durable. The hose has a slender profile for compact storage, and remains flexible even in very low temperatures.

## HEAVY DUTY NEOPRENE HOSE

Neoprene rubber offers high oil resistance. Perfect for automotive shops.



*180 Bend Radius  
with Strain Relief*

## GILAFLEX

High Pressure PVC that offers reusable fittings with a true strain relief. With a working pressure of 325 psi @ 70° F, this is a great industrial hose in warmer climates.

**GILAFLEX**  
INNER-BRAIDED PVC AIR HOSE

# PLASTIC TUBING

## POLYURETHANE TUBING

Polyurethane is extremely flexible, resistant to kinking and withstands fuels and oils. A variety of colors in standard and metric sizes are available.

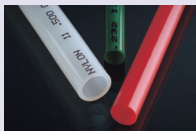


## MULTI-COLOR RIBBON TUBING

MCR Tubing is a cost effective method of routing two or more tubing lines. Made from 95 durometer Polyurethane, MCR can be installed faster than other jacketing options.

## NYLON TUBING

Nylon is best in applications requiring a lightweight, tough, chemical-resistant tubing. Six stock colors in standard and metric sizes are available.



## POLYETHYLENE TUBING

Polyethylene is one of the most popular choices for low pressure tubing due to its resistance to most chemicals and solvents, its flexibility and its economical cost.

## TUBING CUTTERS

These tubing cutters provide a square cut without deforming the tubing to allow a more secure connection into the fitting. They are durable enough to cut hard plastic tubing, yet lightweight and compact.



## HOSE CUTTERS

These hose cutters will accurately and easily cut out hose or tubing up to 1 1/4" diameter. The corrosion-resistant heavy steel blade provides a clean and straight cut, even on braided hose.

# BLOW GUNS & TIPS

## 600 SERIES BLOW GUNS

The 600 Series blow guns are manufactured with a tough zinc die-cast body. The ergonomic design and large operating lever reduce user fatigue and discomfort, even during long-term use.

The 600 Premium Series has a premium black finish for superior corrosion resistance.



## 660 SERIES BLOW GUNS

The 660 Series is the classic button blowgun with a compact, ergonomic design. The black coating provides enhanced corrosion resistance.



## 700 SERIES BLOW GUNS

The 700 Series is a dependable, durable and timeless pistol grip blowgun with a vinyl grip that provides enhanced comfort.



## 770 SERIES BLOW GUNS

The 770 Series is a lightweight polymer pistol grip blowgun with a variable flow trigger for enhanced control.



## IN-LINE 640 SERIES BLOW GUNS

The 640 Series is designed to be installed on a hose, this blowguns is always ready. Great for use at auto body shops with DA Sanders



## AIR BULLET

The Air Bullet is an innovative “push to activate” design that allows for cleaning of tubing and holes.



## BLOW GUN TIPS

Coilhose offers a variety of tips and extension to ensure you find one that suits your application. A few of our tips are show below.



Standard Safety



Safety Rubber



Non-Safety Plated Brass



Safety Booster



Safety Shield



Conical Rubber



High Volume Safety

# BLOW GUNS & TIPS



## TYPHOON HIGH VOLUME BLOW GUNS

The TYPHOON sets an industry standard for high volume safety blow guns. The TYPHOON is available with 1/4" NPT and higher flow 3/8" NPT in-ports. A variety of custom-designed nozzles and extensions are available. This gun provided up to 51 CFM and over three pounds of force for maximum blow off.

All-Metal  
Typhoon Pro

**Typhoon**  
Blow Gun



The TYPHOON is also available in an all-metal version for extremely harsh applications. The TYPHOON PRO has chrome plating on an aluminum body which resists chemicals and solvents and makes this gun easy to clean.

## CANNON EXTREME HIGH VOLUME AIR BLOW GUN

The Cannon Extreme High Volume Air Blow Gun uses the compressed air from your tow-behind compressor to clear heavy, stubborn debris.

COILHOSE CANNON®



## CEG-1 BLOW GUNS

The CEG-1 is ergonomically designed to fit the natural contour of the user's hand, maximizing comfort even during long-term use. This gives the user a wider range of motion to direct the additional CEG-1 working capacity right where it's needed, resulting in increased blow-off efficiency.

## REDI-BURST POCKET BLOW GUN

The Redi-Burst Pocket Blow Gun delivers the same performance as larger thumb-lever blow guns, but is much smaller. The Redi-Burst Pocket Blow Gun requires less storage space in a tool box and is portable enough to keep in a pocket or on a tool belt. Accepts all standard 1/8" Coilhose Pneumatics blow gun tips.



**REDI-BURST**  
POCKET BLOW GUN



## POCKET SERIES

The pocket series easily clips in a pocket. This gun is great for plant personnel who are mobile throughout the day.

# FILTERS, REGULATORS & LUBRICATORS

Coilhose offers filters, regulators and lubricators to meet hundreds of application requirements. Our line included a full range of connection sizes, flow capacities, pressure ranges and filtration levels.



## MINIATURE SERIES

This series is designed for applications where space is limited and flow requirements are low. The units are ideal for control panels and miniature circuitry and each unit can be disassembled by hand.



## 26 SERIES

The 26 Series offers a great balance of compact size and optimum flow. This series is perfect for applications where performance, small size and Low cost are important. Regulators can be configured with gauges, different pressures ranges and mounting options. The filters and lubricators can be configured with metal bowls and filtration levels.



## 27 SERIES

The 27 Series is engineered to provide exceptional design and installation flexibility. Regulators have a multitude of pressure and gauge options. The filters and lubricators can be configured with metal bowls and various filtration levels.



## 29 SERIES

The 29 Series is made from lightweight aluminum bodies which lend themselves to a variety of applications. The modular design of the 29 Series allows for the installation and servicing of components without disturbing the plumbing surrounding it.



## GENERAL PURPOSE SERIES

This series offers a broad range of port sizes (1/4" to 2") for a reliable interchange with other manufacturers. The units are manufactured with zinc die cast bodies and are available with plastic bowls with guards or metal bowls.



# FILTERS, REGULATORS & LUBRICATORS



## HEAVY DUTY 88 SERIES

These units have a long-established reputation for high quality and reliability. Sizes range from 1/4" to 1". Features Include die cast aluminum bodies and extra large filter elements. These FRLs are also easy to maintain.



## DESICCANT DRIERS

Desiccant Driers use chemical reactions to remove the smallest traces of moisture from compressed air systems. Less than 1 psi pressure drop and no power source required.

## IN-LINE SERIES

Coilhose's In-Line Series filters, regulators and lubricators are designed to increase air tool efficiency by providing filtration, regulation and lubrication right at the tool. These units are perfect for maintaining and protecting your tool investment.



## IN-LINE FILTERS

In-Line filters protect and extend the life of tools. These units are serviceable, can be easily cleaned and are lightweight and compact so they are ideal for point-of-use installation immediately upstream of air tools.



## IN-LINE PRESSURE REGULATORS (PRE-SET AND ADJUSTABLE)

These regulators are designed to protect intermittently-operated air tools against damage caused by over-pressurization. The Pre-Set model is preset at the factory for tamper-proof operation. The Adjustable model allows the user to select a desired pressure and lock the setting in place.



## IN-LINE LUBRICATORS

These lubricators provide at-the-tool lubrication to keep tools running at peak efficiency. These units are an effective alternative to larger, more costly models that may not deliver adequate lubricant to the tool due to excessive line length. A filtration screen prevents line debris from contaminating oil.

# COUPLERS & CONNECTORS



## COILFLOW™ SIX BALL COUPLERS

The Coilflow Six Ball Couplers feature six stainless steel locking balls to provide a more precise and secure connection. The larger contact area provided by the six balls allows for minimal movement between the coupler and the connector. This configuration provides a more durable coupler, even in high vibration conditions. Available in Manual and Automatic.

## COILFLOW™ MANUAL COUPLERS

The Coilflow couplers are engineered to connect to all connectors of a matching interchange. They are composed of brass or plated steel.

Female Thread

Male Thread

Lock-On Hose Barb

Hose Barb



## COILFLOW™ AUTOMATIC COUPLERS

The Coilflow Automatic Couplers allow for easy one handed connecting and disconnecting. They feature a rugged brass body, and are compatible with all connectors of the same interchange.

## BALL SWIVEL CONNECTORS

When installed in a tool, the Ball Swivel Connectors allow for a larger range of motion and less fatigue on the user. These fittings also feature steel ball and socket construction which prevents galling and ensures a long service life. These units are available with Industrial, Automotive, Aro and Megaflo™ Interchange connector ends.



## MEGAFLOW™ SERIES

This series is engineered to allow twice the flow of comparably-sized standard design couplers and connectors. Couplers feature a one-handed push-to-connect design. Ball swivels and composite couplers are also available in this series.

# COUPLERS & CONNECTORS

## 5-IN-1 SAFETY EXHAUST COUPLER

The 5-in-1 allows for one coupler to connect to five interchanges. Designed to disconnect under zero pressure, this coupler avoids the dangerous and dreaded rush of air and whipping hose.

Note: In 3/8" and 1/2" body sizes, the Safety Exhaust Coupler works ONLY with the Industrial and Automotive Interchanges.



## CONNECTORS

Complete selection of Interchanges and sizes available



Industrial



Automotive



(Tru-Flate) Aro



Euro (Megaflow)



Lincoln



## STRAIGHT THROUGH SERIES

These couplers and connectors contain no internal valving that reduce flow through the connection. Ideal for fluid transfer lines and carpet cleaners.

## COMPOSITE COUPLERS

These non-marring couplers are manufactured out of a heavy-duty, high-impact fiberglass composite, which protects finished surfaces from scratching and marring. Available in three varieties: Industrial, Safety Industrial and Megaflow™.



## MICRO SERIES

These miniature quick disconnects are ideal for applications where space is limited, such as instrumentation, laboratory, chemical, medical and miniature pneumatics. Available in valved or straight through configurations.

# FITTINGS

## COILOCK™ PUSH-TO-CONNECT FITTINGS

COILOCK Push-To-Connect fittings are designed to be used with our plastic tubing products, including polyurethane, Nylon and Polyethylene.



## BRASS HOSE FITTINGS

Coilhose brass fittings are manufactured to exacting tolerances and strict quality control standards. Made of heavy duty, solid brass barb fittings with property crimped ferrules or clamps can be used with Flexeel, nitrile rubber and thermoplastic hose.

## NYLON HOSE FITTINGS

Coilhose Nylon Hose Fittings are designed for use with our Nylon Self-Storing Hose. Nylon Reusable Fittings are great for in-the-field repairs.



## BALL SWIVEL FITTINGS

Ball Swivel Fittings are used between the tool and air supply hose to eliminate kinking and twisting. Ball Swivels provide a more natural range of motion than the “traditional” air tool swivel fitting. Made of hardened steel with nickel-plated barbs.

## ORBITAL SWIVEL FITTINGS

Orbital Swivels have a 360° rotation capability, allowing users to easily maneuver air tools with minimal resistance. This freedom of movement reduces user fatigue and injury. Rotation points swivel with the hose to help eliminate kinks in the supply line. Orbital Swivels are made of brass and nickel plated for additional durability and corrosion resistance.



## BRASS PIPE FITTINGS

Coilhose Pneumatics high quality Brass Pipe Fittings are available in a wide variety of thread sizes and shapes to connect, adapt or control any air or water line. They are designed for use with brass, copper or iron pipe.

# LUBRICANT, CLEANER & OIL

## AIR TOOL LUBRICANT

Our Air Tool Lubricant is a specially formulated ISO 46 lubricant, which prolongs the life of air tools, cylinders and accessories, while allowing maximum performance. Our lubricant formulation inhibits the formation of rust, and is non-detergent, noncorrosive, nonreactive and stable (non-decomposing).



## AIR TOOL LUBRICANT WINTERGRADE

While many air tool lubricants quit working below freezing temperatures, Coilhose ATLW provides lubrication down to  $-45^{\circ}$  F. ATLW Anti-Freeze Lubricant can be applied via conventional air line lubricators or directly into the air tool's air inlet port.

## AIR TOOL CLEANER

Coilhose ATC is a specially formulated lubricant that restores high performance levels to "clogged" tools and allows "sluggish" tools to operate at peak efficiency.



## AIR COMPRESSOR OIL

Our compressor lubricant is a non-detergent naphthenic based rust and oxidation inhibited product for reciprocating (piston type) air compressor lubrication. Air Compressor Oil also helps eliminate deposits that clog valves.

## MIST COOLANT

Mist Coolant is specially formulated to remove heat and reduce friction in metal cutting applications. Once in contact with the tool, the liquid dissipates excess heat. As water evaporates, lubricating elements remain to continue to protect and extend the life of your tools. Ready to use; no mixing required. Ideal for drilling, tapping and surface grinding applications.

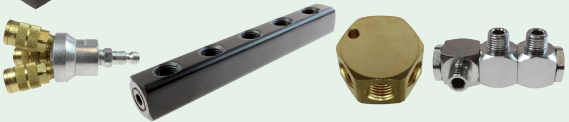


# AND MORE...



## MANIFOLDS AND MANIFOLD ASSEMBLIES

Manifolds and Manifold Assemblies provide the most effective and economical means of distributing pneumatic power to more than one location from a single source. They are an excellent alternative to running multiple hose or pipe lines.



## TOOL AND HOSE BALANCERS

Tool and Hose Balancers provide the operator with a neat, safe work area and prevent damage to tools. The Balancers feature a permanently lubricated precision mechanism and a removable adjusting key.

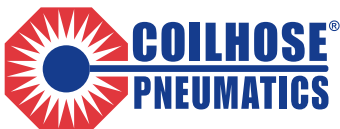


## AIR CHUCKS, TIRE INFLATORS AND PRESSURE GAUGES

Coilhose Pneumatics supplies many configurations of tire inflators, air chucks and pressure gauges to suit the needs of demanding professionals.



When you need  
**QUALITY PRODUCTS,**  
look for the  
Coilhose logo



***From the Compressor to the Air Tool,  
We Put it All Together!***

Coilhose Pneumatics leads the air tool accessory and air line control industry. From our FLEXEEL® reinforced hose to our TYPHOON® high volume safety blow guns, we continue to set the standard for innovation, convenience and safety. Our complete product line provided a total solution for every pneumatic challenge.

**You've got a job to do...**  
**COILHOSE PNEUMATICS**  
**makes it easy!**

Contact us for a local distributor.



East: 732-390-8480

West: 503-434-5964

[www.coilhose.com](http://www.coilhose.com)