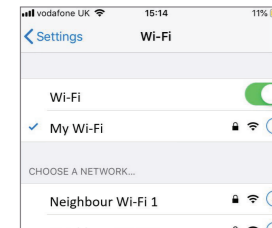


## 1. Connect to your WiFi network

Connect your phone to the WiFi network that you wish your WiFi Smart plug to use.



**IMPORTANT** On Android you may also need to temporarily disable mobile data while setting up your WiFi Smart Plug.

## 2. Download the Energenie MiHome app

Either:



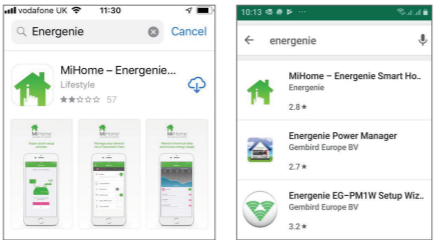
Scan this QR Code using your phone's camera

OR



Visit the app store on your phone and search **Energenie**

The app will look like this in the iOS app store or the Google Play store:

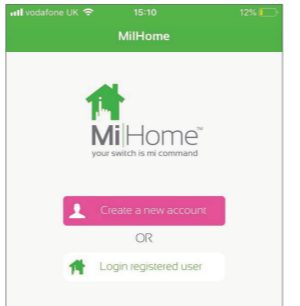


iOS

Android

Download it to your phone

## 3. Open the Energenie MiHome app



Open the app and create a new account, or log in to an existing account.

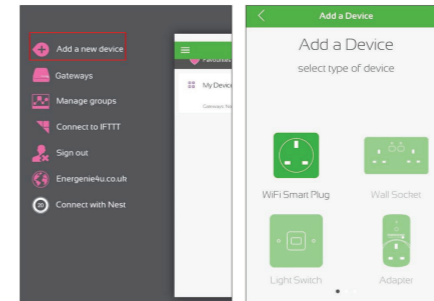
## 4. Start pairing your WiFi Smart Plug

If you are new to Energenie MiHome you will see this welcome screen:



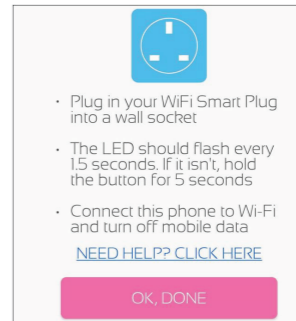
Select '**Setup WiFi Smart Adapter**'.

If you already have an account, choose '**Add a new device**' from the menu and select '**WiFi Smart Plug**'.



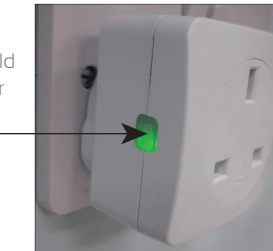
## 5. Follow the on-screen instructions

Following the on-screen instructions, you should plug your WiFi Smart Plug into a socket.



The green status LED should start flashing every 1½ seconds.

If it does not, press and hold the button for 5 seconds.

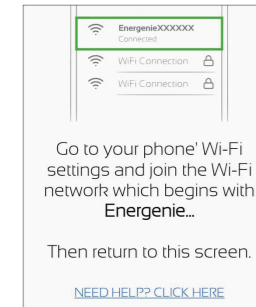


Then press the button on the app labelled '**OK done**'.

PTO →

## 6. Connect the WiFi Smart Plug to WiFi

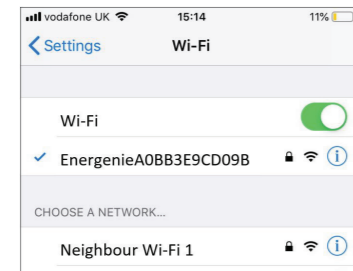
Following the on-screen instructions to connect to the WiFi Smart Plug's own network.



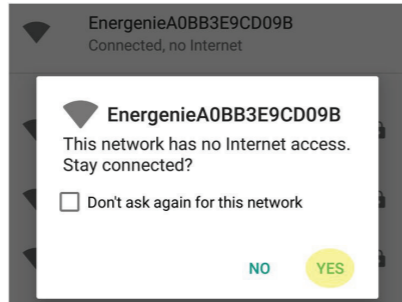
Navigate to your phone's Wi-Fi settings. On Android you will see this button to help you:



In your phone's settings, connect to the Wi-Fi network that starts with '**Energenie...**'



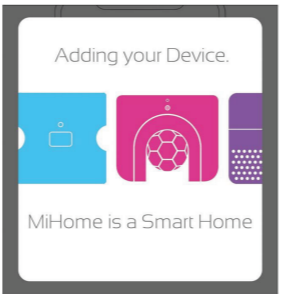
**IMPORTANT** On Android your phone may ask if you wish to stay connected.



If it does, choose '**Yes**'.

## 7. Return to the Energenie MiHome app

Return to the Energenie MiHome app. Pairing should start automatically. The green LED on the plug should stop flashing.



## 8. Name your new WiFi Smart Plug

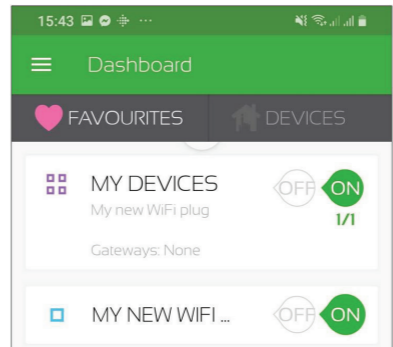
Give your plug a name and select '**Go To Dashboard**' to start controlling it.



Alternatively, select '**Add a New Device**' to pair another Energenie MiHome product.

## 9. Take control of your new Energenie MiHome Smart Plug!

Control your new plug from the dashboard using the **On** and **Off** buttons.



## Further Help

If you need help, try our troubleshooting guide [mihome4u.co.uk/miho109-troubleshooting](http://mihome4u.co.uk/miho109-troubleshooting)

You can find the full user manual on our website here: [energenie4u.co.uk/catalogue/product/MIHO109](http://energenie4u.co.uk/catalogue/product/MIHO109)

Our technical support team can also help you.

Contact us here: [energenie4u.co.uk/about\\_us/contact\\_us](http://energenie4u.co.uk/about_us/contact_us)

# MiHome WiFi Smart Plug Quick Start Guide

