



User Manual

Artist 12 Pro, 13.3 Pro & 15.6 Pro

Safety Precautions

This manual uses the following symbols to ensure that the XP-PEN Tablet is used correctly and safely. Be sure to read and observe the Safety Precautions.



Do not use this product in a control system area that requires a high degree of safety and reliability.

In such a system, this product could negatively affect other electronic devices and could malfunction due to the effect of those devices.



Turn the power off in areas where use of electronic devices is prohibited.

Turn the power off your tablet when onboard an aircraft or in any other location where use of electronic devices is prohibited, otherwise it may negatively affect other electronic devices in the area. Unplug the USB connector from this product and turn the power off.



Keep the product away from infants and young children.

Accessories to this gadget may present a choking hazard to small children. Keep all accessories away from infants and young children.



CAUTION

Do not place this product on unstable surfaces.

Avoid placing this product on unstable, tilted surfaces or any locations exposed to excessive vibrations. This may cause the tablet to fall or impact surfaces which can result in damage and/or malfunction to the tablet.

Do not place heavy objects on top of this product.

Do not place heavy objects on the product. Do not step on, or place your body weight on this product as this may cause damage.



Avoid extreme high or low-temperature exposure to the XP-Pen tablet.

Do not store this product in areas that drop below 5°C or above 40°C. Avoid locations with excessive temperature fluctuations. This may result in damage to the product and its components.



Do not disassemble

Do not disassemble or modify this product. Doing so may expose you to heat, fire, electric shock and injury. Disassembling the product will void your warranty.



Do not use alcohol for cleaning

Never use alcohol, thinner, benzene or other mineral solvents that may discolor and cause deterioration to the product.



Do not expose to water

Be cautious of water and all liquids that may be near the tablet. Exposure to water or liquid could damage the product.



CAUTION



Avoid placing metallic objects and especially magnetic objects on the tablet.

Placing metallic and/or magnetic objects on this product during operation may cause malfunction or permanent damage.



Do not strike the pen against hard objects.

Striking the pen against hard objects can cause damage to the pen.



Avoid gripping the pen too tightly, and DO NOT use excessive weight/pressure on the Express Key button and pen.

The stylus pen is a high-precision instrument. Avoid pressing too tightly on the Express Key button, and keep any objects from covering the pen to avoid potential damage. Keep the pen away from areas of high dust, contaminants, or any particulate matter that can effect or damage the pen.

Limitation of Liability

1. XP-Pen shall in no event be liable for damages resulting from fires or earthquakes, including those caused by third parties and those arising from user misuse, abuse or neglect.
2. XP- Pen shall in no event be liable for incidental damages- including but not limited to loss of business income, interruption of business activities, corruption or loss of data – that arise from use or failure to use this product correctly.
3. XP- Pen shall in no event be liable for damage resulting from uses not documented in this manual.
4. XP- Pen shall in no event be liable for damages or malfunction arising from the connection to other devices or use of third party software.

Contents

[I. Product Overview](#)
[Overview](#)

[II. Connecting the Artist 12 Pro, 13.3 Pro & 15.6 Pro](#)

[III. Driver Installation](#)
[Windows](#)
[Mac](#)

[IV. Driver Settings UI](#)
[Windows](#)
[Mac](#)

[V. Driver Uninstall](#)
[Windows](#)
[Mac](#)

[VI. FAQ](#)

Thank you for purchasing the XP-Pen Artist 12 Pro, 13.3 Pro & 15.6 Pro. Our product user manual currently supports English, Russian, Japanese, German, Korean, Chinese, Italian, Spanish, and French. We apologize if your preferred language is not supported.

{ I. Product Overview }

Overview

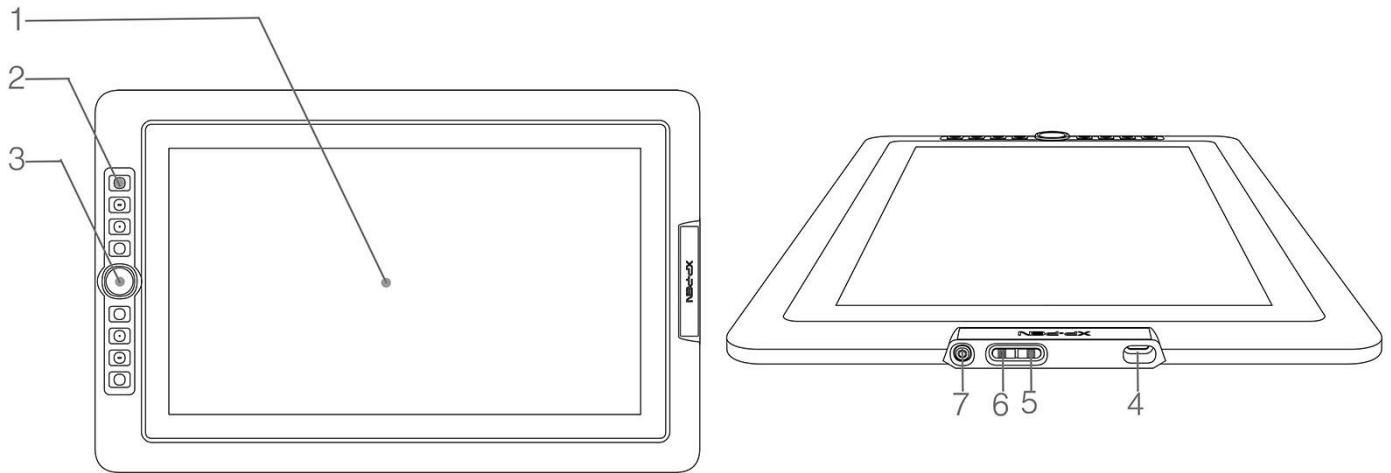


Image 1-1. Overview

- (1). Display/Working area
- (2). Express keys
- (3). Roller key
- (4). USB port
- (5). Brightness up
- (6). Brightness down
- (7). Status indicator light
 - a. Blue: The Artist 12 Pro, 13.3 Pro & 15.6 Pro is connected to your computer and powered on.
 - b. No Light: The Artist 12 Pro, 13.3 Pro & 15.6 Pro is powered off.

{ II.Connecting the Artist 12 Pro, 13.3 Pro & 15.6 Pro }

- 1.Connect to the internet.
- 2.Close any open applications.
- 3.Connect the Artist 12 Pro, 13.3 Pro & 15.6 Pro to your computer, using one of either of the two methods below:
 - a. Plug the USB cable into the Artist 12 Pro, 13.3 Pro & 15.6 Pro first and then connect the HDMI and black and red USB cords into your computer.

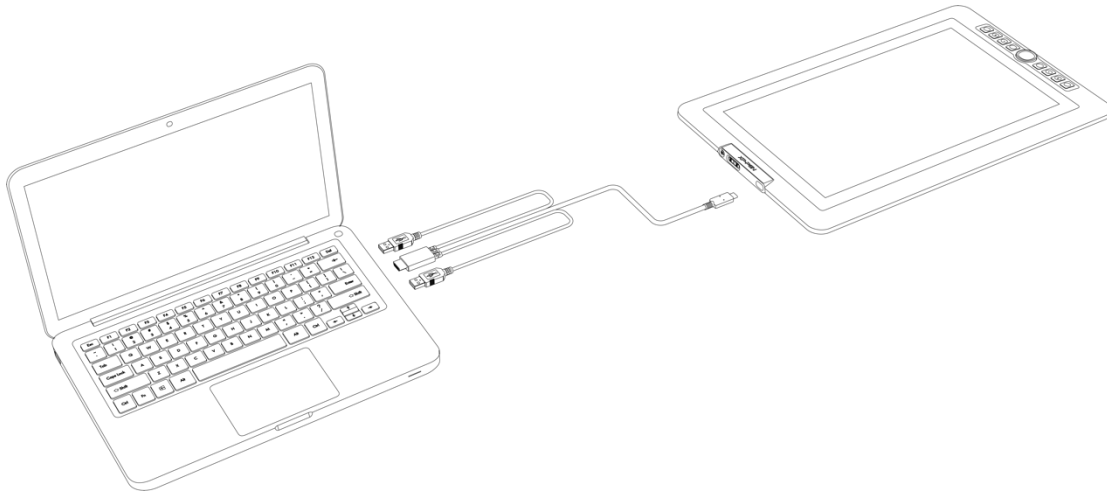


Image 2-1. Connection

- b. Plug USB cable into Artist 12 Pro, 13.3 Pro & 15.6 Pro first, then connect the HDMI and black USB cords into the computer. Plug the red USB cord into the extender cable, USB adapter, and wall outlet.

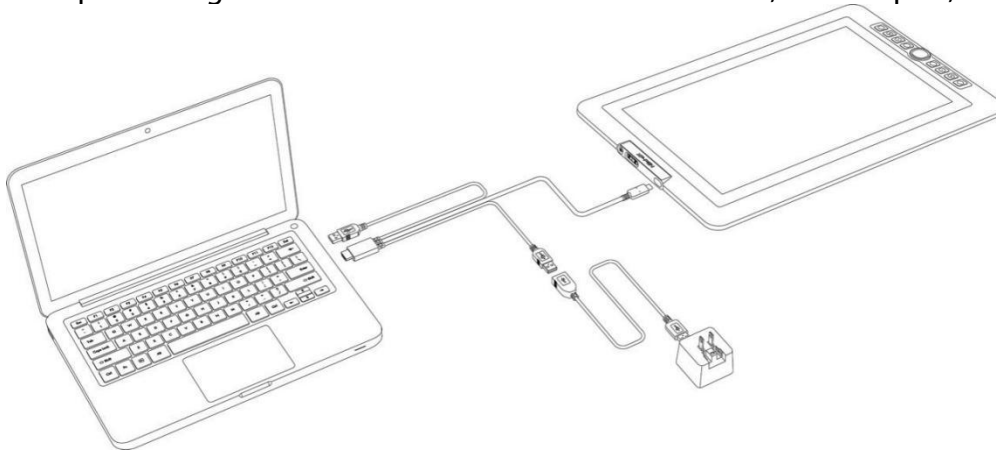


Image 2-2. Connection

Notes:

- a. Do not use a type-C to type-C USB cable to connect the Artist 12 Pro, 13.3 Pro & 15.6 Pro.
- b. If your computer is a desktop, please connect the Artist 12 Pro, 13.3 Pro & 15.6 Pro HDMI cable into the same video card as your general monitor.

{ III. Driver Installation }

Supported operating systems:


Windows 10, 8 or 7

Mac OS X 10.10 or above

NOTES :

- (1). Disable any antivirus or firewall software and close any non-essential background software before beginning the installation. Some software, such as OneDrive and Dropbox, may monopolize important files and prevent a successful installation. On Windows computers, check the system tray on the bottom-right of the screen and close any software unrelated to your computer hardware.
- (2). Uninstall any existing tablet software before attempting to install the Artist 12 Pro, 13.3 Pro & 15.6 Pro driver. Other tablet drivers may conflict with the Artist 12 Pro, 13.3 Pro & 15.6 Pro driver or prevent installation entirely.
- (3). Visit the XP-Pen official website and then download and install the latest driver for your tablet. When download complete, be sure to extract the ".zip" file contents before running ".exe" or ".pkg."
- (4). The Artist 12 Pro, 13.3 Pro & 15.6 Pro resolution size is 1920x1080 (max).

Windows

1. Connect the Artist 12 Pro, 13.3 Pro & 15.6 Pro to your computer as per the diagram on p. 4
 2. Visit the XP-Pen website - <https://www.xp-pen.com/download/index/id/65.html> and download the most recent driver release for your tablet model.
 3. Once the zip file is downloaded, please open your Downloads folder and find the zip file.
 4. Open that zip folder - You should see a folder inside with the same name as the zip file.
 5. Extract that folder from within the zip folder onto your desktop by left clicking and dragging it from the zip folder and onto your desktop.
 - a. It is very important that file is extracted to the desktop or else the program will not install properly.
 6. Open the extracted folder by double clicking, right click the .exe file found inside, and choose "Run as Administrator". When the system prompts you if you want to allow this file to make changes select "Yes"
 7. Follow the prompts from the installation program to install the driver.
 8. When the driver has finished installing, restart your computer
 9. After a successful installation, the driver's icon () will appear in your system tray. If the icon is not present, uninstall the driver, reboot, and repeat step 2.
- Right click your desktop and choose "Display Settings." Set monitor's "Size to text, apps, etc." to 100%.

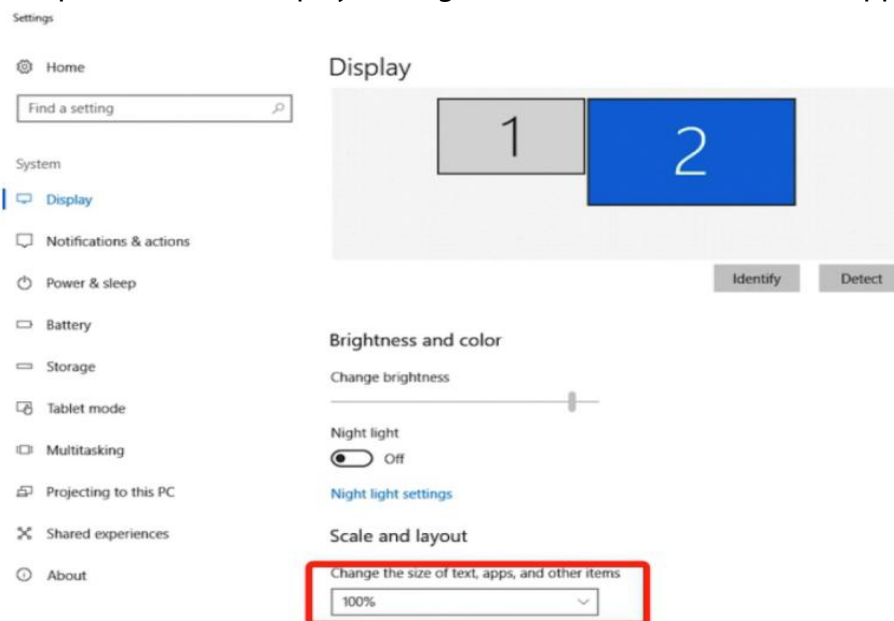


Image 3-1. Text

1. On the display setting, you can set your monitors to “Extend these displays” or “Duplicate these displays”.
2. In Extend mode, set your Artist 12 Pro, 13.3 Pro & 15.6 Pro to monitor 2 and choose a resolution of 1920x1080.
3. In Duplicate mode, set both of your monitors to the same resolutions.

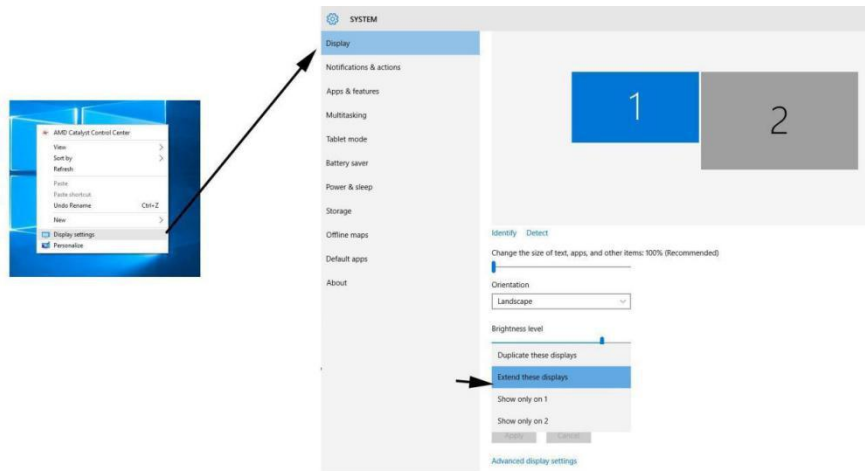


Image 3-2. Display setting

4. Click OK button to exit.
5. Double-click the tablet driver’s system tray icon to open your tablet settings. Set your Artist 12 Pro, 13.3 Pro & 15.6 Pro’s “Current Screen” to Monitor 2, then click Apply and exit.

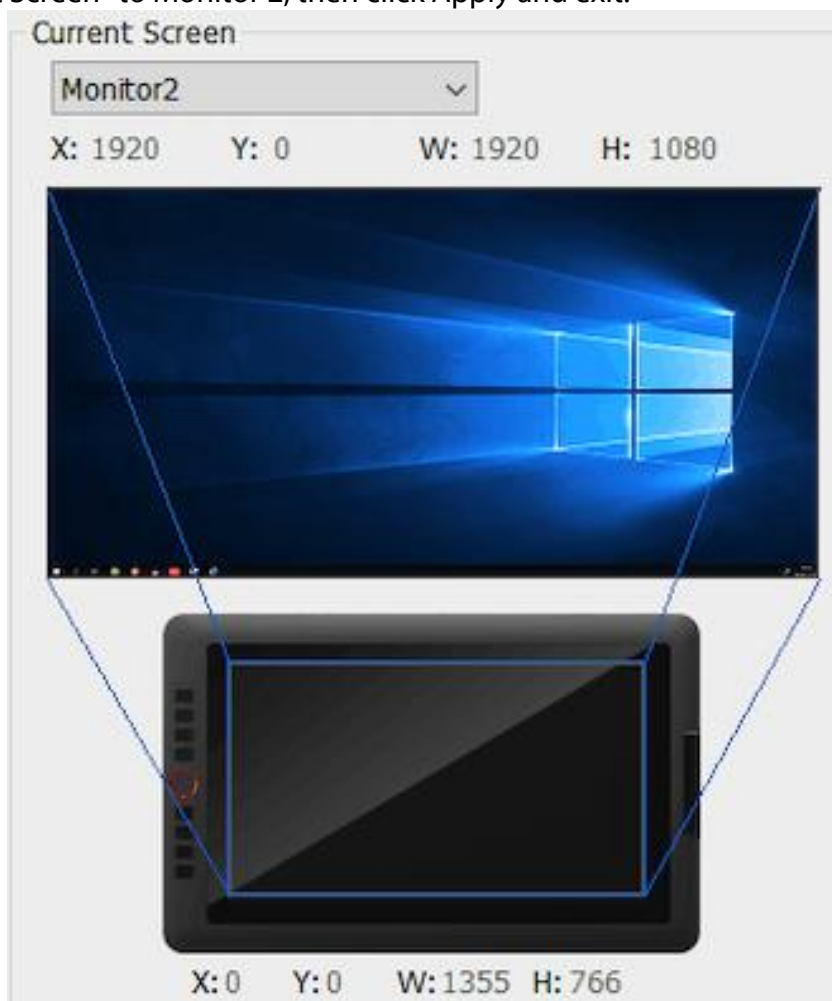


Image 3-3. Current Screen

Mac

1. Plug USB cable into Artist 12 Pro, 13.3 Pro & 15.6 Pro first then connects HDMI and USB codes (Black & Red) into your computer.
2. Download the latest driver version from the XP-Pen website and be sure to extract the “.zip” file contents onto your desktop before running “.pkg”.



Image 3-4. Mac driver

3. Follow the on-screen instructions until complete.
4. Open “System preferences” – “Display” then set Resolutions to “Default for display”.

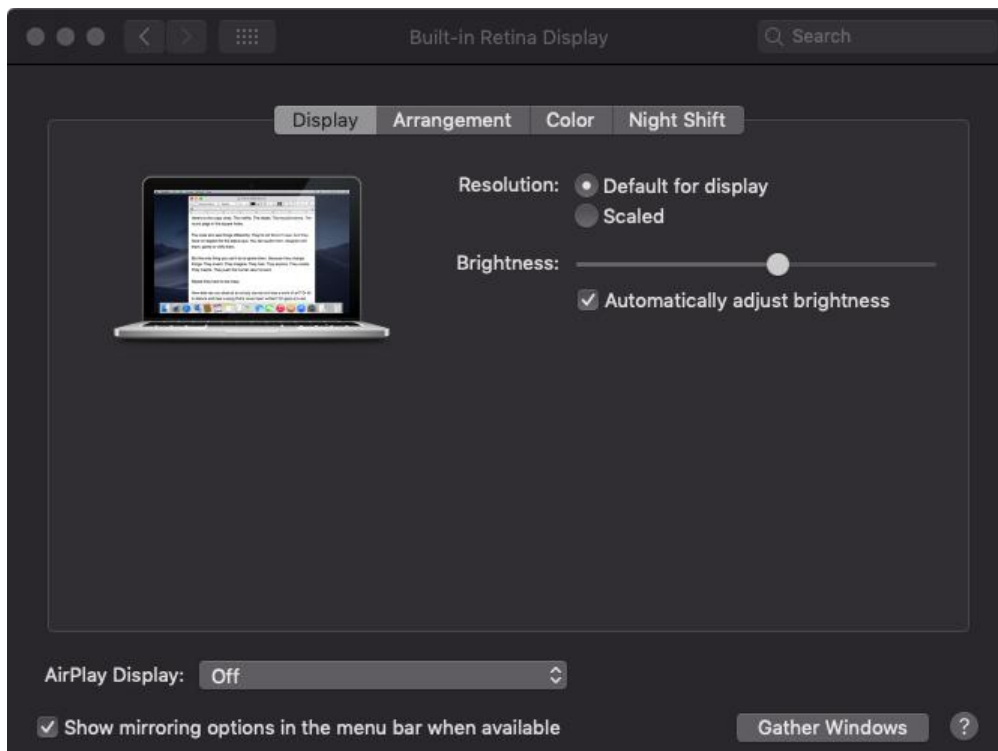


Image 3-5. Display

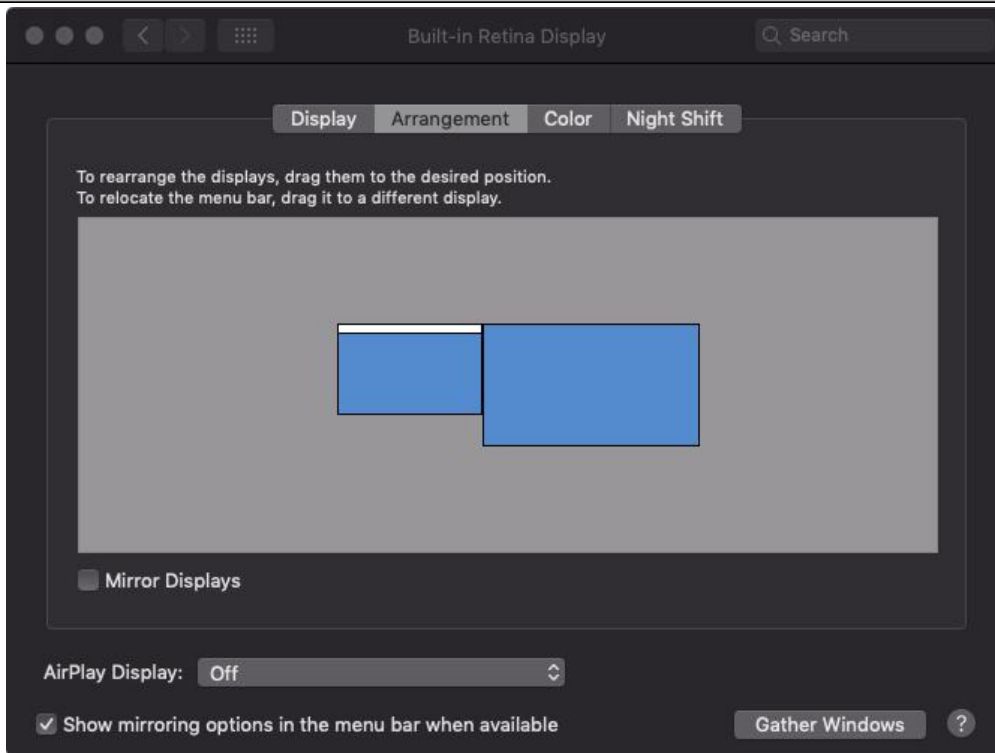


Image 3-6. Arrangement

5. In the Arrangement tab, you may choose to Mirror Displays. With Mirror Displays enabled, both monitors' resolutions should be the same.
 - (5.1) Open "Finder" – "Applications" – "PenTable" – "Pen Tablet Setting".
 - (5.2) In the Monitor tab, set Monitor Mapping to iMac/Color LCD.
6. With Mirror Displays disabled, set your Artist 12 Pro, 13.3 Pro & 15.6 Pro's resolution to 1920x1080.
 - (6.1) Open "Finder" – "Applications" – "PenTable" – "Pen Tablet Setting".
 - (6.2) In the monitor tab, set Monitor Mapping to Artist 12 Pro, 13.3 Pro & 15.6 Pro.

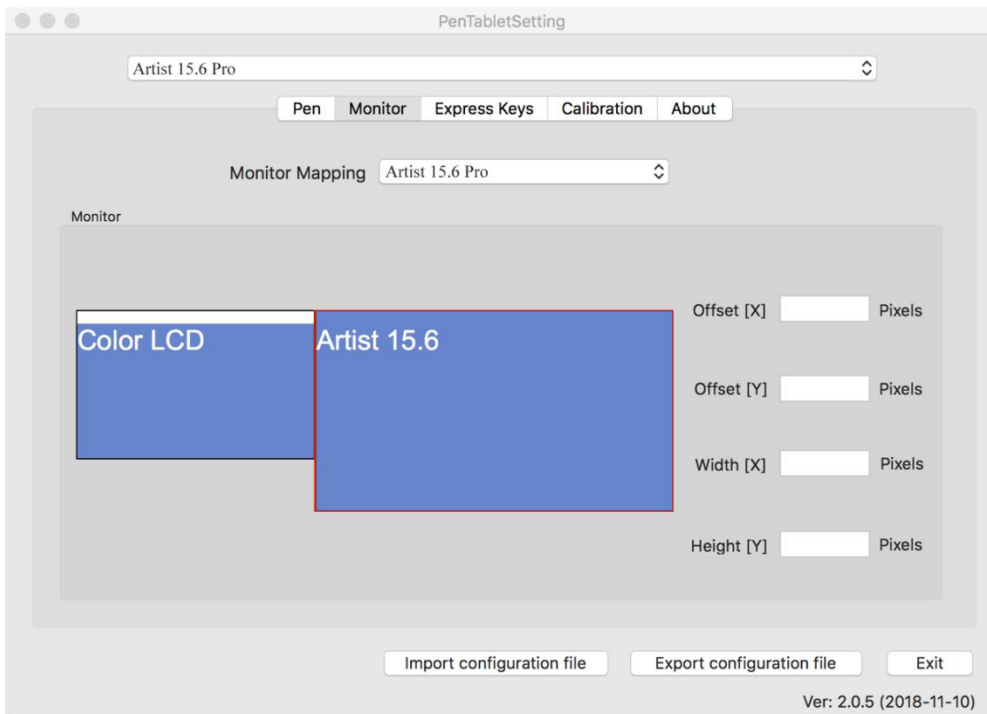



Image 3-7. Monitor

{ IV. Driver Settings UI }

Windows

Double-click the driver's icon () in the system tray.

Driver UI

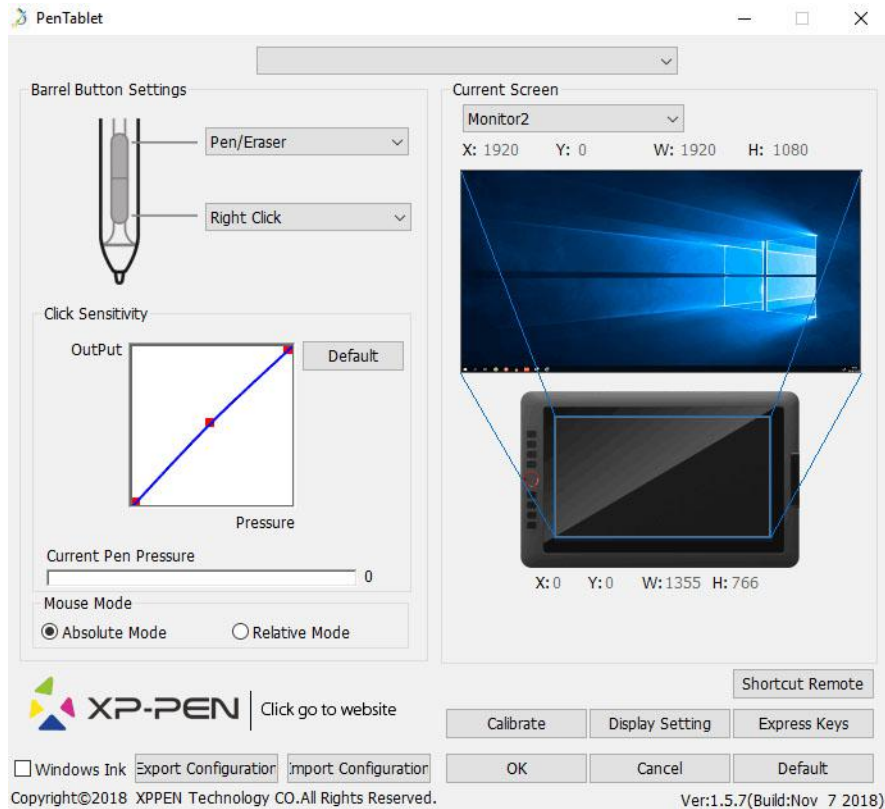


Image 4-1. Image 4-1. UI

1.1. Pen Function Settings

You may customize the functions of your tablet pen's barrel buttons here. Use the "Function Key" option to program custom keystrokes.

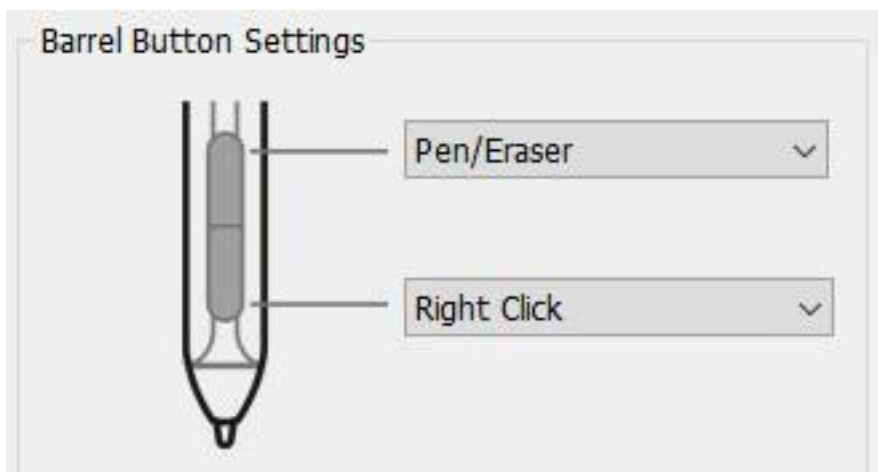


Image 4-2. Pen Functions Setting

Note:

Pen/Eraser Toggle

With the stylus in range of the Artist12 Pro, 13.3 Pro & 15.6 Pro's working area, press the assigned barrel button to toggle between pen and eraser modes in compatible drawing software. The current mode will be displayed briefly on your monitor.

1.2. Click Sensitivity & Current Pen Pressure

You can adjust pen pressure to “Output” or “Press” sensitivity on here.

Current Pen Pressure shows the current pressure level being exerted on your tablet and can be used to test pen pressure.

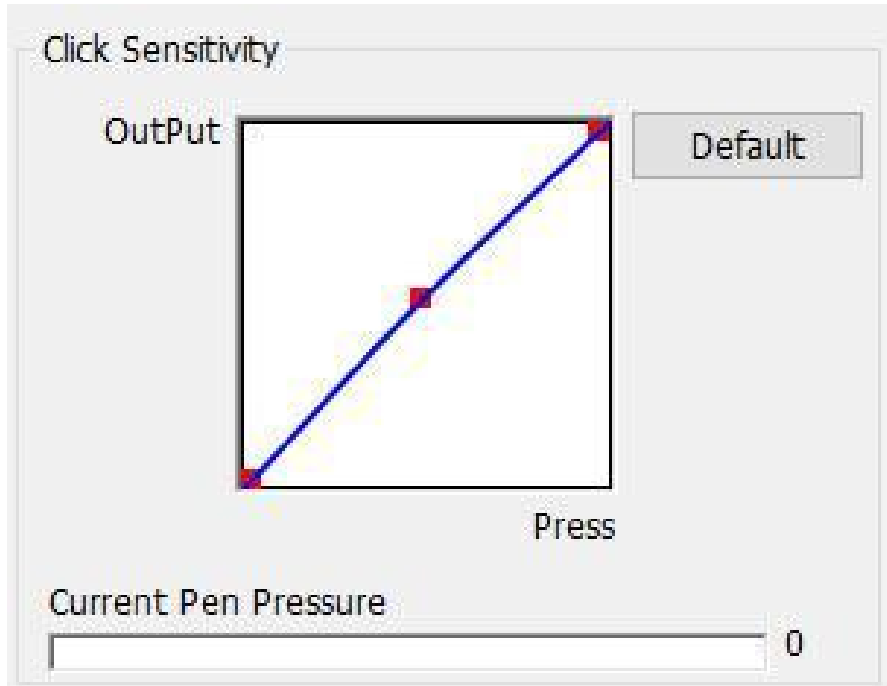


Image 4-3. Click Sensitivity & Current Pen Pressure

1.3. Mouse Mode

Absolute (Pen) Mode: Standard tablet mode; Each point of the tablet’s work area corresponds to an absolute point on your computer display.

Relative (Mouse) Mode: Mouse mode; The tablet’s work area does not correspond to absolute points on your computer display and your pen works as a standard mouse.

Note:

Artist 12 Pro, 13.3 Pro & 15.6 Pro is a graphic tablet monitor so please set it to Absolute mode to avoid stylus and cursor offset issue.



Image 4-4. Mouse Mode

1.4. Current Screen

The Artist 12 Pro, 13.3 Pro & 15.6 Pro may be configured for use with single or dual monitors. Generally, this should be set to “Monitor 1” or “Monitor 2.”

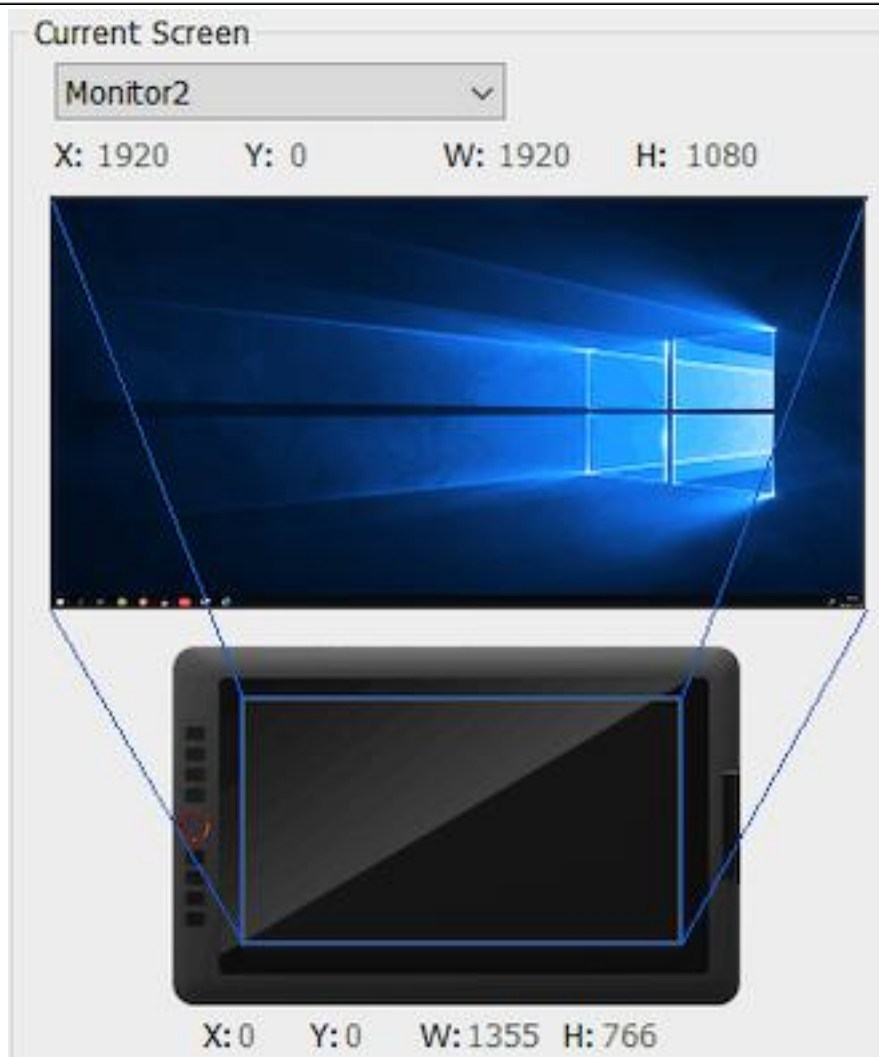


Image 4-5. Current Screen

1.5. Windows Ink

This capability can be toggled on and off here. Enabling this will allow support for Windows Ink and applications that run using Windows Ink.



Image 4-6. Windows Ink

1.6. Import & Export Profiles



Image 4-7. Export & Import

You can use the Import & Export Profile function to save/load your barrel buttons and shortcut keys setting.

Note:

When you finish setting up your barrel buttons and shortcut keys, click the OK button to save and exit the tablet settings menu. Open tablet setting again and click Export Configuration.

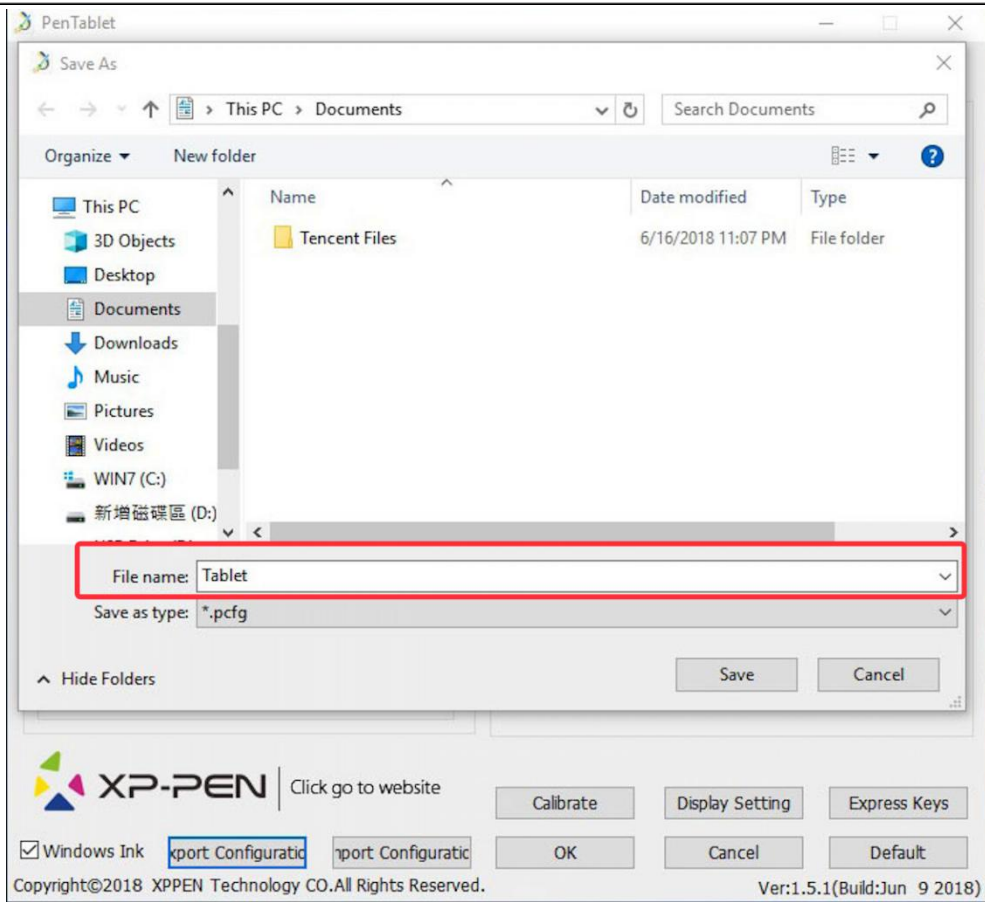


Image 4-8. Export Profile

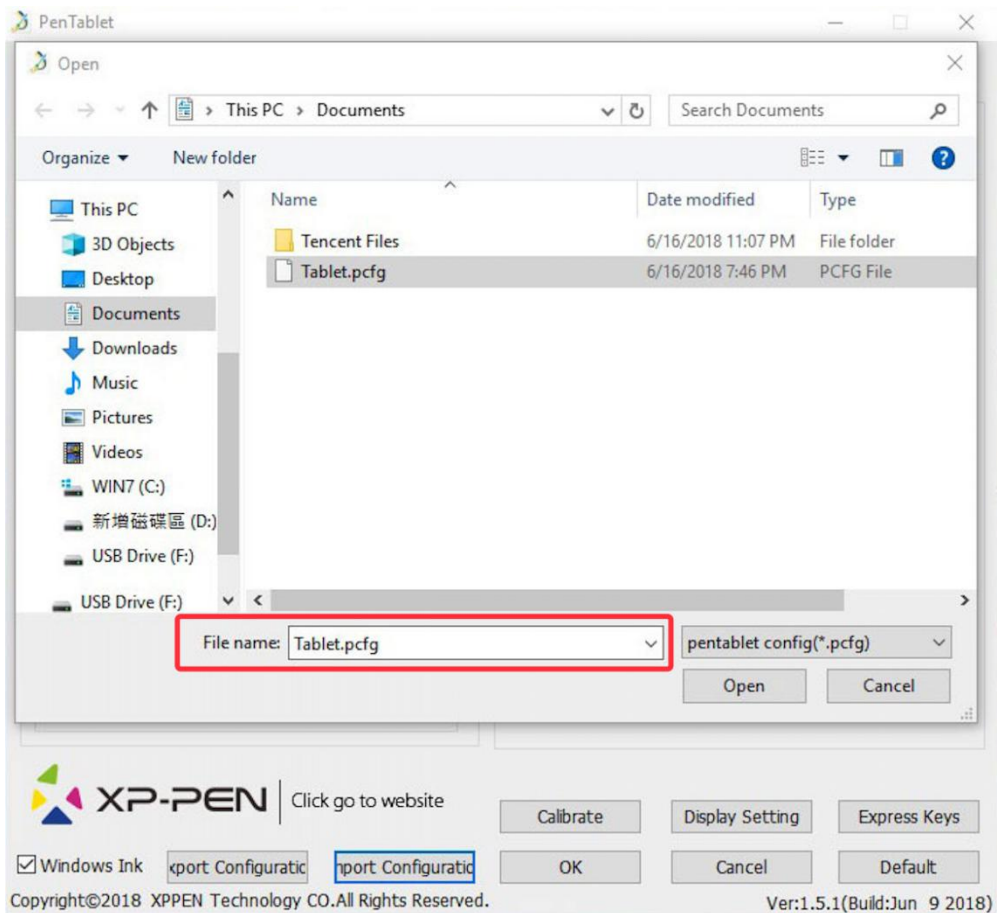


Image 4-9. Import Profile

1.7. Calibration

The Calibration tab allows you to set up calibration for your tablet.

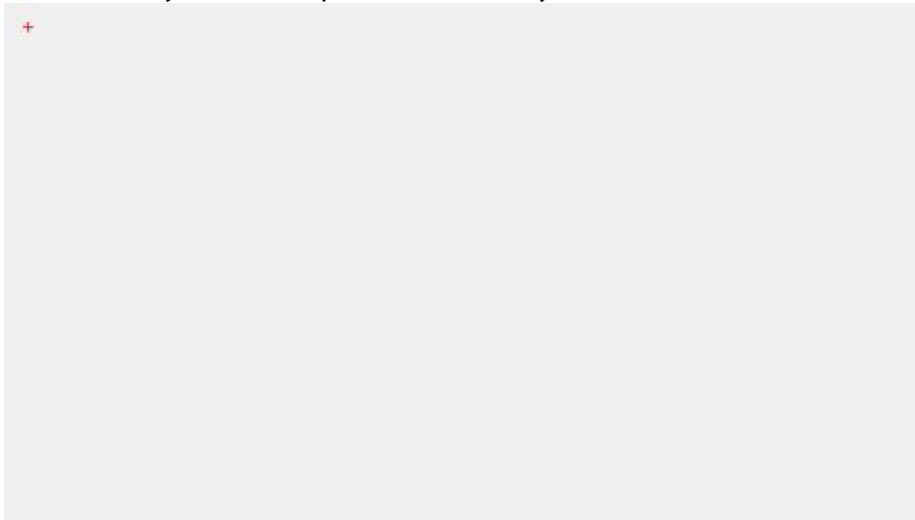


Image 4-10. Calibration

1.8. Display Setting

- Color Temperature: Use to adjust the Artist 12 Pro, 13.3 Pro & 15.6 Pro's color balance.
- User: Use to adjust red, green, and blue color levels on the Artist 12 Pro, 13.3 Pro & 15.6 Pro's display. Brightness and contrast can also be adjusted here.
- Rotate: You may rotate the Artist 12 Pro, 13.3 Pro & 15.6 Pro's display in this tab.

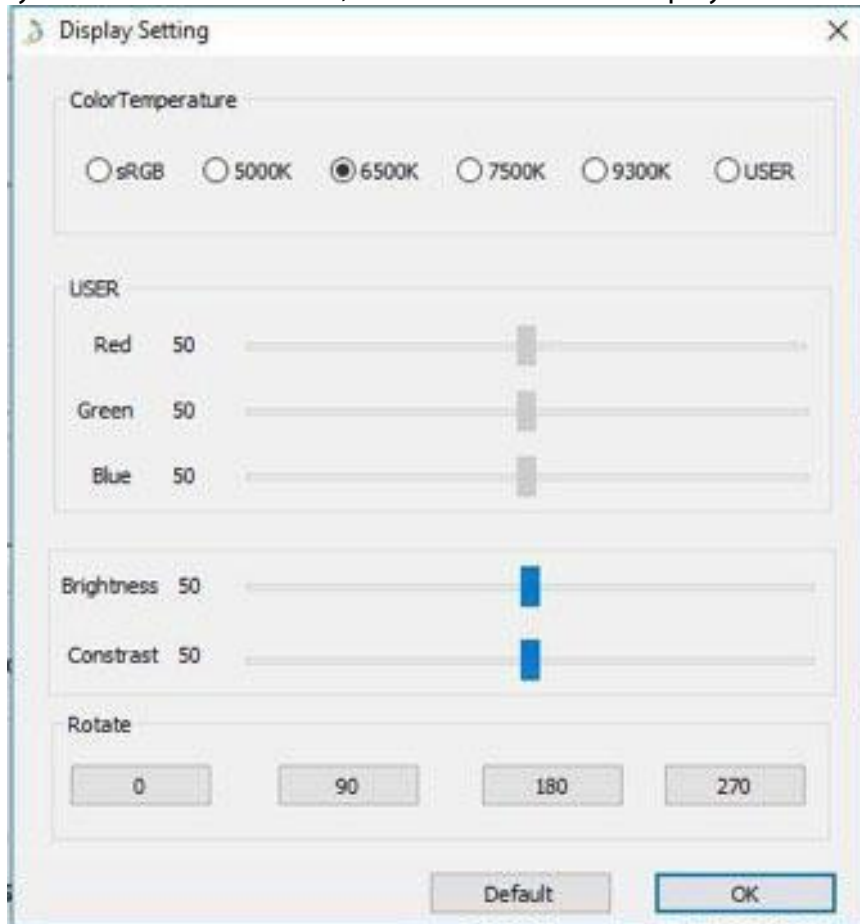


Image 4-11. Display Setting

Note:

- When you set the rotate function, you must also rotate your Artist 12 Pro, 13.3 Pro & 15.6 Pro.
- You must set the Artist 12 Pro, 13.3 Pro & 15.6 Pro to Extend These Displays first, after which you can change the rotation.

1.9. Express Keys Setting

Notes:

- (a). The Artist 12 Pro, 13.3 Pro & 15.6 Pro's shortcut keys are designed to work with US English keyboards. Keys may not function correctly with the other keyboard languages.
- (b). By default, the Artist 12 Pro, 13.3 Pro & 15.6 Pro express keys are mapped to standard Photoshop keyboard shortcuts. Keys can be customized to function efficiently in other software.
- (c). You must set one express key from the Switch function to switch dial.

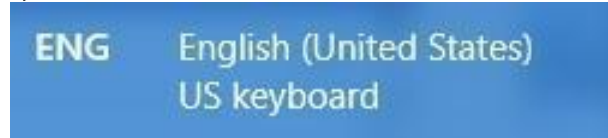


Image 4-12. Keyboard

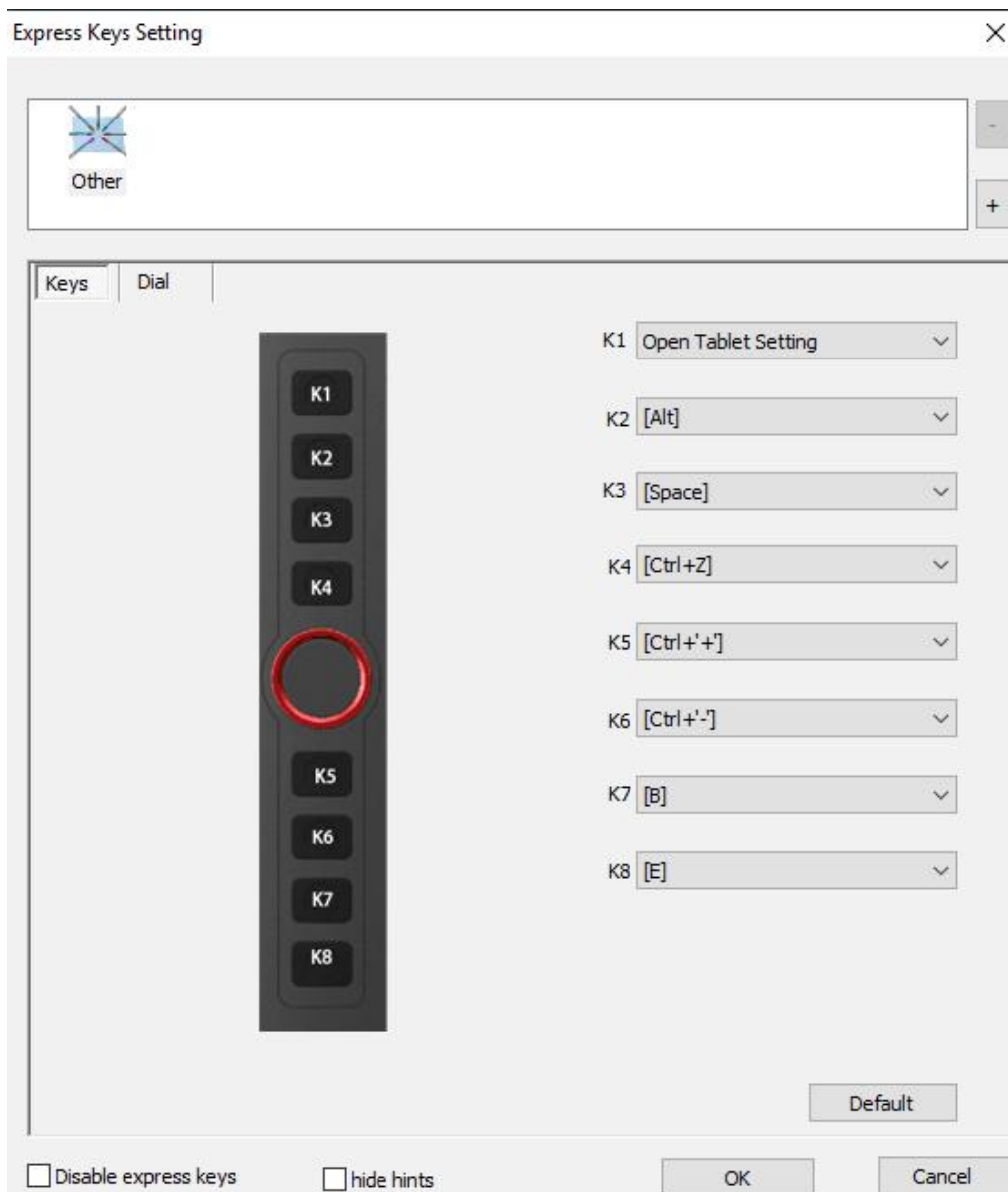


Image 4-13. Keys

You may edit the functions of the Artist 12 Pro, 13.3 Pro & 15.6 Pro's shortcut keys. Use the "Definition" option to program custom keystrokes.

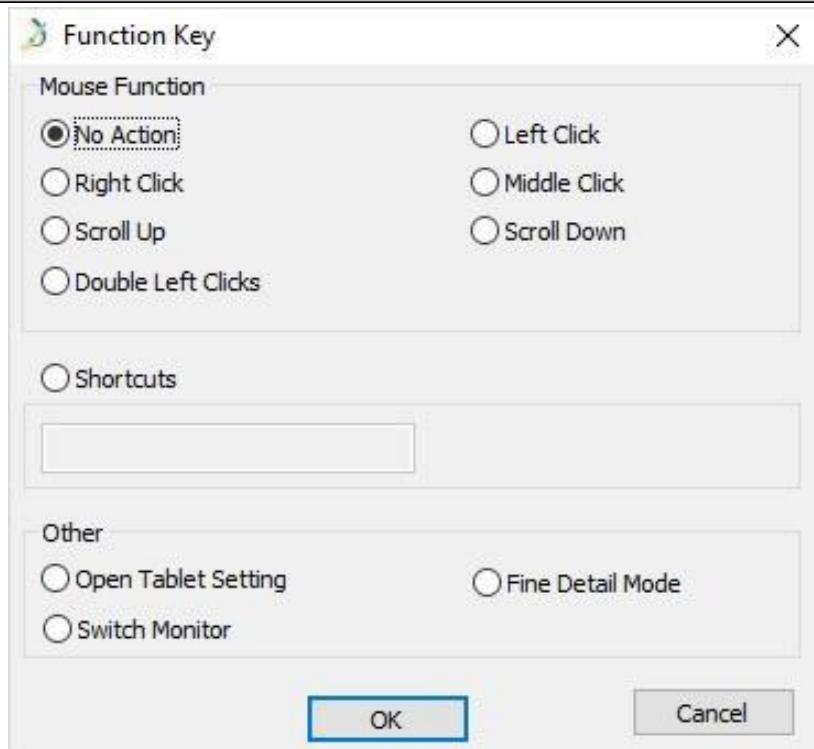


Image 4-14. Function Key

Note:

Find Detail Mode allow your Artist 12 Pro, 13.3 Pro & 15.6 Pro work area focus on the small size scope to do detail drawing & editing.

You can set each shortcut key for different software.

a. Click the “+” button to go to Select Program tab.

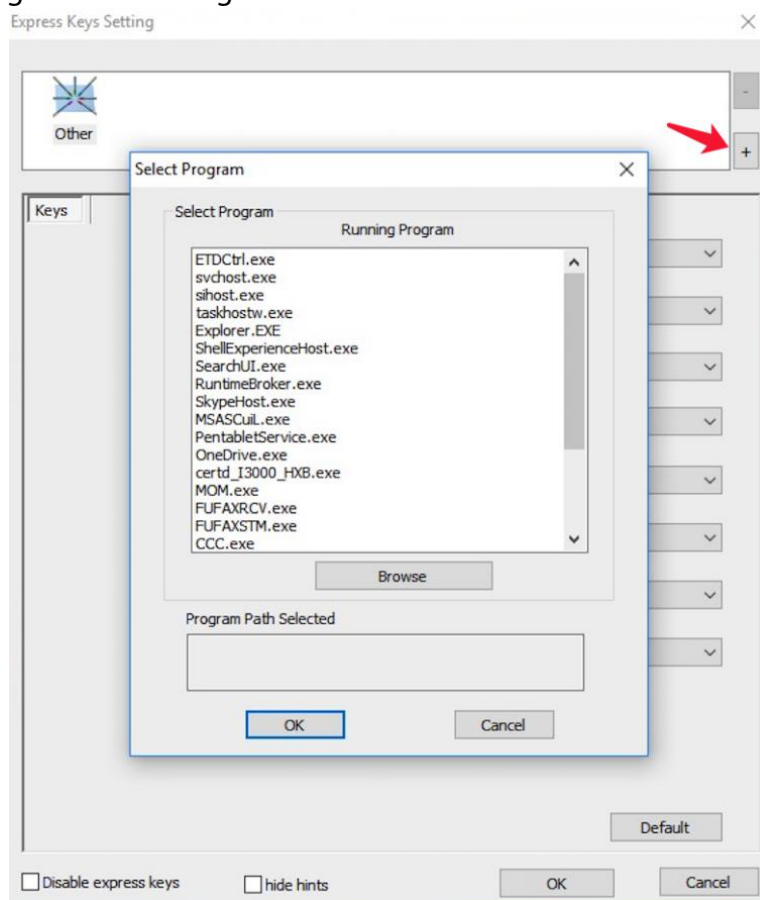


Image 4-15. Select Program

b. You can choose Default or use Browse to select your choice of software.

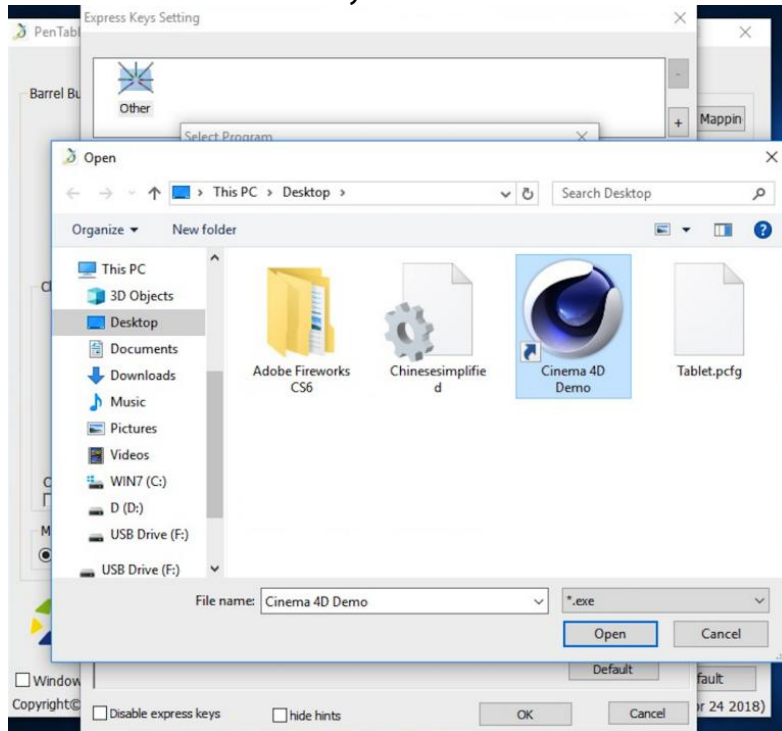


Image 4-16. Select Program

c. Return to the shortcut key settings tab, click the tablet icon, and then customize the shortcut keys. When you are finished, click the OK button and exit the tablet settings menu.

You can set each dial for different software.

a. Click software icon first then go to Dial tab.

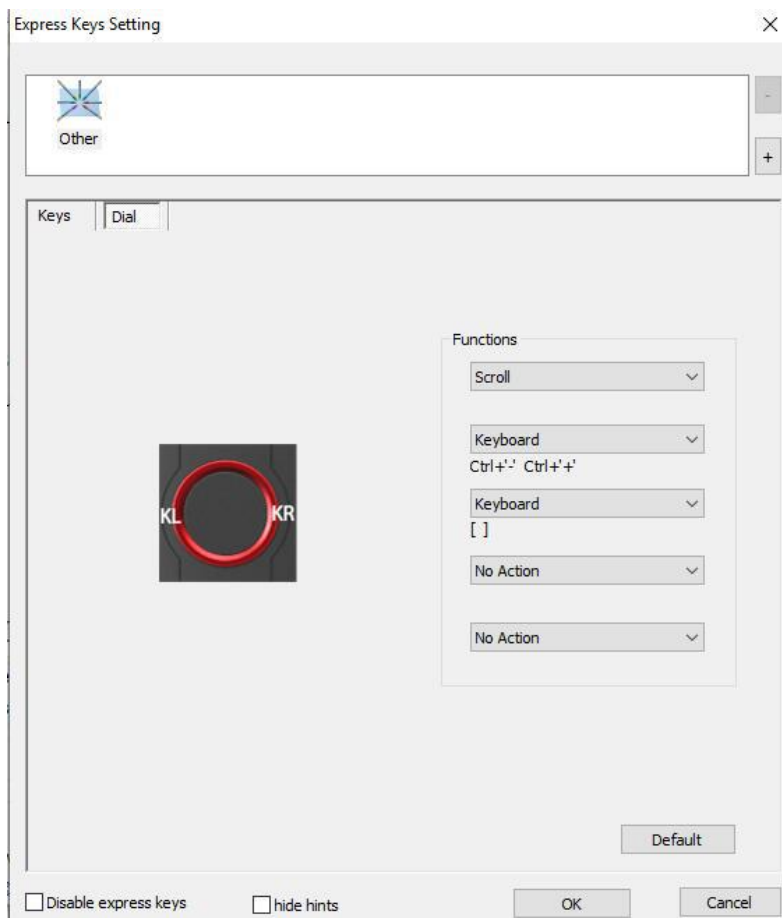


Image 4-17. Dial

b. Click each dial function to "Function key".

c. On the setting tab, you can customize "KL" and "KR" to different shortcuts like Ctrl+ & Ctrl-.

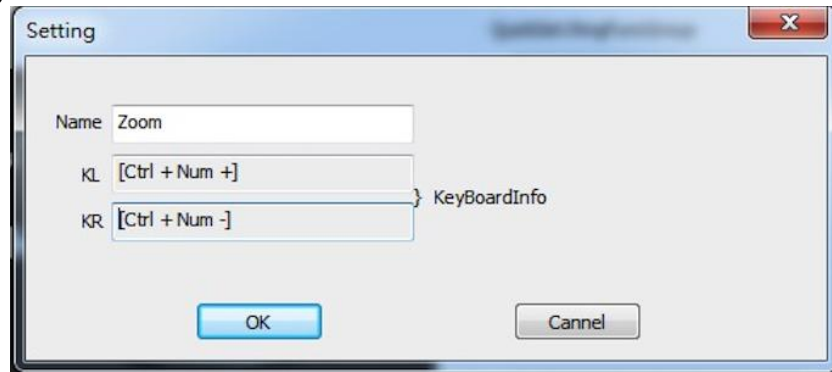


Image 4-18. Setting

1.10. Default

You can click the Default button to restore default settings.

1.11. XP-Pen Logo

Click our logo to visit our website.



Image 4-19. XP-Pen logo

Mac

To open the Artist 12 Pro, 13.3 Pro & 15.6 Pro's driver settings, open Finder - Applications - PenTabletSetting.



Image 4-20. Tablet Setting

1.1. Pen

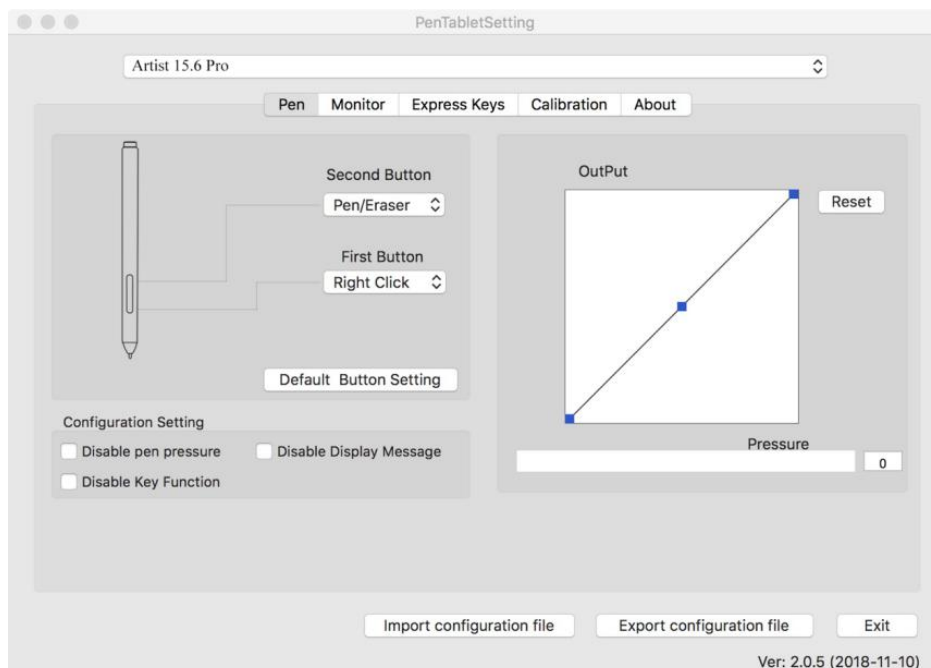


Image 4-21. Mac UI
1 7

- a. In this tab, you may customize the functions of your stylus's barrel buttons, adjust pressure sensitivity, and test your pen pressure.
- b. Click "Default Button Setting" to revert to manufacturer settings.

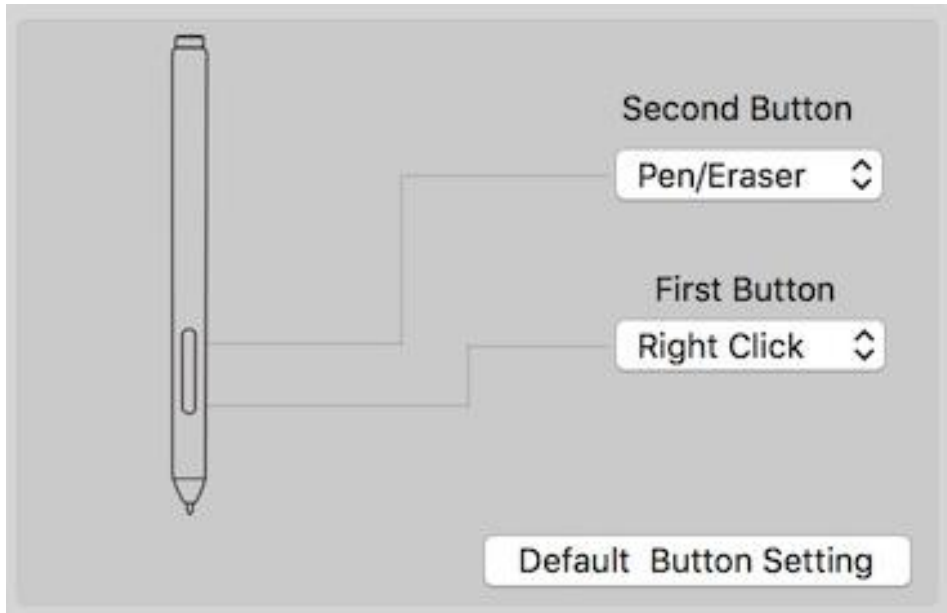


Image 4-22. Pen

Note:

Pen/Eraser Toggle

With the stylus in range of the Artist12 Pro, 13.3 Pro & 15.6 Pro's working area, press the assigned barrel button to toggle between pen and eraser modes in compatible drawing software. The current mode will briefly be displayed on your monitor.

- c. Disable pen pressure: When the "Disable pen pressure" function is enabled, you can disable the pen pressure function.
- d. Disable Key Function: When you enable it, all of the express keys function will be disabled.
- e. Disable Display Message: When you enable it and press any express key, the message will not popup on the bottom of your screen.



Image 4-23. Configuration Setting

- f. Output: You can adjust pen pressure to "Output" or "Press" sensitivity on here. It shows the current pressure level being exerted on your tablet and can be used to test pen pressure.

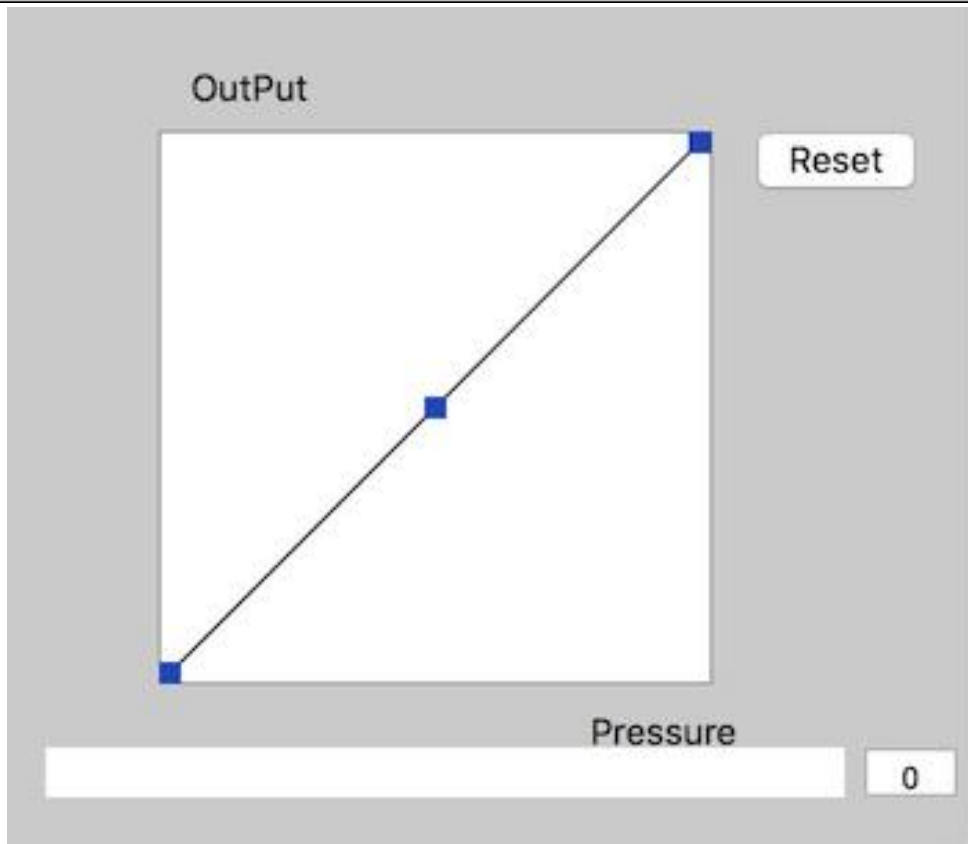


Image 4-24. Output

g .Import & Export Profiles: You can use the Import & Export Profile function to save/load your barrel buttons and shortcut keys setting.



Image 4-25. Import & Export Profiles

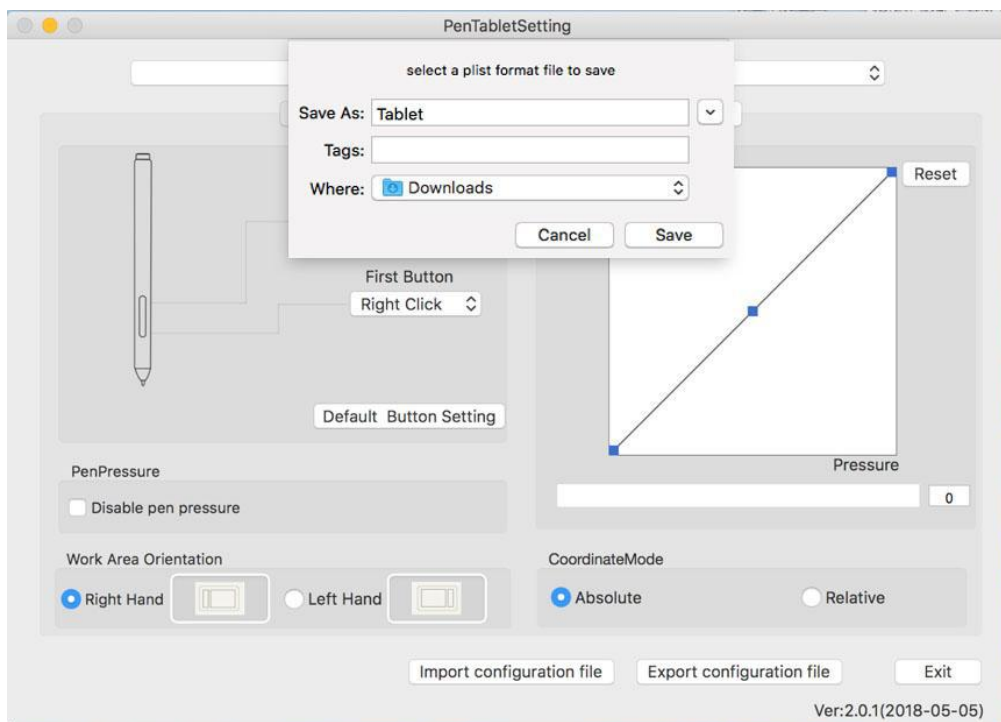


Image 4-26. Export configuration file

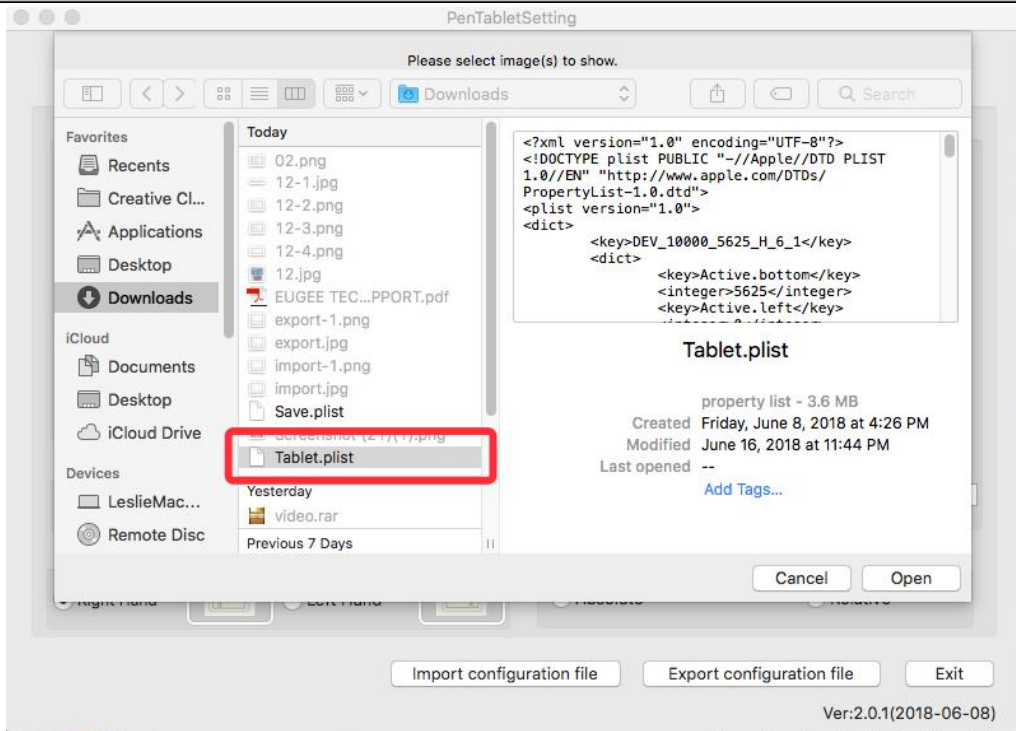


Image 4-27. Import configuration file

1.2. Monitor

The "Monitor" tab allows you to configure your tablet to use Main monitor (monitor1) or Artist 12 Pro, 13.3 Pro & 15.6 Pro (monitor2).

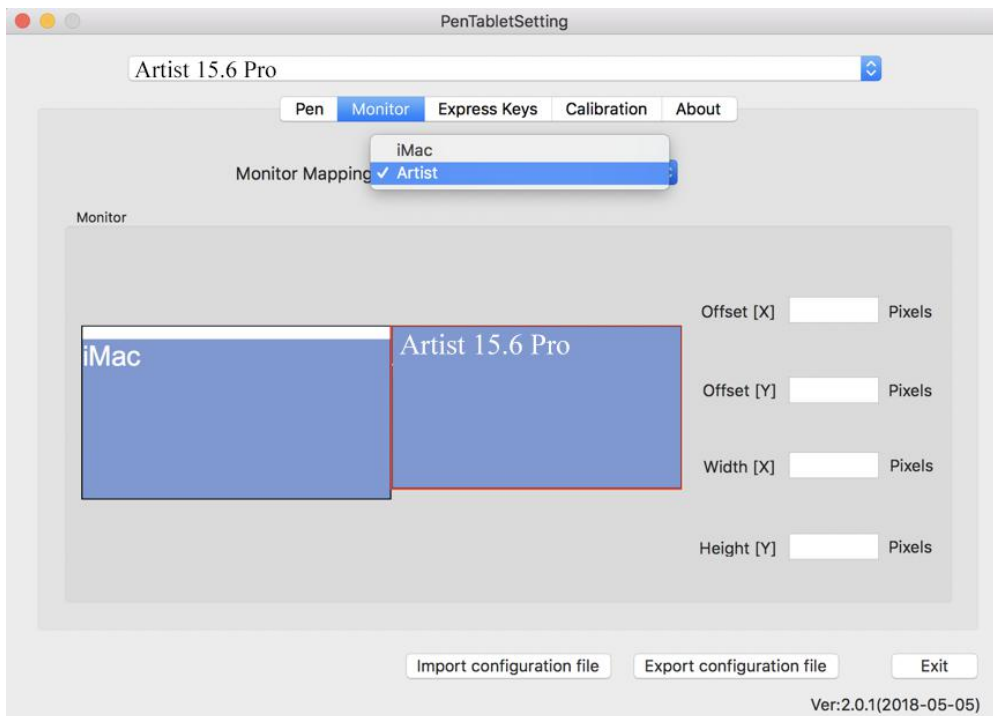


Image 4-28. Monitor

1.3. Express Keys

Notes:

- The Artist 12 Pro, 13.3 Pro & 15.6 Pro's shortcut keys are designed to work with US English keyboards. Keys may not function correctly with the other keyboard languages.
- By default, the Artist 12 Pro, 13.3 Pro & 15.6 Pro express keys are mapped to standard Photoshop keyboard shortcuts. Keys can be customized to function efficiently in other software.
- You must set one of the express keys from Switch function to switch dial.

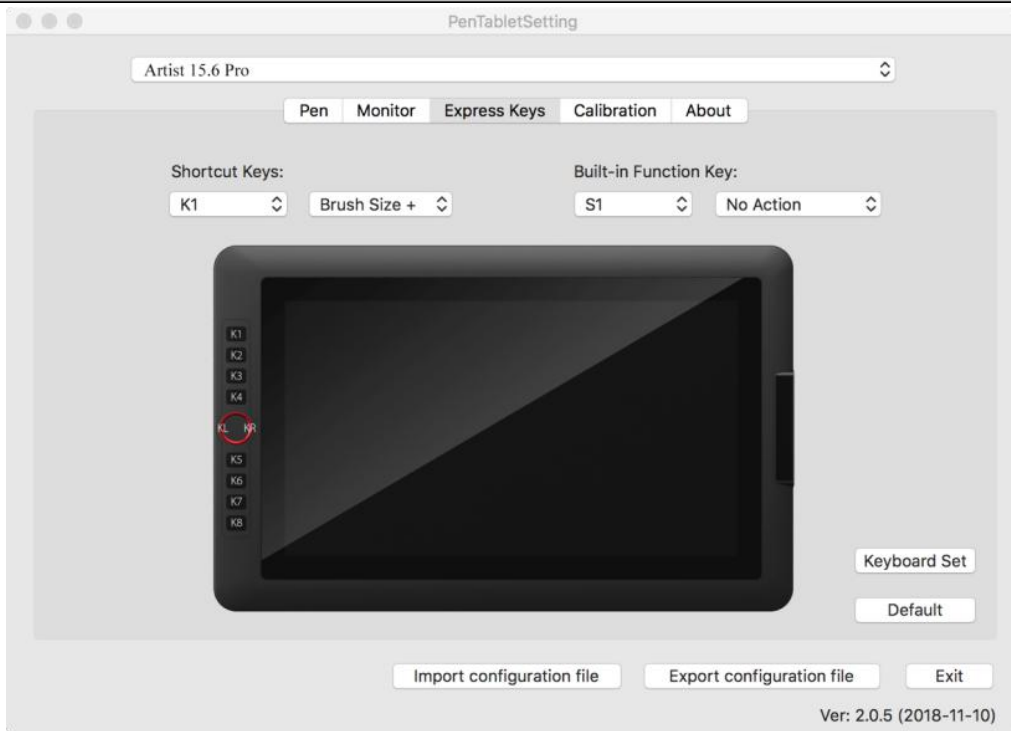


Image 4-29. Express Keys

In the Express Keys tab, you may choose your preferred functions for the Artist 12 Pro, 13.3 Pro & 15.6 Pro's shortcut keys. Use the "Reset Customer Defined" option to program custom keystrokes.

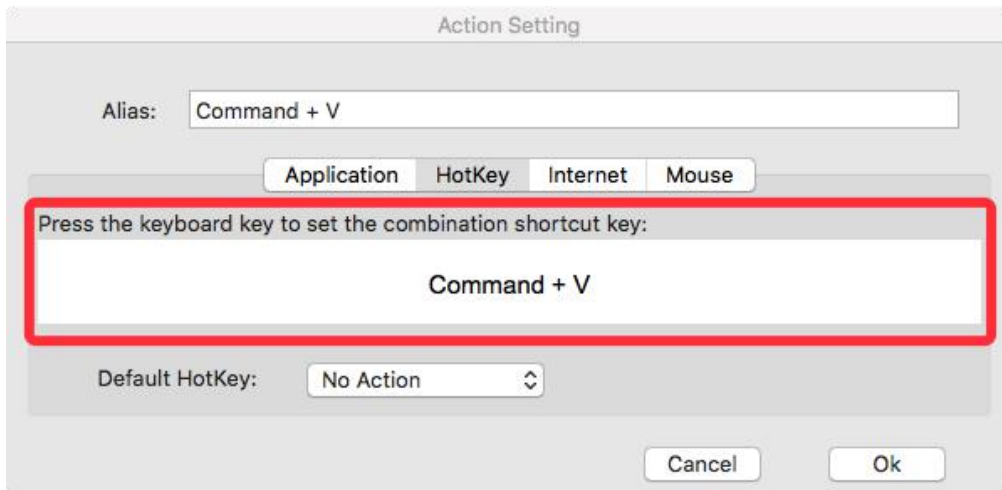


Image 4-30. Action Setting

You can set each shortcut key for different software.

a. Click the "+" button to go to Select Program tab.

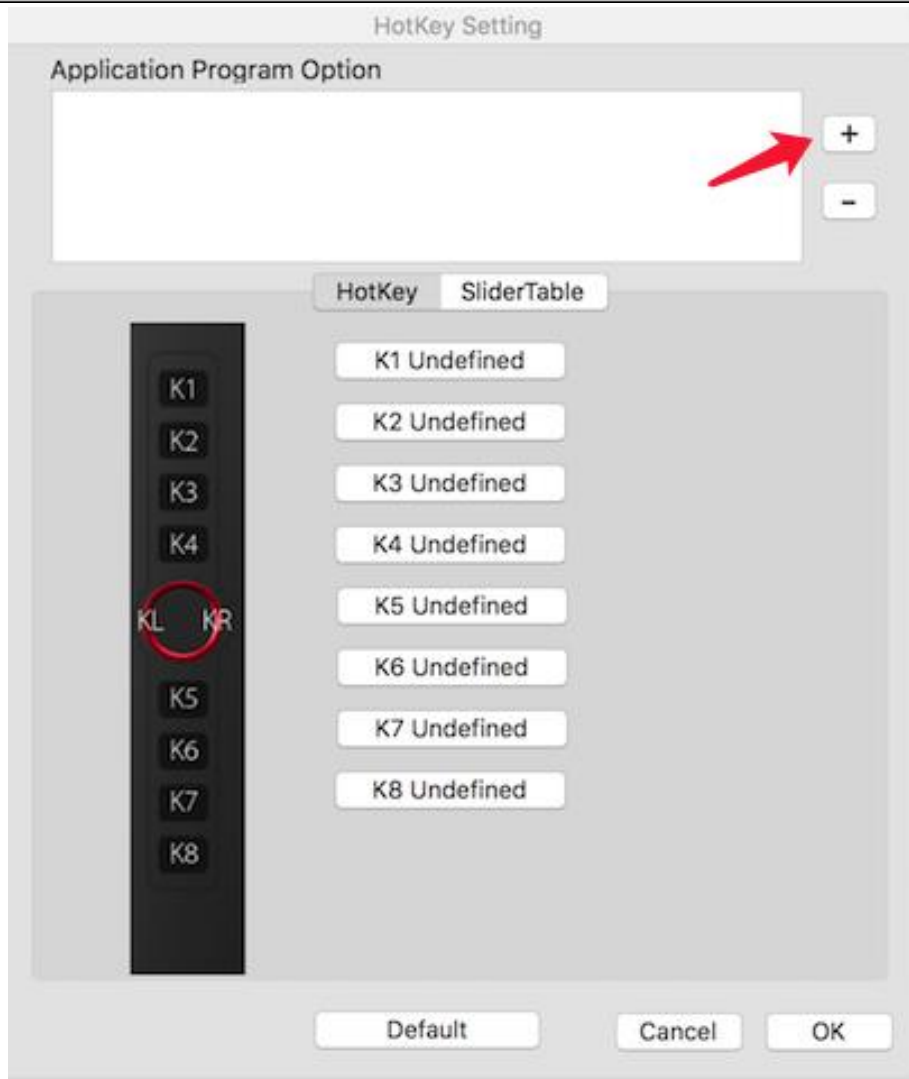


Image 4-31. Select Program

b. Your choice of software.

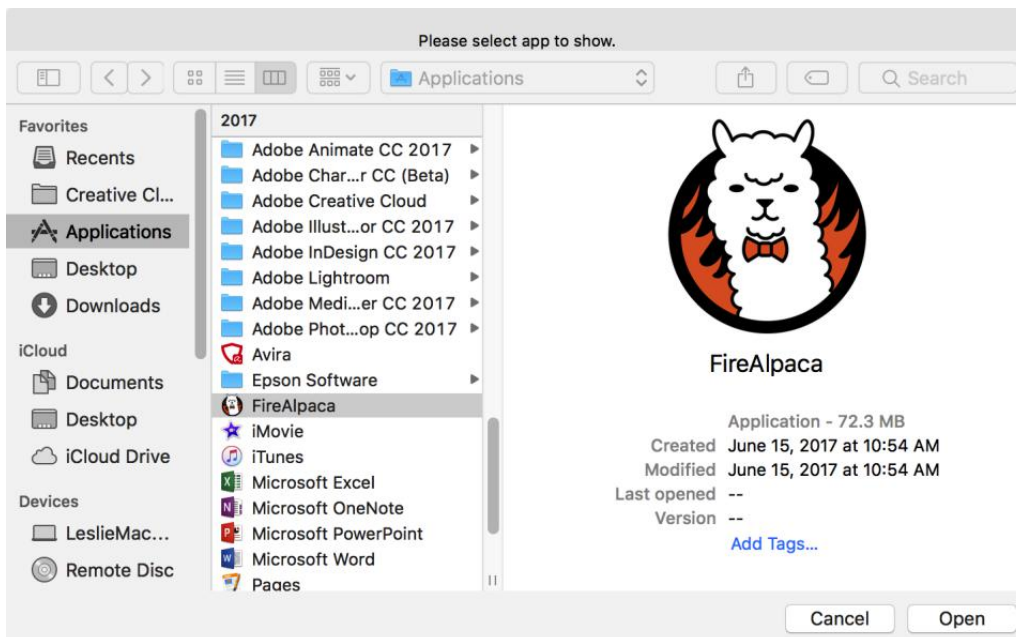


Image 4-32. Select Program

c. Return to the shortcut key settings tab, click the tablet icon then customize the shortcut keys. When you are finished, click the OK button and exit the tablet settings menu.

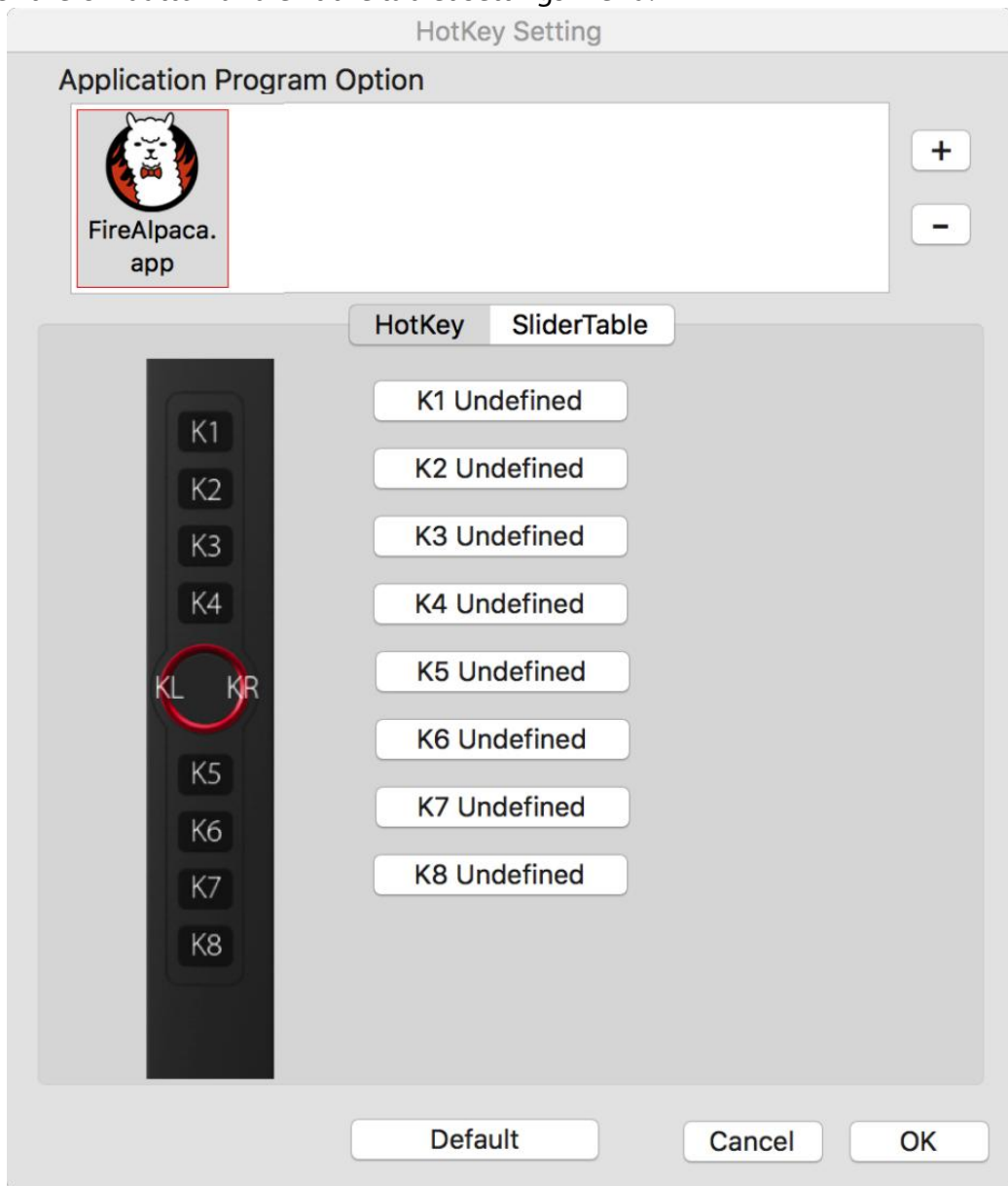


Image 4-33. Hot Key

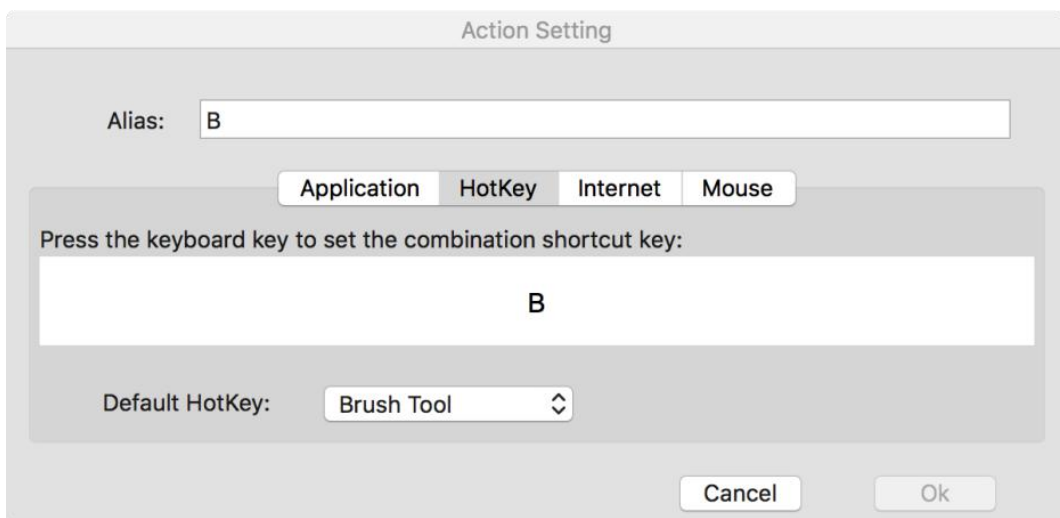


Image 4-34. Action Setting

You can set each dial for different software.

a. Click the software icon first and then go to the Dial tab.

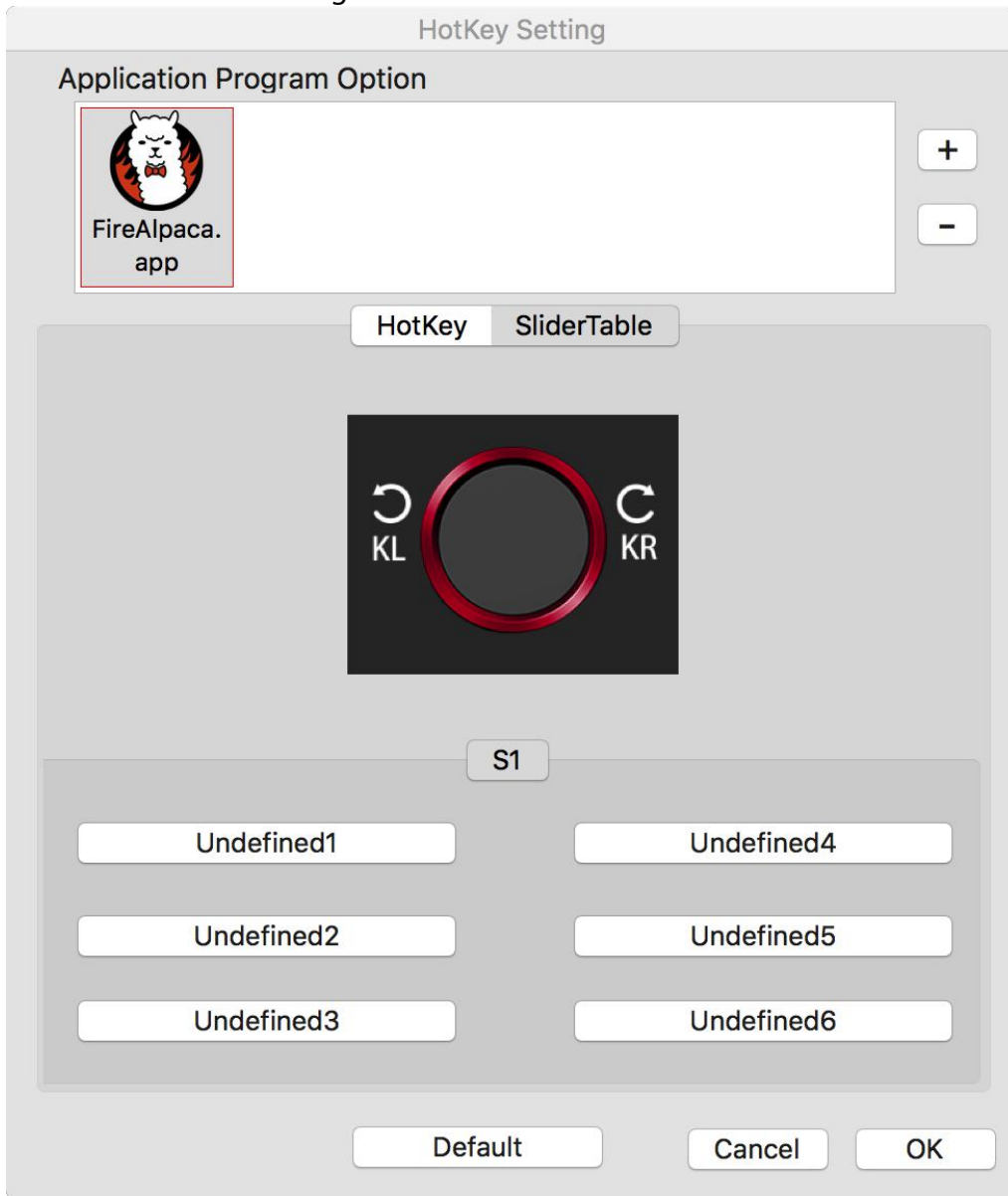


Image 4-35. Slider

b. Click each dial function.

c. On the setting tab, you can customize "Left HotKey" and "Right HotKey" to different shortcuts like Ctrl+ & Ctrl-.

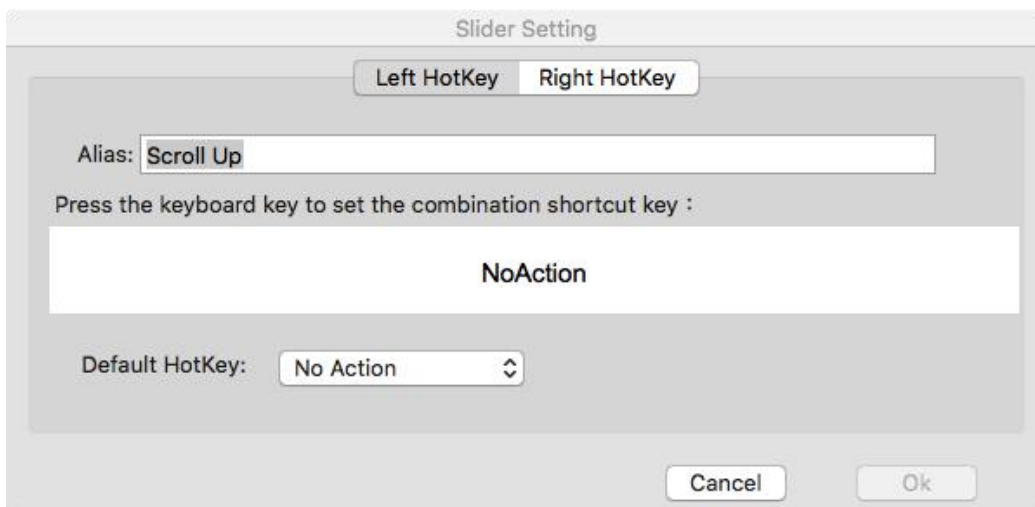


Image 4-36. Slider Setting

1.4. Calibration

The Calibration tab allows you to calibrate your tablet or rotate your display.

To calibrate, click Calibration and follow the on-screen instructions.

Rotate: You may rotate the Artist 12 Pro, 13.3 Pro & 15.6 Pro's display in this tab.



Image 4-37. Calibration

1.5. About

This tab displays the current version of your driver software.

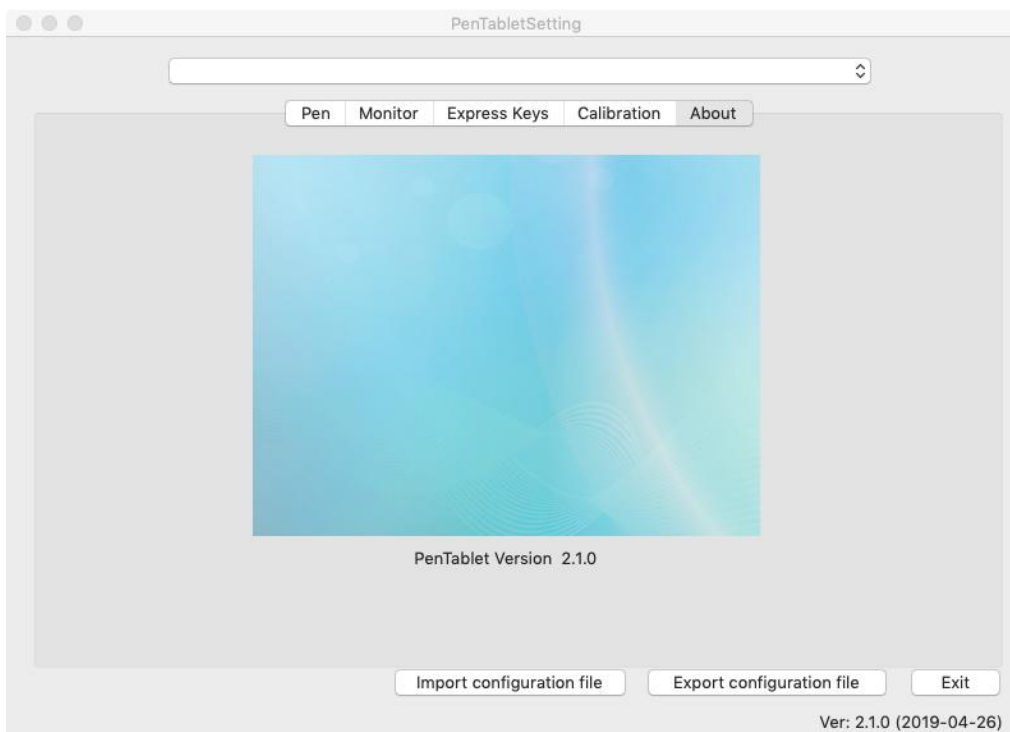


Image 4-38. About

{ V. Driver Uninstall }

Windows

In the Start menu, open [Settings] → [Apps & features]. Find “Pentablet” and click “Uninstall.” Follow the on-screen instructions.

Mac

Open [Finder] → [Application] → [Pen Tablet], then click “Uninstall Pen Tablet” and follow the on-screen instructions.

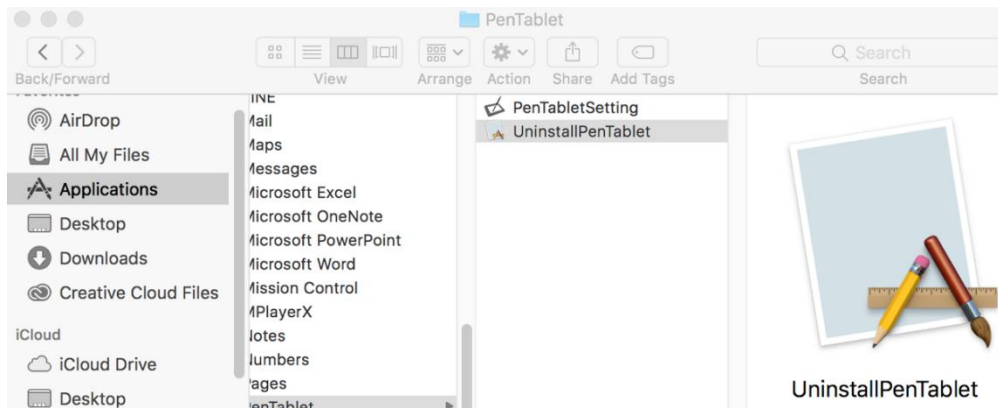


Image 5-1: Mac uninstall

NOTE :

When attempting to reinstall the Artist 12 Pro, 13.3 Pro & 15.6 Pro driver, be sure to reboot your computer after the uninstall is complete.

{ VI. FAQ }


1. Where can I download the latest Artist 12 Pro, 13.3 Pro & 15.6 Pro driver?

a. Latest driver releases can be downloaded from our website (www.xp-pen.com).

2. I can't use the stylus to control the cursor.

- a. Turn on your Artist 12 Pro, 13.3 Pro & 15.6 Pro and make sure you can see the display.
- b. Reinstall the driver and then find the tablet icon in the system tray.
- c. Open it and test the pen pressure gauge inside
- d. If you can't test the pen pressure, please uninstall the driver and reboot. Make sure your computer login account has Administrator authority.
- e. The Artist 12 Pro, 13.3 Pro & 15.6 Pro supports plug and play, please test your stylus pens function before reinstalling the driver. If you have control, please disable your antivirus then go to the XP-Pen website to download the latest driver.
- f. When the download is complete, please unzip and extract the contents of the folder to run the .exe or .pkg installation file.
- g. Open the tablet setting again then make sure can you use the pen pressure on it

3. How do I know that the Artist 12 Pro, 13.3 Pro & 15.6 Pro driver installed successfully?

- a. After installing the driver, the Artist 12 Pro, 13.3 Pro & 15.6 Pro's driver icon  should be visible in your system tray on the bottom-right of your screen (Windows OS) and desktop. Pen input will control the cursor and pressure sensitivity will be functional in the driver.

4. Why can't I use the pen pressure on the drawing software?

- a. Please make sure the drawing software can support pen pressure.
- b. Make sure you have the latest driver installed.
- c. Open the tablet setting and make sure you can test the pen pressure in it.
- d. Enable the "windows ink" function then click the ok button to exit. Open the drawing software again and test your pen pressure.
- e. Please note our tablets do not come with drawing software.

If you have any questions, please contact us at:

Web: www.xp-pen.com

Email: service@xp-pen.com