

Contents

User Guide

Quick Start Guide	1
Play Audio from a Phone	5
Stereo Group	7
More Instructions	9

Hot FAQs

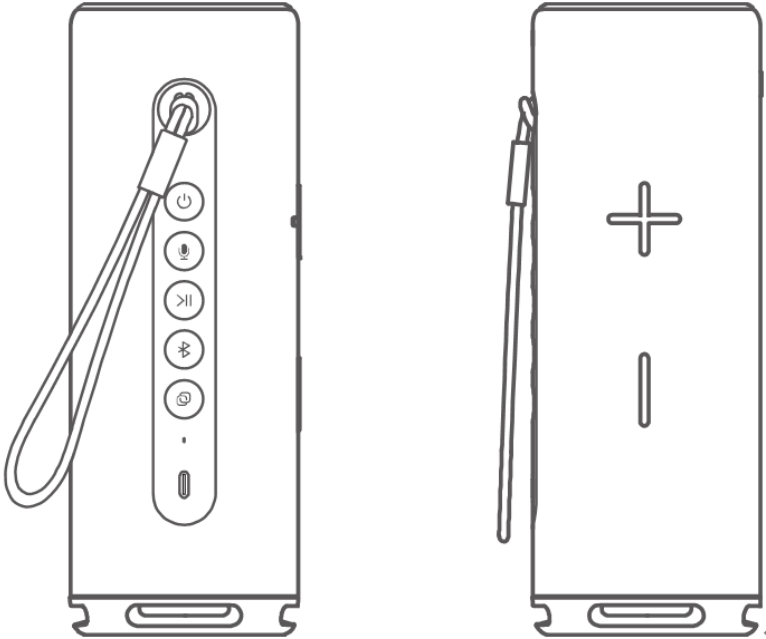
Other FAQs	11
------------	----

User Guide

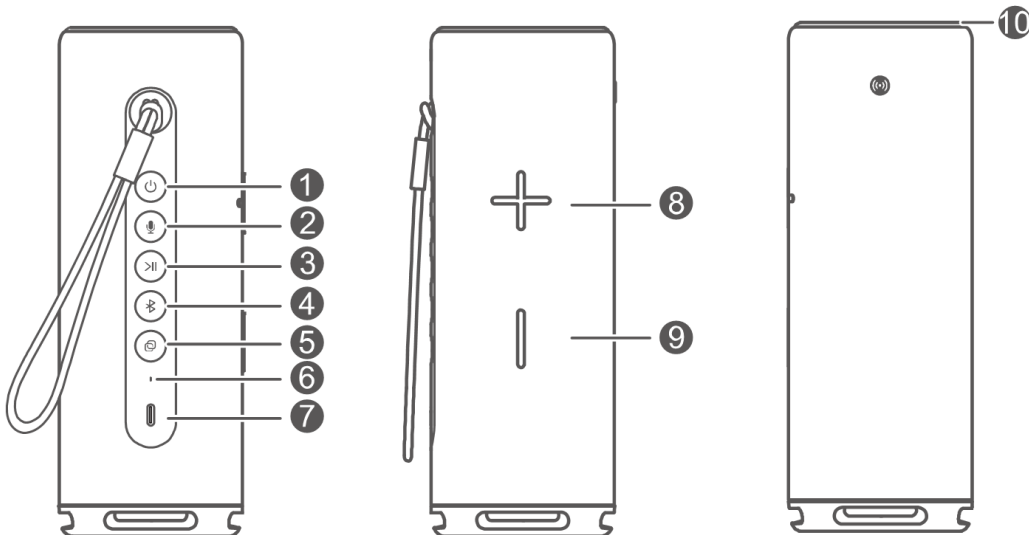
Quick Start Guide

Appearance

Speaker appearance:




Buttons and ports:






No.	Button/Port	Function
1	Power button	Press and hold for 9s to forcibly restart, press and hold for 1s to power off, short press to power on, or press once for less than 1s to check the battery level after the speaker is powered on

No.	Button/Port	Function
2	Voice control button	Press to wake up the voice assistant on the phone
3	Play/Pause button	<ul style="list-style-type: none"> • Press to play/pause • Press to answer or end a call, or press and hold to reject a call • Press and hold with the Volume - button at the same time for 5s to restore the speaker to its factory settings
4	Bluetooth button	Press to turn on/off Bluetooth
5	Stereo button	Press twice to set up or cancel stereo group
6	Battery level indicator	Indicates the battery level
7	Charging port	Connects to a charger through a cable
8/9	Volume +/- button	Increases or decreases the volume
10	Ring indicator	Shows different light effects for different functions


Speaker lighting effect

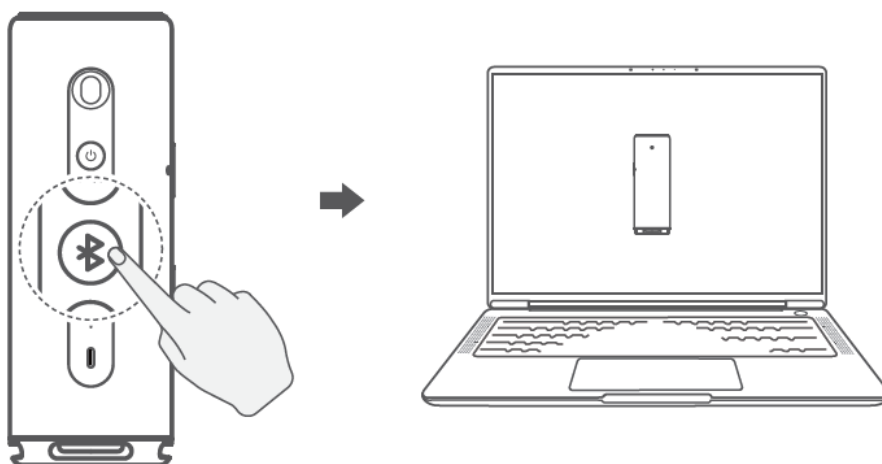
Ring Indicator Color	Ring Indicator Status	Button Indicator Status	Speaker Status
White 	Turns on	Power button steady on	Powering on
		Voice button on	Waking up the voice assistant on the phone
	Turns on for 1s and then turns off	Bluetooth button flashes	Bluetooth connection in progress
		Bluetooth button steady on	Bluetooth connected
	Changes in stages	/	Increasing/Decreasing volume
	Diffuses, spins, turns on, and turns off	Bluetooth button flashes	OneHop Audio Sharing connection in progress

Ring Indicator Color	Ring Indicator Status	Button Indicator Status	Speaker Status
		Bluetooth button steady on	OneHop Audio Sharing connected
	Spins	Stereo button flashes	Setting up a stereo group
		Stereo button steady on	Stereo group set up
	Turns on and then turns off in stages, and flashes once at the current battery level and then turns off	Power button steady on	Checking battery level
Green 	Turns on	/	Incoming call/Answering a call
	Steady on		Call in progress
	Off		Call ended
	Increases in stages		Updating firmware
Yellow 	Increases in stages	/	Being restored to factory settings
Multi-color 	Spins	/	Media playback*
/	/	Battery indicator turns white	Battery level \geq 20%
		Battery indicator turns yellow	Battery level \geq 10%
		Battery indicator turns red	Battery level $<$ 10%

- Due to the production process, the colors of the ring indicator may vary slightly on different speakers. Please refer to the actual light effect.
- By default, there is no light effect during media playback. To enable the light effect, perform the following:
 - 1 Open the **AI Life** app. On the **Home** screen, select the speaker card, touch **Light effect**, and enable **Sync with music**.
 - 2 During music playback, press and hold the Play/Pause button for 3 seconds to enable the light effect.
- The Power button is steady white when the speaker is powered on. Other buttons are displayed depending on the speaker status.


Connect the speaker to a PC


When the speaker is close to a PC, press the Bluetooth button  briefly to enable Bluetooth. A connection card will pop up on the PC. Click **CONNECT** to complete the Bluetooth connection between the speaker and the computer.

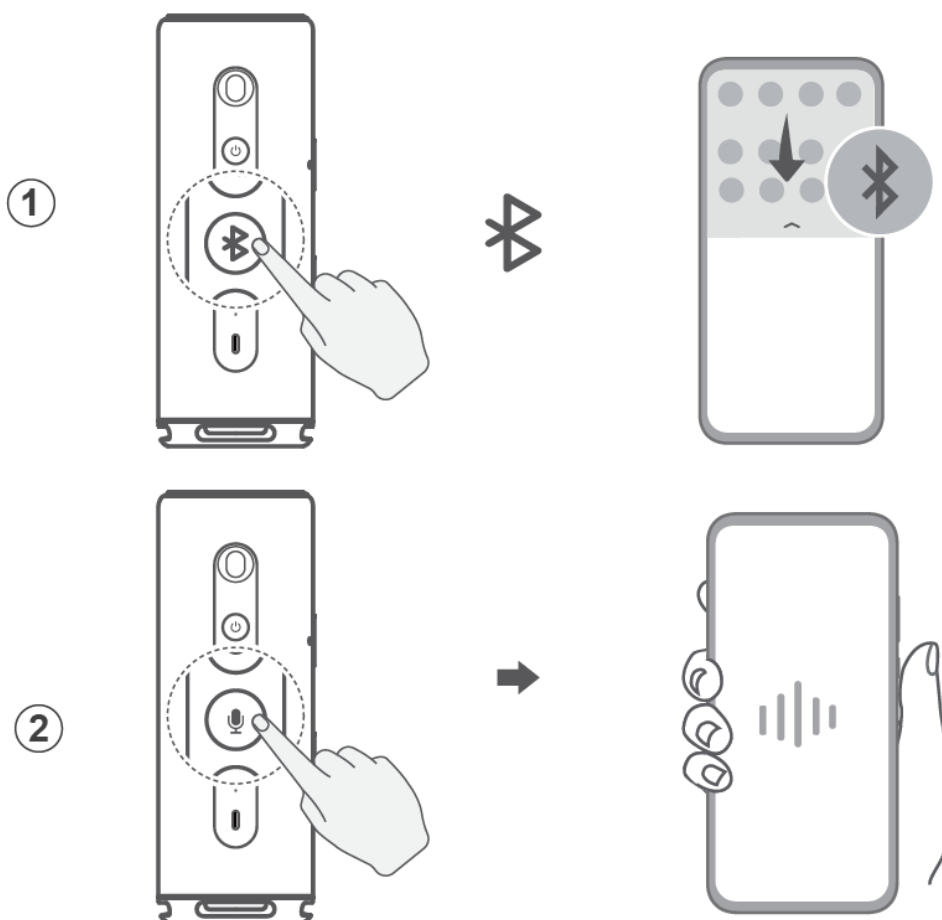


- This feature is only supported by the following Huawei laptops: HUAWEI MateBook D 16, HUAWEI MateBook 13 2021, HUAWEI MateBook 14 2021, and HUAWEI MateBook X Pro 2021
 - Update PC Manager to the latest version on the above laptops to use this feature.
 - If you are using a Huawei PC not listed above, or a non-Huawei PC, enable Bluetooth on the speaker and the computer and manually connect them.

Wake up the voice assistant on your phone using the speaker


- 1 On your phone, go to **Settings > HUAWEI Assistant > AI Voice > Voice wakeup**, and follow the onscreen instructions to enable AI Voice.
- 2 Press the Bluetooth button  on the speaker to turn on Bluetooth and connect the speaker to your phone.

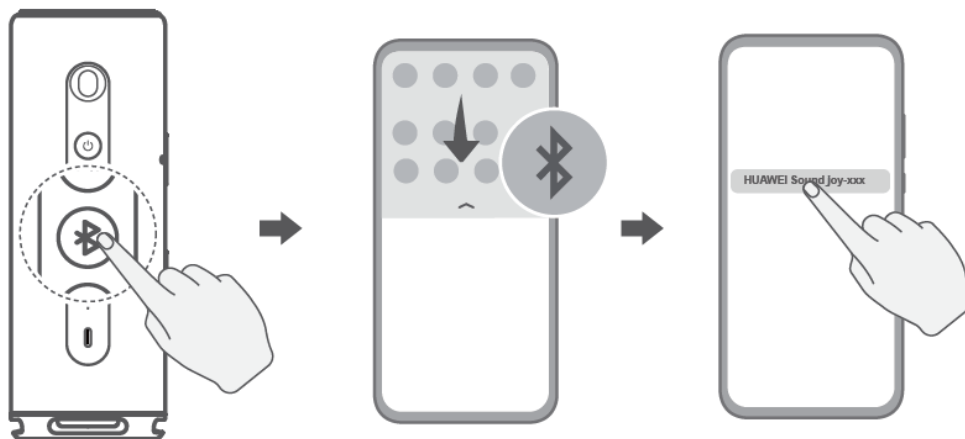
- 3** When the speaker is connected to your phone for the first time, press the voice button  on the speaker. A prompt will be displayed on your phone instructing you to select the voice assistant. Go to **AI Voice > ALWAYS ALLOW**. When you use the speaker again, keep the Bluetooth connection between your phone and the speaker and press the voice button to wake up AI Voice on your phone.




Play Audio from a Phone

Connect to the speaker via Bluetooth to play music

- 1** Press the Bluetooth button  on the speaker to turn on Bluetooth.
- 2** Open **Settings** on the phone, access the Bluetooth screen, and enable Bluetooth. Search for available devices nearby and select the speaker that you want to connect to.
- 3** After a Bluetooth connection is set up between the speaker and your phone, the speaker can be used for Bluetooth calls or to play audio from your phone.

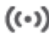


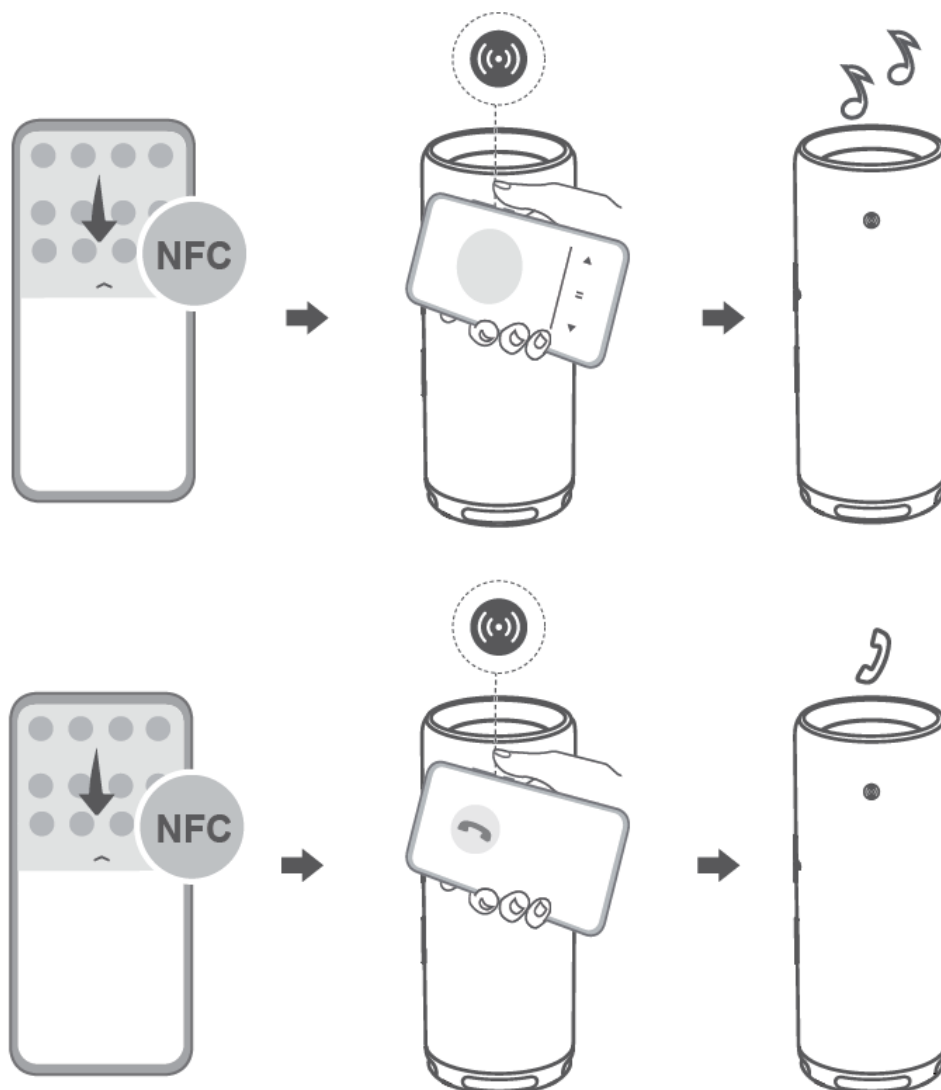
To disable Bluetooth on the speaker, press the Bluetooth button  again.

OneHop Audio Sharing

Ever wanted to use the speaker to play audio directly from your phone? To do this, tap your phone against the speaker, and audio played on your phone will seamlessly switch to the speaker with even better audio quality.

Enable OneHop Audio Sharing

- 1 Enable NFC on your phone, and make sure the screen is unlocked and turned on. It is recommended that you enable Bluetooth on both your phone and speaker.
- 2 Tap the NFC area on your phone against the  icon on the speaker and touch to confirm the connection on your phone. You can then use the speaker for calls or to play audio from your phone.



Disconnect OneHop Audio Sharing

Do so in any of the following ways.

- Cancel the Bluetooth connection between your phone and speaker: Access the Bluetooth settings screen on your phone and touch the name of the connected speaker to disconnect from it.
 - Disable Bluetooth on your phone: Access the Bluetooth settings screen of your phone and disable Bluetooth.
- i** This feature is only supported on NFC-compatible phones running Android 5.1.1 or later.



Stereo Group

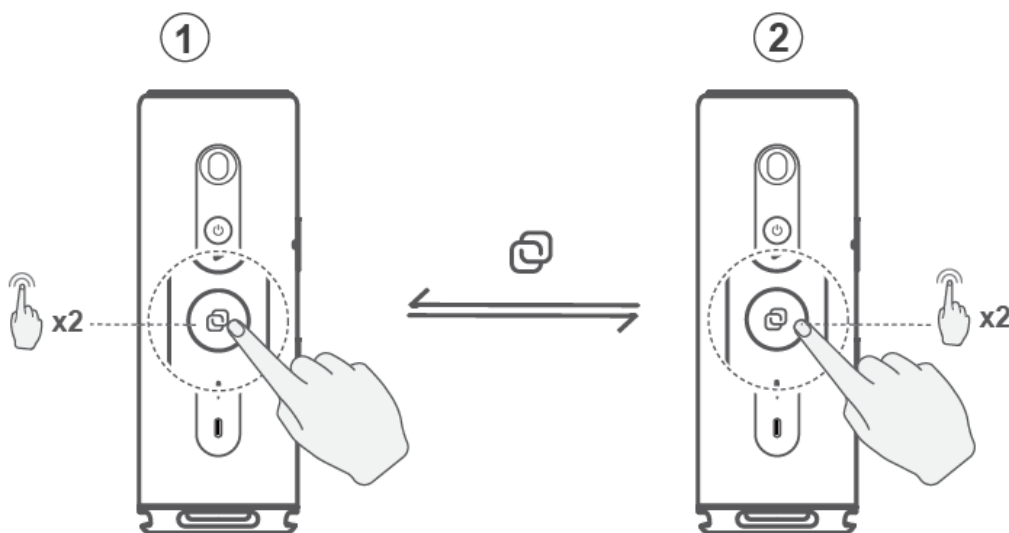
Set up a stereo group

If you have two speakers that are of the same model, you can connect them to establish a stereo group. When you play music, the two speakers will produce audio simultaneously, delivering stereo sound effects.

- i** Place the two speakers in the same room. The recommended distance between them is 1 to 3 meters.

Method 1: Double-press the Stereo button  on the speaker to set up a stereo group.

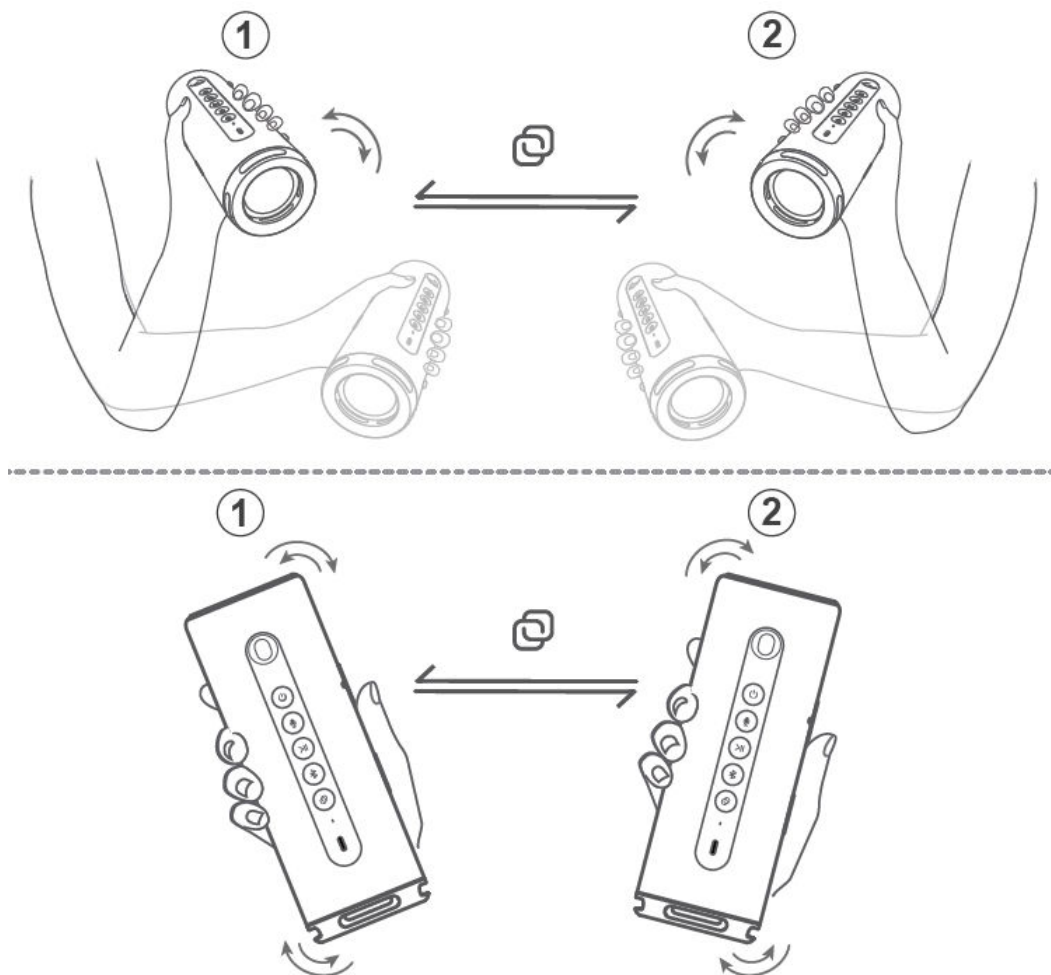
- 1 Double press the Stereo button  on either of the speakers. The ring indicator will turn white and spin.
- 2 Double press the Stereo button  on the other speaker, and wait for the stereo group to set up.



Method 2: Shake to set up the stereo group


Shake the two speakers at the same time for 1 to 3 seconds. The ring indicator on both speakers will turn white and spin. Wait for the stereo group to be set up, after which the ring indicators will turn steady white.

You can set up a stereo by shaking the speaker in either of the following ways.



- i Shaking the speakers to set up a stereo group is available only when the speaker is idle (no ongoing operation or playback).

Cancel the stereo group

Double press the Stereo button  on either of the speakers in the stereo group to ungroup the speakers.

More Instructions

Schedule off time


When the schedule off time feature is enabled, the speaker will automatically power off after the scheduled period to save power if the speaker is not connected to the power source and is in the idle state (no ongoing operation or playback).

To enable the feature, open the **AI Life** app, touch the speaker card on the **Home** screen, select **Schedule off time**, and specify a time period. To disable the feature, select **Never**.

- i The schedule off time feature is enabled by default, with the time period set to 15 minutes.

Low power consumption mode

When the speaker is powered on, it enters the idle state. Enabling the low power consumption mode can save power and prolong the usage time.

To enter low power consumption mode, press and hold the voice button  for 5 seconds. You can exit the low power consumption mode in either of the following ways: press any button, use NFC tapping, shake the speaker, or play audio over Bluetooth.

Restore the speaker to its factory settings

To restore the speaker to its factory settings, perform the following:

Make sure that the speaker is connected to a power source, and press and hold the Play/Pause button >|| and Volume – button at the same time for about 5 seconds.

Update


The speaker can be updated for a better user experience. Please update your speaker to the latest version in a timely manner.

The update usually takes about 5 to 10 minutes. During the update, ensure that your phone is connected to the speaker over Bluetooth and the network connection is stable. Do not exit the update screen. You will not be able to use your speaker during the update.

Charging

- 1 It is recommended that you use a 5 V/2 A, 9 V/2 A, or 10 V/4 A charger to charge the speaker. After the speaker is fully charged, remove the charger to prolong the battery lifespan.
- 2 It is recommended that you use a Huawei charger and charging cable. The charging speed will be affected if you use a charger that does not support SCP2.0 or PD3.0 with a standard charging cable.

Set the speaker name and location

- 1 Open the **AI Life** app. On the **Home** screen, touch the speaker card, touch  in the upper right corner, and then touch **Device settings**.
- 2 On the device settings screen, you can change the **Device name** and **Location**.

Hot FAQs

Other FAQs

Can multiple users use the same HUAWEI ID to connect to the speaker?

Yes, you can log in to the **AI Life** app on multiple phones using the same HUAWEI ID and connect to the speaker. However, this may cause inconsistent speaker status across the apps on different phones. Therefore, it is not recommended that you do so.

Which devices can I connect my speaker to?

The speaker can be connected to a Bluetooth device used as its audio output device, such as a phone, tablet, computer, or TV.

The speaker can only be connected to one central device (such as a phone) through Bluetooth at a time. A maximum of 10 devices that have been connected to the speaker can be saved.

Speaker volume is too low after connecting to a Bluetooth device

Turn up the volume of both your phone and speaker. Press the + button of the speaker to increase the volume.

If your phone is running HarmonyOS or later, go to **Settings > Bluetooth**, select the speaker from the list of paired devices, and enable **Sync volume with phone**.

Control different speakers

If multiple speakers are linked to the **AI Life** app, you can touch the corresponding speaker card on the **Home** screen, or select a speaker from the top of the **Media** screen.

More FAQs

Go to **AI Life > Me > Help & feedback**, touch the corresponding speaker card, and check for more FAQs. If the problem persists, touch **Give feedback** to submit the problem.