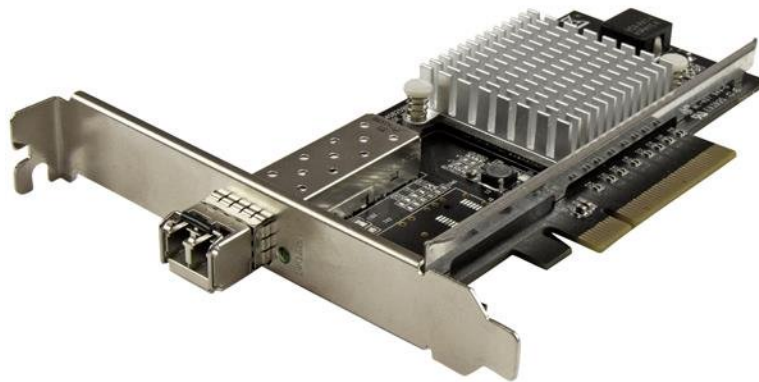


1-Port 10G SFP+ Fiber Optic Network Card - PCIe - Intel Chip - MM

Product ID: PEX10000SRI



This fiber optic network card delivers reliable, high-performance network connectivity, providing an easy and cost-effective way to upgrade your server or workstation to 10 Gigabit networking over multimode fiber. The 10G network card comes with an installed multimode SFP+ transceiver with up to 330 m range, to get you up and running quickly.

Take advantage of faster network speeds

Increasing numbers of network users and data-intensive applications, such as multimedia streaming and large file transfers, all drive the need to increase the bandwidth capability of your network infrastructure. This fiber NIC lets you take advantage of the increased speed and stability of a 10 Gigabit network, with data transfers of up to 10Gbps and up to 20Gbps (full duplex) bandwidth.

Includes an SFP+ transceiver, built for reliable performance

For added convenience, this single-port 10G network card comes with an installed multimode SFP+ transceiver. Built to ensure reliable performance, the 10 GbE SFP+ is manufactured by StarTech.com to meet or exceed OEM specifications and comply with the industry's MSA (Multi-Source Agreement) standards. The 10GBase-SR SFP+ delivers 10 Gigabit connectivity over multimode fiber cable with a range of up to 330 m (1082 ft).

Enhance your network capabilities and reliability

The 10 Gigabit network card features the Intel® 82599 chipset, delivering the power, performance and enhanced capabilities you need for reliable network connections to your server or computer. The Intel chip offers many advanced features including Intel® Virtualization Technology for Connectivity, PXE network boot support and up to 15K jumbo frame support.

The 10G NIC connects easily through an available PCI Express expansion slot, and is compliant with PCIe Rev. 2 x8 (or higher). The network card comes with a standard profile, and also includes a low-profile bracket, for versatile installation.

The PEX10000SRI is backed by a StarTech.com 2-year warranty and free lifetime technical support.

Certifications, Reports and Compatibility



Applications

- Connect servers and workstations at 10Gbps over multimode fiber
- Supports secure setups - a direct fiber connection means no electronic interference, which can be a problem with RJ45 network cards
- Ensure reliable network performance with the pre-installed multimode SFP+ transceiver, with a range of up to 330 m (1082 ft.)
- Create a video / audio editing console with 10Gbps access to network storage

Features

- Upgrade your server or workstation to 10G Ethernet for fast, high-bandwidth connectivity over multimode fiber
- Single-port 10G network card with installed multimode SFP+ transceiver (up to 330 m range)
- Intel 82599 chipset with Intel Virtualization Technology for Connectivity
- Compliant with IEEE 802.3ae (10GBASE-SR)
- Supports PXE network boot support, VLAN tagging, link aggregation
- Up to 15K jumbo frame support
- Up to 20Gbps (full duplex) bandwidth

Hardware	Warranty	2 Years
	Bus Type	PCI Express
	Card Type	Standard Profile (LP bracket incl.)
	Chipset ID	Intel - 82599
	Interface	Fiber (10 Gigabit Ethernet)
	Ports	1
Performance	Compatible Networks	10 Gbps
	Full Duplex Support	Yes
	Jumbo Frame Support	9K max.
	Maximum Data Transfer Rate	20000 Mbps (20 Gbps) - Full-Duplex
	Promiscuous Mode	Yes
	Supported Protocols	IEEE 802.3ad (Link Aggregation) IEEE 802.3x (Flow Control Support) IEEE 802.1Q (VLAN tagging)
Connector(s)	Connector Type(s)	1 - PCI Express x8 Male
	External Ports	1 - Fiber Optic LC Duplex Female
Software	OS Compatibility	Windows® 7, 8, 8.1, 10 Windows Server® 2008 R2, 2012, 2012 R2, 2016, 2019 (Windows Drivers are supported in 64-bit only) Linux 2.6.24 to 4.11.x <i>LTS Versions only</i>
Environmental	Humidity	20% ~ 80% RH
	Operating Temperature	5°C to 50°C (41°F to 122°F)
	Storage Temperature	-20°C to 60°C (-4°F to 140°F)
Physical Characteristics	Color	Black
	Product Height	4.7 in [12 cm]
	Product Length	5.3 in [13.5 cm]
	Product Width	0.7 in [18 mm]
	Weight of Product	4.1 oz [116 g]
Packaging Information	Package Height	1.2 in [30 mm]
	Package Length	6.7 in [17 cm]
	Package Width	5.6 in [14.3 cm]
	Shipping (Package) Weight	6.8 oz [194 g]

What's in the Box	Included in Package	1 - 10G SFP+ fiber network card
		1 - 10GBase-SR SFP+ transceiver module
		1 - low-profile bracket
		1 - quick-start guide

Product appearance and specifications are subject to change without notice.