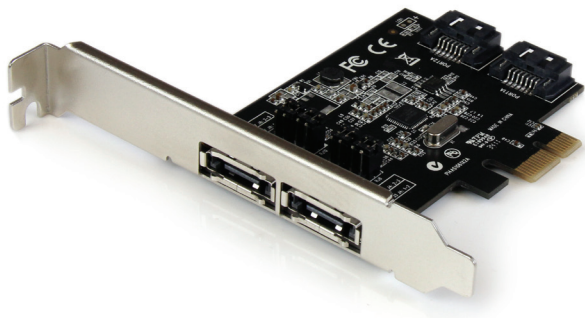


PCI Express eSATA/SATA 6Gbps Controller

PEXESAT322I



*actual product may vary from photos

DE: Bedienungsanleitung - de.startech.com

FR: Guide de l'utilisateur - fr.startech.com

ES: Guía del usuario - es.startech.com

IT: Guida per l'uso - it.startech.com

NL: Gebruiksaanwijzing - nl.startech.com

PT: Guia do usuário - pt.startech.com

For the most up-to-date information, please visit: www.startech.com

FCC Compliance Statement

This equipment has been tested and found to comply with the limits for a Class B digital device, pursuant to part 15 of the FCC Rules. These limits are designed to provide reasonable protection against harmful interference in a residential installation. This equipment generates, uses and can radiate radio frequency energy and, if not installed and used in accordance with the instructions, may cause harmful interference to radio communications. However, there is no guarantee that interference will not occur in a particular installation. If this equipment does cause harmful interference to radio or television reception, which can be determined by turning the equipment off and on, the user is encouraged to try to correct the interference by one or more of the following measures:

- Reorient or relocate the receiving antenna.
- Increase the separation between the equipment and receiver.
- Connect the equipment into an outlet on a circuit different from that to which the receiver is connected.
- Consult the dealer or an experienced radio/TV technician for help.

Use of Trademarks, Registered Trademarks, and other Protected Names and Symbols

This manual may make reference to trademarks, registered trademarks, and other protected names and/or symbols of third-party companies not related in any way to StarTech.com. Where they occur these references are for illustrative purposes only and do not represent an endorsement of a product or service by StarTech.com, or an endorsement of the product(s) to which this manual applies by the third-party company in question. Regardless of any direct acknowledgement elsewhere in the body of this document, StarTech.com hereby acknowledges that all trademarks, registered trademarks, service marks, and other protected names and/or symbols contained in this manual and related documents are the property of their respective holders.

Table of Contents

Introduction	1
Packaging Contents	1
System Requirements.....	1
Installation	2
Hardware Installation	4
Driver Installation	4
Verifying Installation	5
Windows.....	5
Specifications	6
Technical Support	7
Warranty Information	7

Introduction

The PEXESAT322I PCI Express SATA III Controller Card (6 Gbps) gives you the option to add 2 internal or external SATA ports to your computer, through a single PCI Express (x1) card slot. The card features on board jumper selection, which enables you to configure the card to provide 2 internal or external SATA III ports, or one of each, as needed.

The SATA III card features Port Multiplier (PM) support on each port, which allows multiple drives to be connected over a single cable when necessary to maximize the number of SATA device connections while reducing the amount of cabling required.

The card is fully compliant with the SATA revision 3.0 specification (up to 6Gbps of data bandwidth), enabling you to utilize the speeds of high performance hard drives and Solid State Drives (SSD), as well as SATA-based optical drives (CD-ROM, DVD-ROM, Blu-Ray).

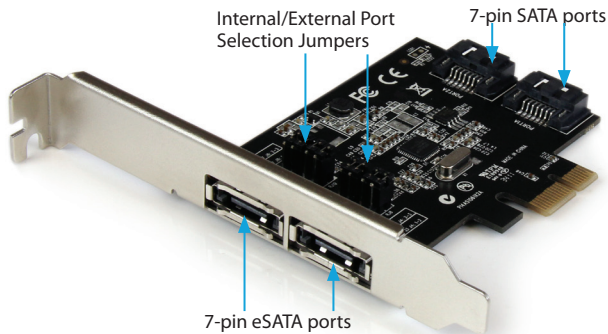
The PEXESAT322I SATA III Controller card is backed by our 2-year manufacturer warranty and free lifetime technical support.

Packaging Contents

- PCIe SATA Controller
- Low Profile Bracket
- Driver CD
- Instruction Manual

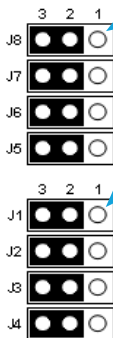
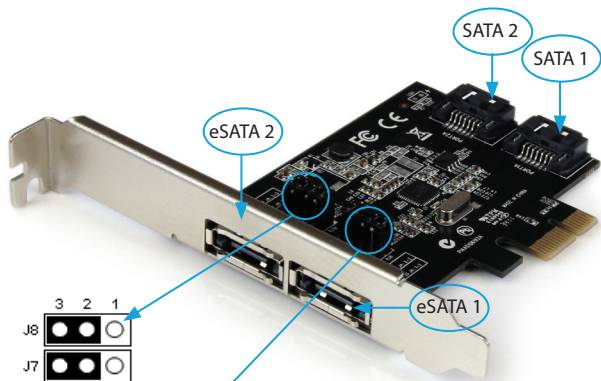
System Requirements

- PCI Express enabled computer system with available PCI Express expansion card slot
- Optical disk drive for driver installation from CD
- Microsoft® Windows® XP/ Server 2003/ Server 2008 R2/ Vista/ 7/ 8 (32/64-bit)



Installation

WARNING! PCI Express cards, like all computer equipment, can be severely damaged by static electricity. Be sure that you are properly grounded before opening your computer case or touching your PCI Express card. StarTech.com recommends that you wear an anti-static strap when installing any computer component. If an anti-static strap is unavailable, discharge yourself of any static electricity build-up by touching a large grounded metal surface (such as the computer case) for several seconds. Also be careful to handle the PCI Express card by its edges and not the gold connectors.



Jumper	Position	Active Port
J1~J4	1-2 Closed	SATA 1
	2-3 Closed (default)	eSATA 1
J5~J8	1-2 Closed	SATA 2
	2-3 Closed (default)	eSATA 2

Jumper Settings

Of the 4 physical ports located on the card, only two of the ports can be active at a time. Selecting the ports you wish to activate is accomplished via the jumper blocks located on the card. Ports SATA 1 and eSATA1 are grouped together, while ports SATA 2 and eSATA 2 are grouped together.

NOTE: By default the eSATA ports (1,2) are both active.

Hardware Installation

1. Turn your computer off and any peripherals connected to the computer (i.e. Printers, external hard drives, etc.). Unplug the power cable from the rear of the power supply on the back of the computer and disconnect all peripheral devices.
2. Remove the cover from the computer case. See documentation for your computer system for details.
3. Locate an open PCI Express slot and remove the metal cover plate on the rear of the computer case (Refer to documentation for your computer system for details.). Note that this card will work in PCI Express slots of additional lanes (i.e. x4, x8 or x16 slots).
4. Gently insert the card into the open PCI Express slot and fasten the bracket to the rear of the case.

NOTE: If installing the card into a small form factor/low profile system, replacing the pre-installed full profile bracket with the included low profile installation bracket may be necessary.

5. Place the cover back onto the computer case.
6. Insert the power cable into the socket on the power supply and reconnect all other connectors removed in Step 1.

Driver Installation

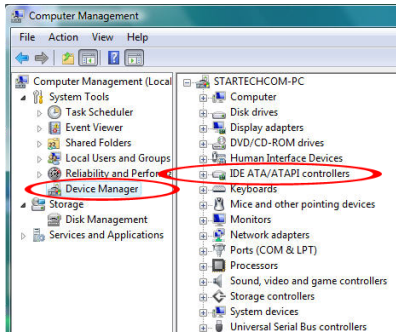
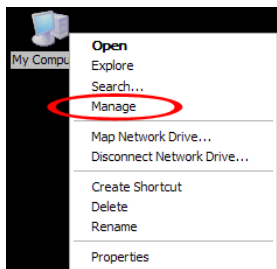
Windows XP/Vista/Server 2003/ Server 2008 R2/ 7 / 8

1. Upon starting Windows, the card should be automatically detected and Windows will install default drivers. Once this is complete, insert the included driver CD into the computer's optical drive.
2. AutoPlay should automatically launch and display all of the folders on the CD or give you the option to view all files. If not, open "My Computer" and double-click on the CD/DVD drive.
3. Enter the folder "PCIe", then "ASM106x" and double-click the file "Setup.exe".
4. This will launch the driver Installation wizard. Continue through the wizard and once complete, all the necessary drivers will be installed.
5. Restart the computer.

Verifying Installation

Windows

From the main desktop, right-click on “My Computer” (“Computer” in Vista/7), then select Manage. In the new Computer Management window, select Device Manager from the left window panel.



In the Device Manager, under the “IDE ATA/ATAPI controllers” category, you should see a new Asmedia SATA controller device listed.

Specifications

Host Interface	PCI Express 2.0 (x1 slot connector) SATA revision 3.0
Form Factor	Full/Low Profile
Chipset ID	ASMedia AS1061
External Connectors	2 x 7-pin eSATA receptacle
Internal Connectors	2 x 7-pin SATA receptacle
Maximum Data Transfer Rate	SATA III: 6 Gbps
Port Multiplier Support	Yes
Operating Temperature	0°C ~ 50°C (32°F ~ 122°F)
Storage Temperature	-20°C ~ 60°C (-4°F ~ 140°F)
Humidity	5% ~ 85% RH
Dimensions	120.0mm x 67.0mm x 20.0mm
Weight	60g
Compatible Operating Systems	Windows XP/ Server 2003/ Server 2008 R2/ Vista/ 7/ 8 (32/64-bit)

Technical Support

StarTech.com's lifetime technical support is an integral part of our commitment to provide industry-leading solutions. If you ever need help with your product, visit www.startech.com/support and access our comprehensive selection of online tools, documentation, and downloads.

For the latest drivers/software, please visit www.startech.com/downloads

Warranty Information

This product is backed by a two year warranty.

In addition, StarTech.com warrants its products against defects in materials and workmanship for the periods noted, following the initial date of purchase. During this period, the products may be returned for repair, or replacement with equivalent products at our discretion. The warranty covers parts and labor costs only. StarTech.com does not warrant its products from defects or damages arising from misuse, abuse, alteration, or normal wear and tear.

Limitation of Liability

In no event shall the liability of StarTech.com Ltd. and StarTech.com USA LLP (or their officers, directors, employees or agents) for any damages (whether direct or indirect, special, punitive, incidental, consequential, or otherwise), loss of profits, loss of business, or any pecuniary loss, arising out of or related to the use of the product exceed the actual price paid for the product. Some states do not allow the exclusion or limitation of incidental or consequential damages. If such laws apply, the limitations or exclusions contained in this statement may not apply to you.

Hard-to-find made easy. At StarTech.com, that isn't a slogan. It's a promise.

StarTech.com is your one-stop source for every connectivity part you need. From the latest technology to legacy products — and all the parts that bridge the old and new — we can help you find the parts that connect your solutions.

We make it easy to locate the parts, and we quickly deliver them wherever they need to go. Just talk to one of our tech advisors or visit our website. You'll be connected to the products you need in no time.

Visit www.startech.com for complete information on all StarTech.com products and to access exclusive resources and time-saving tools.

StarTech.com is an ISO 9001 Registered manufacturer of connectivity and technology parts. StarTech.com was founded in 1985 and has operations in the United States, Canada, the United Kingdom and Taiwan servicing a worldwide market.