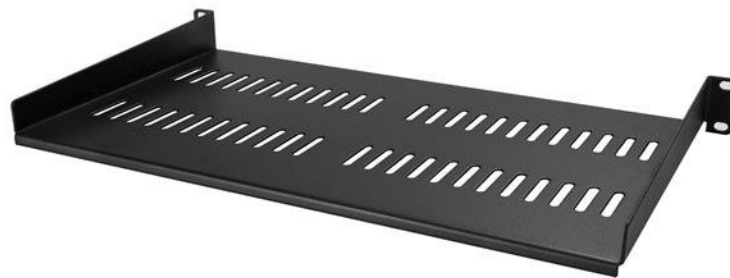


1U Vented Server Rack Cabinet Shelf - 10in Deep Fixed Cantilever Tray - Rackmount Shelf for 19" AV/Data/Network Equipment Enclosure with Cage Nuts & Screws - 44lbs capacity

Product ID: CABSHELFV1U



This 1U rack shelf lets you add 10 in. of flat storage space to any EIA-310 compliant server rack or cabinet. The shelf is vented to improve air flow and help lower temperatures in your rack.

Ensure your equipment is secure

The durable fixed-rack shelf can hold up to 20 kg (44 lbs.) of equipment and is constructed using SPCC commercial-grade cold-rolled steel.

Make the most of your available space

The 1U cantilever shelf lets you optimize your working space by giving you the ability to mount equipment to your rack instead of taking up desk or floor space. It's perfect for your SOHO (small office, home office) environment, server room or any other location with limited space available.

Customize your setup

You can install the 1U vented rack shelf in your rack at any height, giving you a stable surface for placing equipment that's un-mountable or storing your tools.

The CABSHELFV1U is backed by a StarTech.com lifetime warranty and free lifetime technical support.

Certifications, Reports and Compatibility



Applications

- Supply additional storage space for mission-critical hardware and non-rackmount equipment

Features

- **UNIVERSAL COMPATIBILITY:** 1U 19" server rack cabinet shelf 10" deep for universal fit in any existing EIA/ECA-310 compliant server/AV rack or cabinet & includes M6 Cage nuts & screws for mounting shelf
- **VENTED SHELF:** This data/network rack shelf improves airflow around devices on the shelf and within the rack
- **DURABLE DESIGN:** Heavy-duty cantilever shelf tray that is easy to install, constructed of durable 16 gauge SPCC commercial cold-rolled steel with support for weight up to 44 lbs with lifetime warranty
- **FLEXIBLE INSTALLATION:** The rackmount shelf can be mounted in multiple orientations to enable flexibility when it comes to install methods, w/ridge on one side to prevent equipment sliding off
- **LIFETIME WARRANTY:** StarTech.com offers 24 hour technical support and has been the choice of IT professionals for 30 years, conducting thorough compatibility and performance testing on all our products

Hardware	Warranty	Lifetime
	Airflow Rate	Vented
	Cable Management	No
	Frame Type	Steel
	Industry Standards	EIA/ECA-310-E
	U Height	1U
Performance	Weight Capacity (Stationary)	44.2 lb [20 kg]
Special Notes / Requirements	Note	Includes 4x C-cup washers
Physical Characteristics	Color	Black
	Internal Width	17.1 in [435 mm]
	Material	Steel
	Product Height	1.7 in [4.3 cm]
	Product Length	9.8 in [25 cm]
	Product Width	17.3 in [44 cm]
	Weight of Product	4 lb [1.8 kg]
Packaging Information	Flat Pack (Assembly Required)	No
	Package Height	2.2 in [57 mm]
	Package Length	20.9 in [53 cm]
	Package Width	10.8 in [27.5 cm]
	Shipping (Package) Weight	5.1 lb [2.3 kg]
What's in the Box	Included in Package	1 - 1U Fixed Shelf 4 - M6 Cage Nuts 4 - M6 Screws

Product appearance and specifications are subject to change without notice.