

## Yealink W75 DECT IP Mini Multi-Cell System

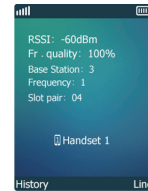
Experience DECT Roaming With Multiple Devices



The Yealink W75 DECT IP Mini Multi-Cell System, which consists of a base station (W75B) and a DECT Manager (W75DM), is designed to provide organizations with wireless coverage and easy deployment. This DECT mini multi-cell system aims to offer a scalable and reliable solution for small and medium-sized organizations of various shapes. The W75B and W75DM devices feature a modern, compact design and Yealink HD voice quality, enhanced by full-duplex technology.

## Easy Setup, Fast Deployment

The DM and Base can be physically connected to each other to establish the system. In the multicast network, administrators profit from zero touch provisioning that the system is established as soon as the base station is powered on and connected to the network. Do not worry if you are in the non-multicast network environment, just configure the IP address of the DECT Manager via the web user interface of the base station to complete the deployment.



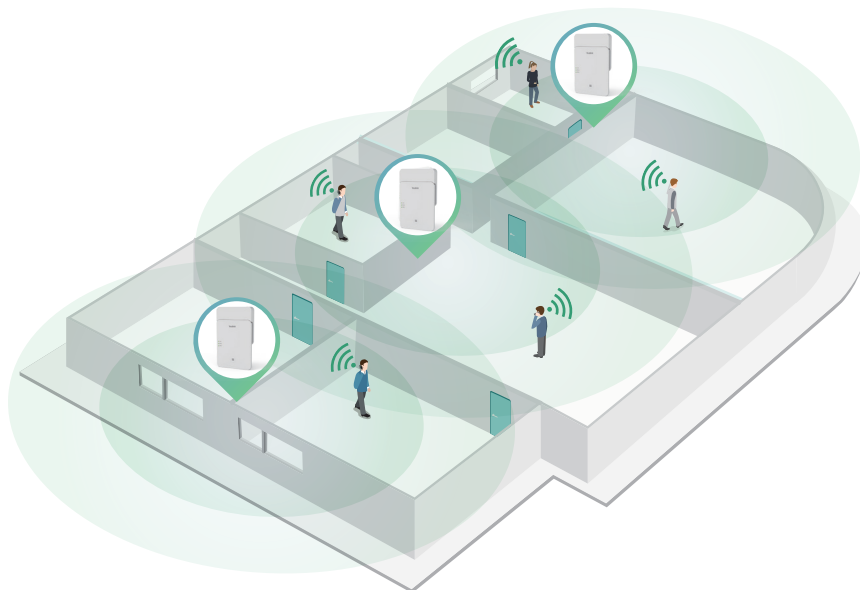
DECT Measurement



Deployment Toolkit

## Seamless Handover & Roaming

Based on Yealink DECT technology, W75 DECT IP Mini MC System provides you with both the stable call and the seamless roaming and handover. Wireless data transmission over-the-air is ensured by the DECT encryption and the wirelessly eavesdropping on a conversation is not possible either. At the same time, TLS and SRTP play a pivotal role in secure SIP communication. Pack Yealink W75 DECT IP Mini MC System with the powerful Grayscale Upgrade feature, when you perform upgrade for one handset, other handsets are free from this process and the whole system still runs in safety and stability.



## Up to 20 Handsets With 20 Parallel Calls


The Yealink W75 DECT IP Mini Multi-Cell System supports up to 20 handsets and 40 simultaneous calls, ensuring that each handset can have an active call. It eliminates the limitations of wireless coverage associated with a single base station. Additionally, the system seamlessly integrates with Yealink W56H, W57R, W59R, W71H, W73H, W74H, and W78H handsets, enabling smooth roaming and call handover between zones.



## Advanced DECT Contacts

Better compatibility with several PBX platforms makes the contacts from different platforms reachable on the Yealink W75 DECT IP Mini MC System, like Xsi directory, XML contacts. Besides, LDAP and Remote Phonebook.

## Key Specifications of the W75 DECT IP Mini Multi-Cell System

Module	Specification	W75 DECT IP Mini Multi-Cell System
System	Pic	
	Max. number of bases for system	3
	Max. number of handsets for system	20
	Simultaneous calls for system	40
	Simultaneous calls per base	2
	Indoor/outdoor range	50m/300m
	Handover	Within group
	Roaming	Whole system
	Air Synchronization	✓
	Handset module for W75 Mini MC	W56H/W57R/W59R/W71H/W73H/W74H/W78H
	OTA for handset	✓
Audio	Wideband codecs	AMR-WB (optional), G.722
	Narrowband codecs	AMR-NB (optional), PCMU(G.711μ), PCMA(G.711A), G.726, G.729, G.729A, iLBC
	HD voice	✓
Interface	Ethernet interface	10/100M
	PoE	✓
	Wall mountable	✓
Features	LDAP	✓
	XML Phonebook	✓
	BroadSoft directory (User & company)	✓
	BroadSoft call log	✓
	User access level	✓
	IPUI registration	✓
	XML browser	✓
	Shared Call Appearance (SCA)	✓
	Transport Layer Security (TLS)	TLS1.0/TLS1.2
	SRTP Support (Media)	✓
Compatibility	BroadSoft	✓
	3CX	✓
	Metaswitch	✓

