

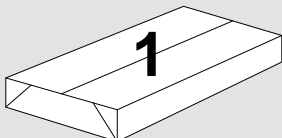
Saxon - Workstation

SWT1820-B1 & SWT1820-B2

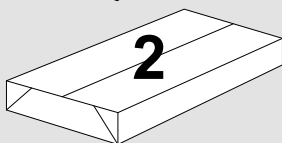


ASSEMBLY INSTRUCTIONS

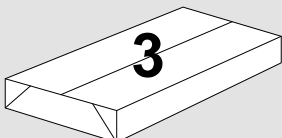
Saxon
Workstation - Low Toolbar



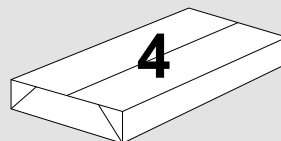
Pack 1:
1x Top Pack



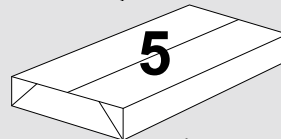
Pack 2:
1x Rail Pack
(1800w)



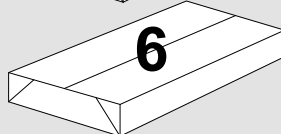
Pack 3:
1x Rail Pack
(1200w)



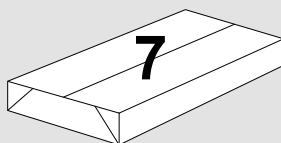
Pack 4:
1x Leg Pack



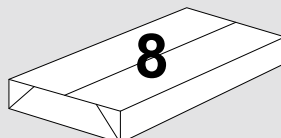
Pack 5:
1x Fitting Kit



Pack 6:
1x Tool Rail

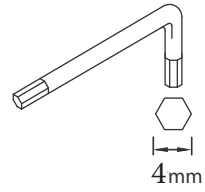
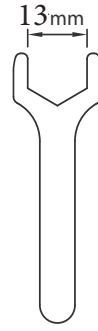
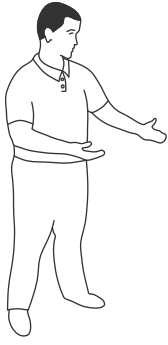


Pack 7:
2x Supports

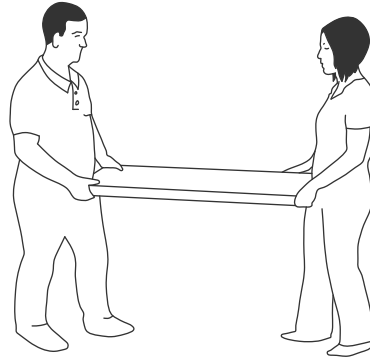
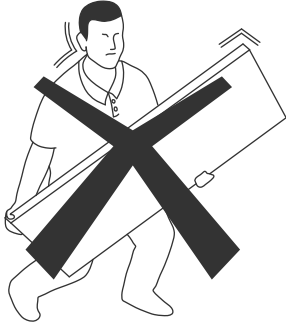


Pack 8:
1x Power Module

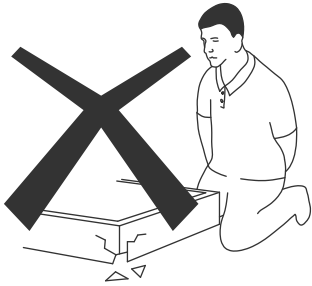
TOOLS REQUIRED
FOR ASSEMBLY



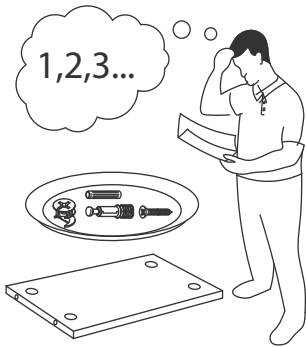
DONT STRUGGLE
2 MAN LIFT



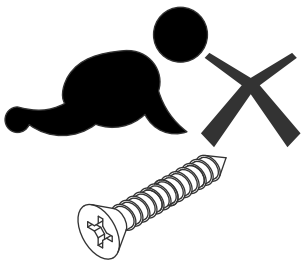
ALWAYS HANDLE
ITEMS WITH CARE



IF UNSURE CALL
FOR ASSISTANCE

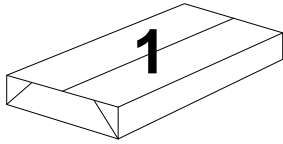


KEEP FITTINGS AWAY
FROM CHILDREN



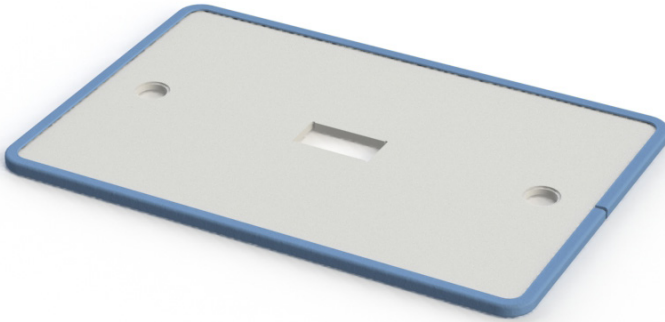


Please check that you have all the panels



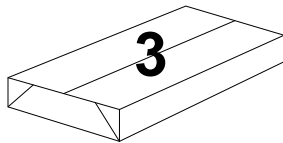
Pack 1:
1x Top Pack

1800 x 1000mm =
SWT18-12-FR21



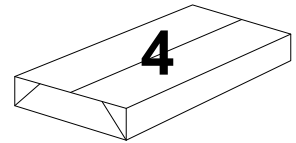
PACK 2:
1 x Leg Pack

350 x 415mm = OT-BLD
700 x 700mm = OT-ELD



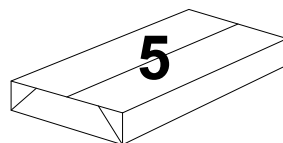
PACK 3:
1 x Rail Pack

1800mm = RP18

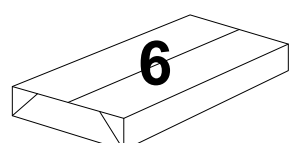
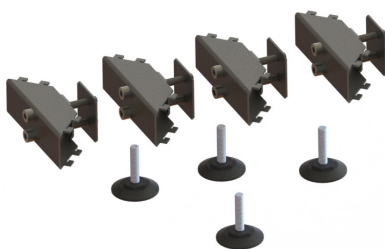


Pack 4:
1x Leg Pack

1200mm = RP12



Pack 5:
1x Fitting Kit



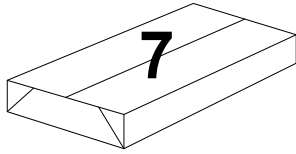
Pack 6:
1x Tool Bar

1800mm Wide =
SWt18-HR2



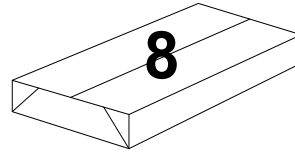


Please check that you have all the panels



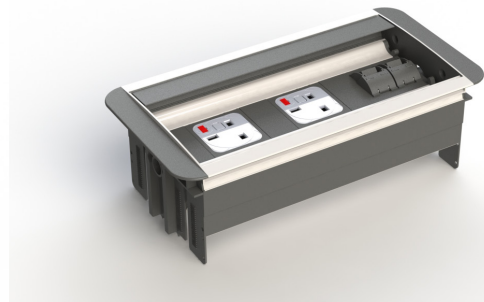
PACK 7:
2 x Supports

200mm high = SWT-DTA2
800mm high = SWT-DTA8



PACK 8:
1 x Power Module

350 x 415mm =
ENDD1-k



Please check that you have all the fittings

FITTINGS SUPPLIED



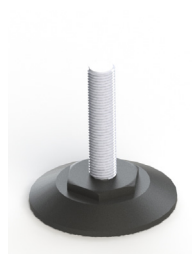
Leg Fixing Bracket

Size PCS
4



Leg Fixing Plate

Size PCS
4



Screw-in Foot - M8

Size PCS
48 Dia. x 10mm 4



Socket head Bolt - M6

Size PCS
70mm 8



Hex Bolt - M8

Size PCS
20mm 8



Connector Bolt - M6

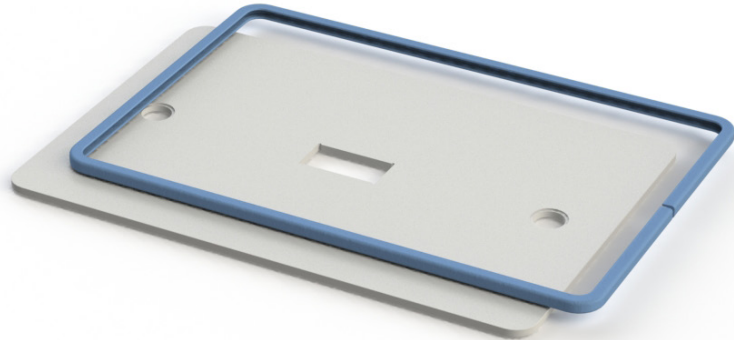
Size PCS
65mm 8

SAXON WORKSTATION ASSEMBLY

1

Step 1

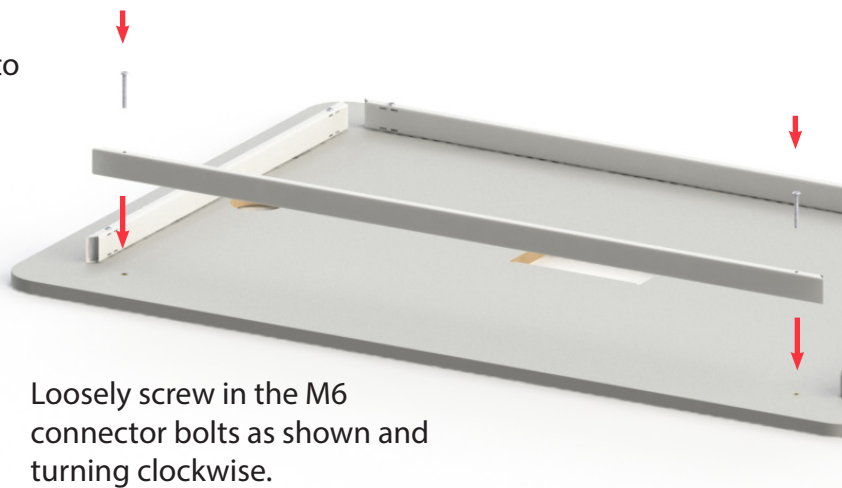
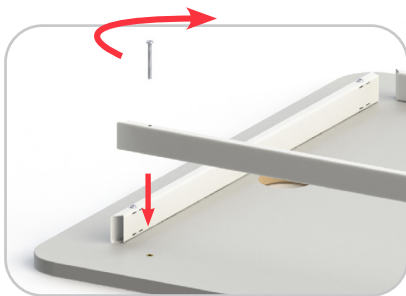
Unpack your new Saxon Workstation and please recycle all packaging.



2

Step 2

Align the fixing holes in the rails to the holes in the underside of the top panel.

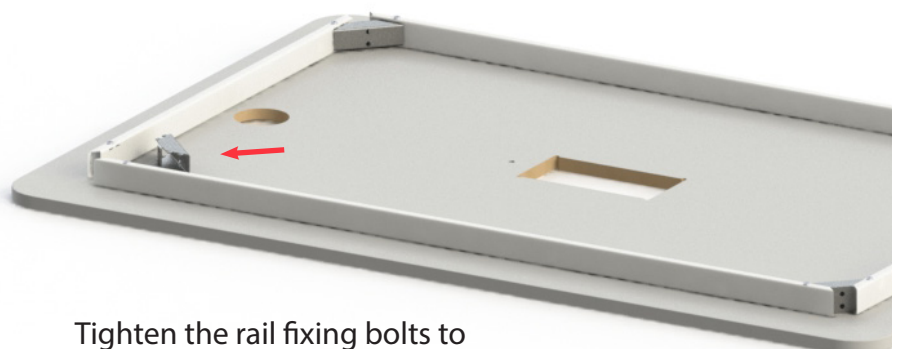
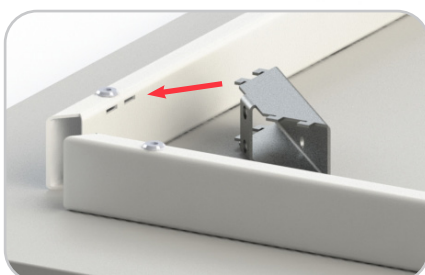


Loosely screw in the M6 connector bolts as shown and turning clockwise.

3

Step 3

Locate the brackets as shown slotting the prongs into the slots on the cross rails.

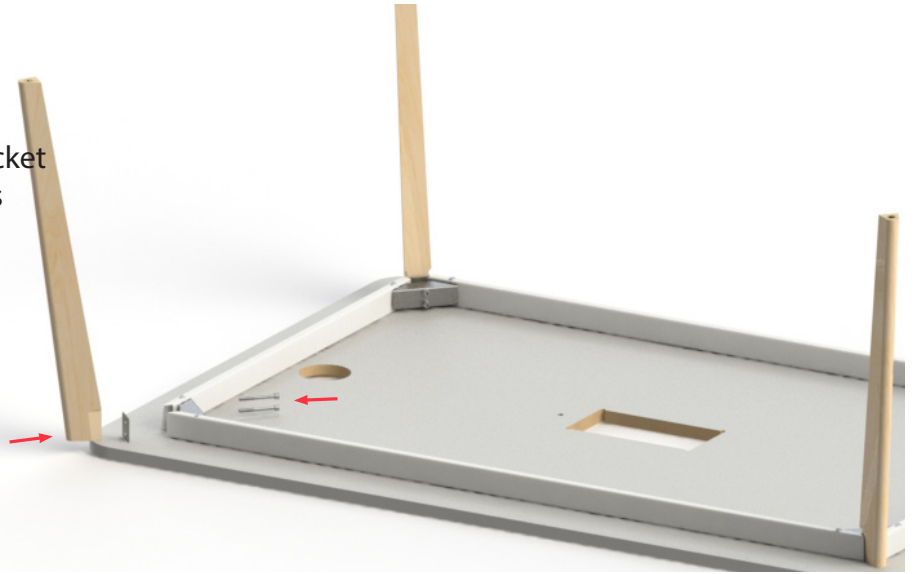
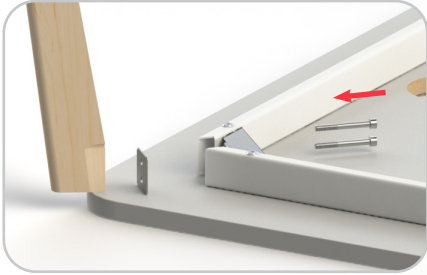


Tighten the rail fixing bolts to secure the rails to the top panel.

4

Step 4

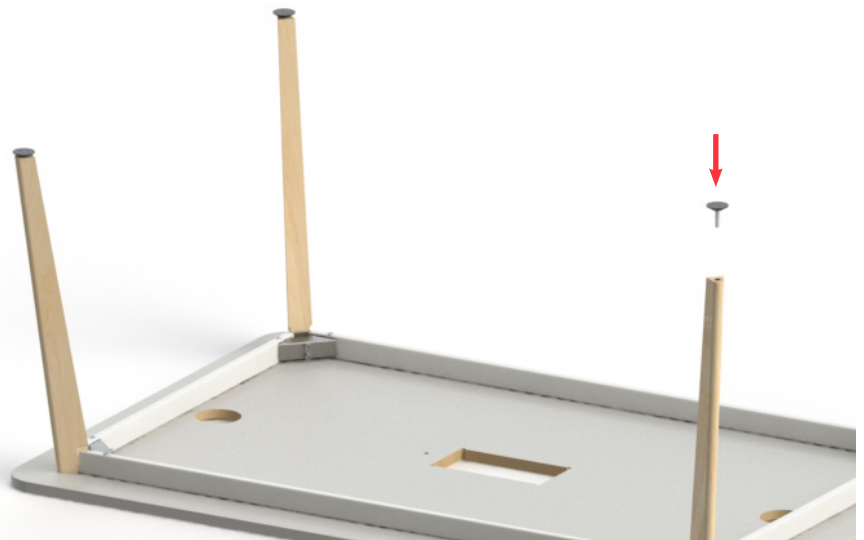
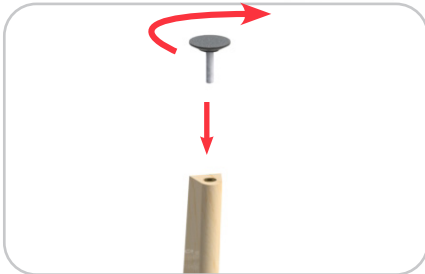
Locate all 4x legs with the M6 socket head bolts and the fixing plate as shown and tighten clockwise.



5

Step 5

Screw in the M8 adjustable foot into the leg frames as shown and turn clockwise to tighten.



6

Step 6

Carefully turn over the Workstation.
(2 person lift required)



7

Step 7

Locate the power module as shown and clip in place.



8

Step 8

Locate the supports as shown, and attach using M8 hex bolts to secure the brackets to the underside.



9

Step 8

Slide the toolbar and fix in place using the M6 grub screws pre-fitted to the supports.

