

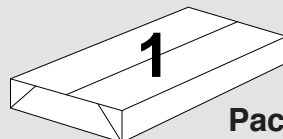
Anson - Square Table

ANS-TBS12

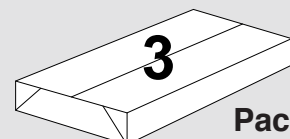


ASSEMBLY INSTRUCTIONS

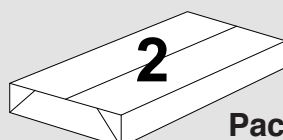
Anson
Square Table



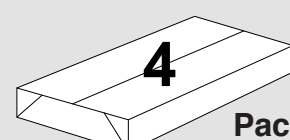
Pack 1:
Top Pack



Pack 3:
Corner Kit

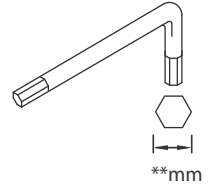


Pack 2:
Leg Kit

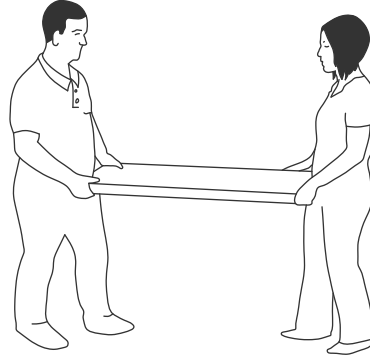
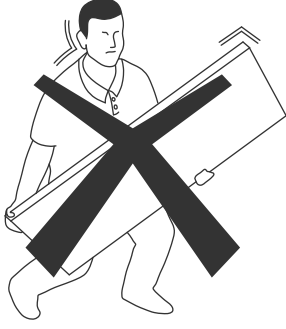


Pack 4:
Rail Kit

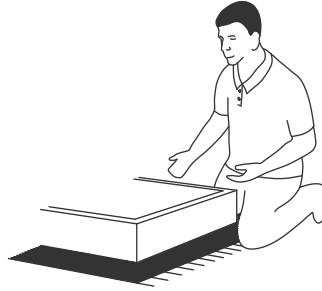
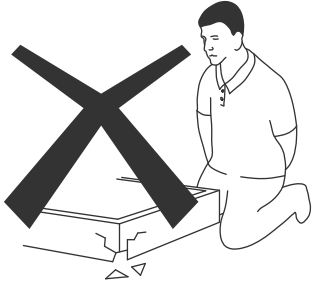
TOOLS REQUIRED
FOR ASSEMBLY



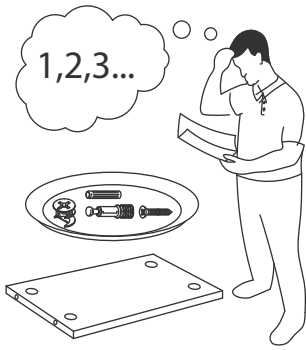
DONT STRUGGLE
2 MAN LIFT



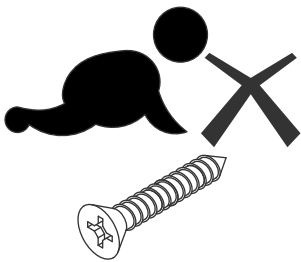
ALWAYS HANDLE
ITEMS WITH CARE



IF UNSURE CALL
FOR ASSISTANCE



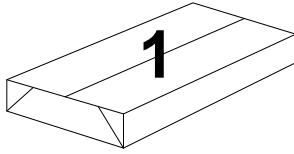
KEEP FITTINGS AWAY
FROM CHILDREN





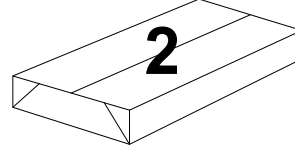
Please check that you have all the panels

ANS-TBS12-TOP

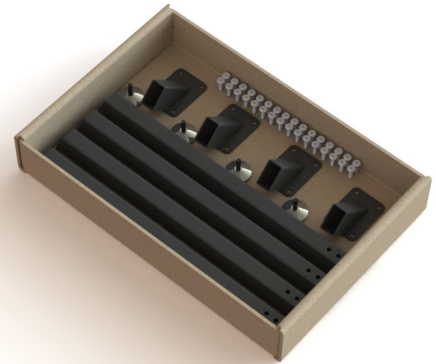
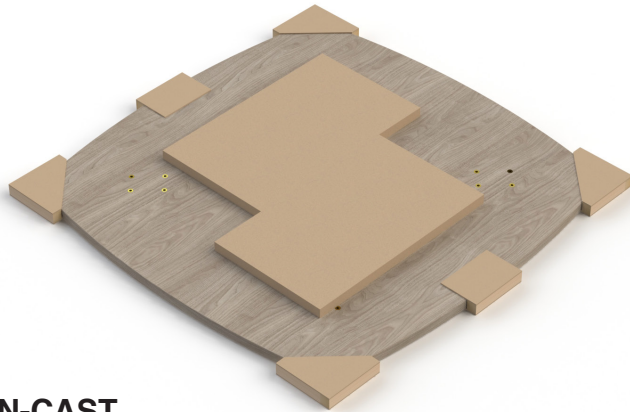


PACK 1:
1 x Top Panel

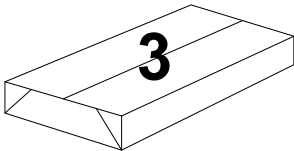
HN-TAB-LEG-KIT



PACK 2:
1 x Leg Kit

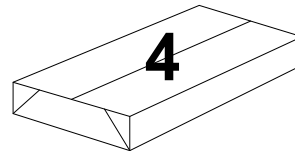


HN-CAST

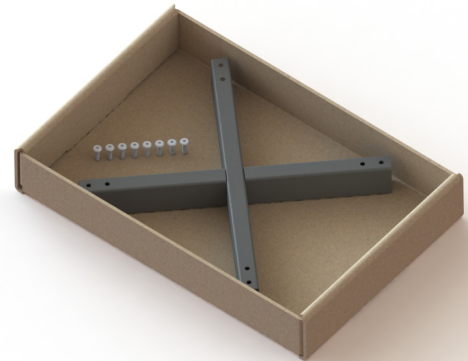


PACK 3:
1 x Corner Kit

HN-TAB-X-RAIL-KIT



PACK 4:
1 x Rail Kit



Please check that you have all the fittings

FITTINGS SUPPLIED



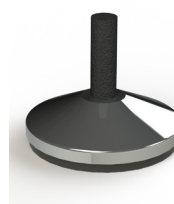
M6 Connector Bolt



Size
25mm

PCS
40

Adjustable Foot



Size
25mm dia.

PCS
4

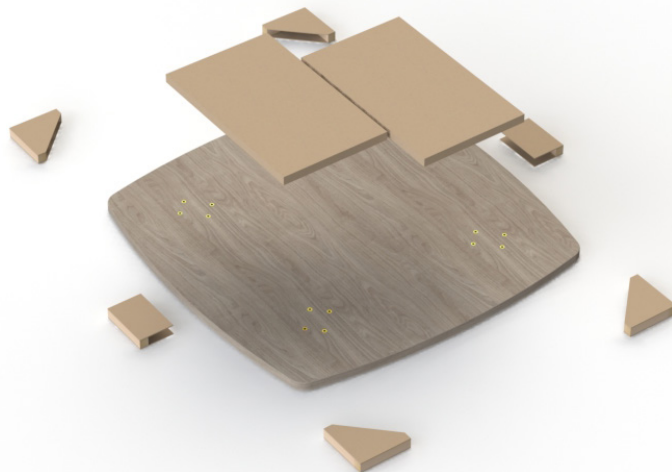
ANSON SQUARE TABLE ASSEMBLY

1

Step 1

Unpack your Anson square table and please recycle all packaging.

Place the top face down so that the fixing holes are face-up.



2

Step 2

Assemble the legs as per 'image a' using parts from leg kit & corner kit.

Link all the legs together attaching them with the rail kit as per 'image b'

image 'a'.



image 'b'.



3

Step 3

Once the frame is assembled place on the underside of the top and affix using the 16x M6 bolts as shown.

