

Visitor Badge Printer

Helps you improve security by providing guests attending your business or events with an identification badge

QL-820NBVM

www.brother.eu



The Brother QL-820NWBVM visitor badge printer offers you additional security by printing badges for guests attending your business or event.



Use the Brother P-touch Editor label design software on your PC and Mac or the Brother iPrint&Label app on your tablet or smartphone to enter your visitor's details. Then print a non-adhesive badge with their details using the included rolls, and insert into a clip-on badge holder before handing to your guest.

Or upgrade to a full visitor management solution using compatible third-party apps* that tracks all guests on-site and offer a wide range of additional benefits.

* Please check printer compatibility with third party apps to ensure they support the QL-820NWBVM or QL-820NWB





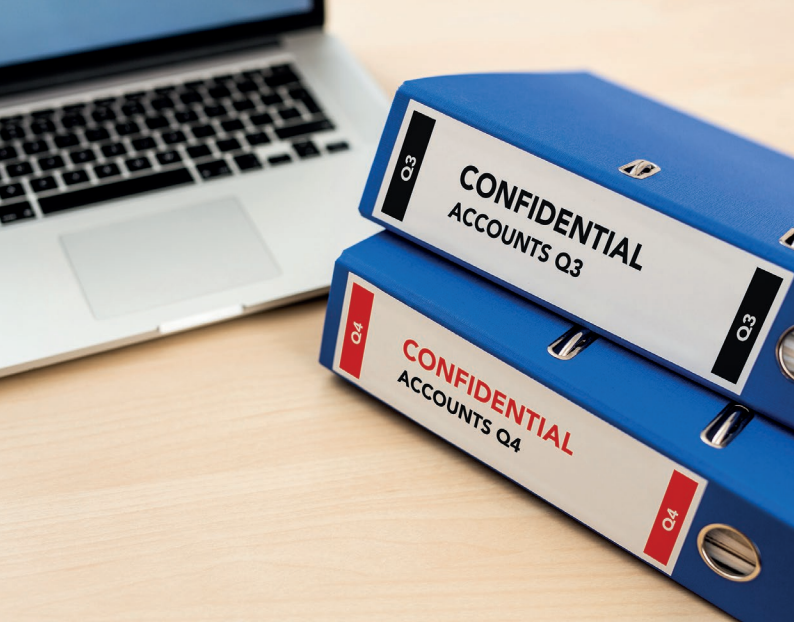
Print in black and red

The QL-820NWBVM also enables printing in black and red over the entire printable area of the label using the Brother DK-22205 label roll, ensuring key information is highlighted such as “valid on” dates.

Direct-to-clothing adhesive labels

As an alternative to the non-adhesive roll, the Brother DK-11234 self-adhesive badge labels have been developed to stick directly to clothing. As no clip-on badge holder is required it makes it ideal for handing out to guests arriving at events. Once each guest leaves, they can simply peel off the label before disposing of it.





Added versatility

In addition to visitor badges, you can also produce labels for document filing, custom signage, envelopes, packages, shelving and more.

Widest range of connectivity options

Boasting the highest print speed and the most connectivity options in its class, the QL-820NWBVM offers you various connectivity options, allowing you to choose the best one for your needs.

- ✓ USB to print locally from your PC or Mac
- ✓ Ethernet to print remotely from your PC or Mac
- ✓ Wi-Fi and Bluetooth® to quickly and easily connect and print from your tablet or smartphone as well as your computer



Labels for all applications

Brother DK rolls are available in a range of traditional pre-sized die-cut labels, or continuous rolls that can be trimmed to the precise length needed (up to one metre). Our continuous rolls also come in adhesive paper, or if needed choose from white, yellow or transparent plastic film materials too.

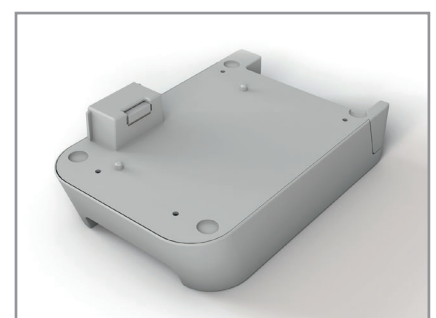
DK Die-Cut Labels	Material	Colour	Size	Item No.
Adhesive name badge label (260/roll)	Paper	White	60 x 86 mm	DK-11234
Standard address label (400/roll)	Paper	White	29 x 90 mm	DK-11201
Large address label (400/roll)	Paper	White	38 x 90 mm	DK-11208
Small address label (800/roll)	Paper	White	29 x 62 mm	DK-11209
Shipping label (300/roll)	Paper	White	62 x 100 mm	DK-11202
File folder label (300/roll)	Paper	White	17 x 87 mm	DK-11203
Multi-purpose label (400/roll)	Paper	White	17 x 54 mm	DK-11204
Square label (1000/roll)	Paper	White	23 x 23 mm	DK-11221
CD/DVD label (100/roll)	Film	White	58 mm	DK-11207
Round label (1200/roll)	Paper	White	12 mm	DK-11219
Round label (1000/roll)	Paper	White	24 mm	DK-11218

DK Continuous-Length Tapes - 30.48m	Material	Colour	Size	Item No.
Continuous-length	Paper	White	12 mm	DK-22214
Continuous-length	Paper	White	29 mm	DK-22210
Continuous-length	Paper	White	38 mm	DK-22225
Continuous-length	Paper	White	50 mm	DK-22223
Continuous-length	Paper, non-adhesive	White	54 mm	DK-N55224
Continuous-length	Paper	White	62 mm	DK-22205
Continuous-length	Paper, removable	White	62 mm	DK-44205
Continuous-length	Paper, removable	Yellow	62 mm	DK-44605

DK Continuous-Length Tapes - 15.24m	Material	Colour	Size	Item No.
Continuous-length	Film	White	29 mm	DK-22211
Continuous-length	Film	White	62 mm	DK-22212
Continuous-length	Film	Yellow	62 mm	DK-22606
Continuous-length	Film	Clear	62 mm	DK-22113
Continuous-length - Black/Red print	Paper	White	62 mm	DK-22251

Optional rechargeable battery unit (PA-BU-001)

This li-ion rechargeable battery unit mounts to the base of the QL-810W and QL-820NWB to offer label printing away from power sources. This makes it ideal for use on trollies or carts, or for exhibition badge printing. Features a fast-charge of under 2 hours 30 minutes, and the capability to print up to 4,300 labels (mono) or 1,400 labels (colour) per charge.*



* Continuous printing using USB when fully charged

Included items

In the box

QL-820NBVM badge printer
 3 x DK-N55224 non-adhesive card
 rolls (30.48m each)
 USB cable
 AC adapter and power cord
 Documentation

Printing / Media

Print technology	Direct thermal with 2 colour print capability (black and red)
Print resolution	300x300dpi (standard) / 300x600dpi (high resolution mode)
Print speed (single colour)	Max 176mm/sec (equivalent to 110 standard address labels/minute)
Print speed (two-colour)	Max 24mm/sec (equivalent to 15 x 90mm length labels/minute)
Label widths	12mm - 62mm
Maximum print width	60.96mm
Maximum print length	1 metre
Media sensor type	Reflective
Cutter	Yes (full cut / guillotine type)
Media types	DK Rolls (DK die-cut labels / DK continuous tape)

LCD

Type	320x120 dot graphic LCD with backlight
------	--

Connectivity

USB	320x120 dot graphic LCD with backlight
USB host capability	Yes (HID class)
Bluetooth	Bluetooth 2.1+EDR
Bluetooth profiles	SPP (Serial Port Profile) OPP (Object Push Profile) BIP (Basic Imaging Profile) HCRP (Hard Copy Cable Replacement Profile)
iOS and Android compatibility	Yes
Wireless LAN	IEEE802.11b/g/n
Wireless LAN security	WEP, WPA-PSK/WPA2-PSK (TKIP/AES), LEAP (CKIP), EAP-FAST (TKIP/AES), PEAP (TKIP/AES), EAP-TTLS (TKIP/AES), EAP-TLS (TKIP/AES)
Airprint	Yes

Memory

Flash (for label templates)	6MB
Locations (for label templates)	255

Power

Power	100-240V AC external adapter (auto switching)
Battery (optional accessory)	Li-ion battery including base
Battery print yield	4,300 labels (mono) / 1,400 labels (2 colour)
Battery Charging time	Less than 2 hours 30 minutes

Weights/Dimensions

Dimensions	125(w) x 234(h) x 145(d) mm
Weight	1.16kg

Software / Firmware

Operating system support (visit http://support.brother.com for latest downloads and support)	Windows® 8 / Windows® 8.1 / Windows® 10 Windows Server® 2008 / 2008 R2 / Windows® Server 2012 / 2012 R2 Android 4.1 or higher (SDK) iOS 6 or higher (SDK only) iOS 8 or higher (iPrint & Label)
SDK availability (visit http://www.brother.eu/developer)	b-PAC (for Windows) Brother Print SDK for Android™ Brother Print SDK for iPhone/iPad (for iOS)
Supported printer commands	ESC/P P-touch Template Raster
Barcode symbologies (using P-touch Editor)	CODE39, CODE128, UCC/EAN128 (GS1-128), ITF (I-2/5), CODABAR (NW-7), UPC-A, UPC-E, EAN13, EAN8, ISBN-2 (EAN13 AddOn2), ISBN-5 (EAN13 AddOn5), Laser Barcode, POSTNET, RSS (RSS14 Standard, RSS14 Truncated, RSS14 Stacked, RSS14 Stacked Omni, RSS Limited, RSS Expanded, RSS Expanded Stacked), PDF417 (Standard, Truncate, Micro), QR code (Model1, Model2, Micro), Data Matrix (ECC Square, ECC Rectangular), MaxiCode (Model2, Model3, Model4, Model5) RSS symbols / CODE93 / POSTNET / UPC/EAN EXTENSION / MSI / QR Code (model 1, model 2, micro QR) PDF417 (Standard, Truncate, MicroPDF417) / Data Matrix (ECC200 Square, ECC200 Rectangular) / MaxiCode / Aztec
Barcode symbologies (Built-in printer firmware)	CODE39, CODE128, UCC/EAN-128 (GS1-128), ITF(I-2/5), CODABAR (NW-7), UPC-A, UPC-E, EAN13 (JAN13), EAN8, GS1 DataBar (RSS)(GS1 DataBar Omnidirectional,GS1 DataBar Truncated,GS1 DataBar Stacked, GS1 DataBar Stacked Omnidirectional,GS1 DataBar Limited,GS1 DataBar Expanded,GS1 DataBar Expanded Stacked), PDF417 (Standard, Truncate, Micro), QR Code (Model 1, Model 2, Micro), Data Matrix (ECC200 Square, ECC200 Rectangular), MaxiCode, CODE93, POSTNET, UPC-E EXTENTION
Internal fonts	Bitmap fonts: Letter Gothic Bold, Helsinki, Brussels, San Diego, Brougham Font sizes: 24, 32, 49 dots Outline fonts: Letter Gothic Bold, Helsinki, Brussels Font sizes: 33-400 dots (22 sizes)

brother

at your side

Contact:

www.brother.eu

Brother International Europe Ltd

Brother House, 1 Tame Street, Audenshaw,
Manchester M34 5JE

Tel: +44(0)161 330 6531

Fax: +44(0)161 330 5520