



BEESWIFT
FOCUSED ON SAFETY

Product Code:

CM1309

Selling UOM:

Each

Pack Size:

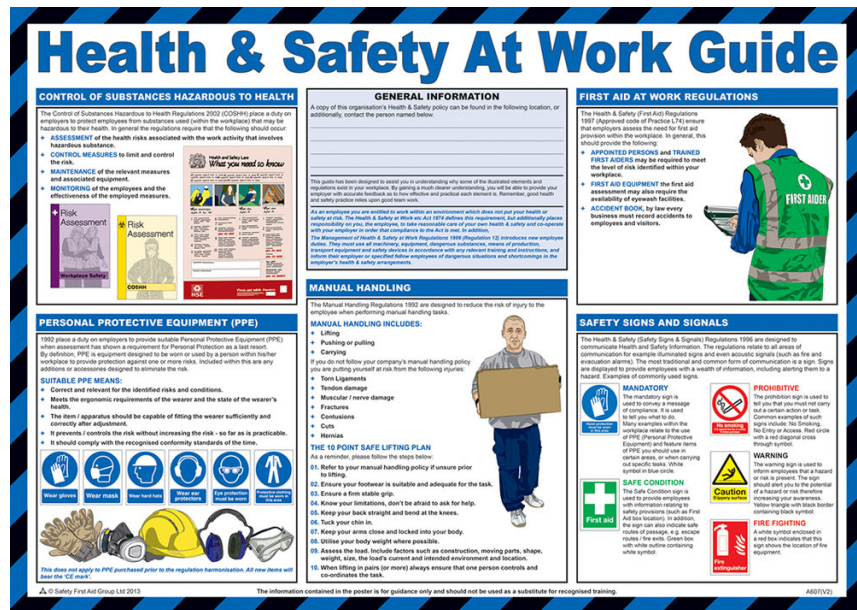
1

SPECIFICATION SHEET

HEALTH AND SAFETY AT WORK POSTER



- User friendly text and clear instructions show employees how to prevent accidents and injury whilst maintaining a healthy working environment
- Durable laminated construction with full colour illustrations
- Compiled by qualified health and safety practitioners
- Size 59 x 42cm (A2 Paper size)



Packaging Waste

Plastic

Carton Weight:

0.0944kg

Type

Outer

Units

1

Weight(g)

20.00

Length(mm)

Width(mm)

Height(mm)