

@-MOTION R15K steel 33 chrome with an FS mechanism



DESCRIPTION

Seat and backrest

- soft upholstered seat
- fine mesh backrest available in a range of colours

Mechanism

- free floating seat and backrest
- backrest and seat synchro tilting at the rate 2:1
- maximum backrest tilt angle 20° at 11° seat tilt
- possibility of seat and backrest lock in 5 positions
- adjustable backrest tilt force
- Anti-shock - the feature controls the backrest to avoid hitting a user's back
- seat depth adjustment
- smoothly adjustable chair height with pneumatic lift

Armrests

- armrests adjustable across 3 dimensions

Base

- polished aluminum

Castors

- self-braking castors for carpets or parquets

Other

- visitor version available

FINISHES

CONTRACT



Composition: 100% polyester

Weight: 320 g/m²

Abrasion Resistance: 100 000 Martindale cycles

Flammability: EN 1021-1, EN 1021-2, BS 7176 low hazard, BS 7176 medium hazard, BS 5852 Crib 5, NF P 503 M1, DIN 4102 B1, UNI 9174 Classe 1

Other: Recycled EU Flower Certified

MICROFIBRA



Composition: 83% polyester, 17% cotton

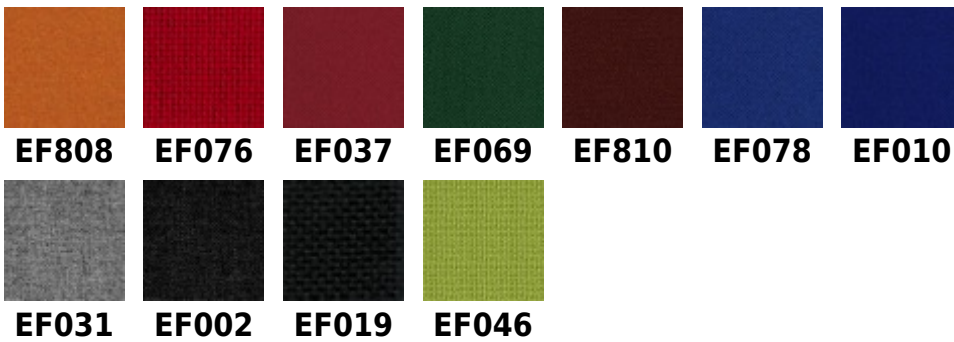
Weight: 355 g/m²

Abrasion Resistance: 100 000 Martindale cycles

Flammability: EN 1021-1, EN 1021-2

Other: Zero Spot - protective layer against dirt, stains & water

OBAN



Composition: 100% polypropylene

Weight: 230 g/m²

Abrasion Resistance: grade A tested in accordance with EN 14465:2003

Flammability: EN 1021-1

Other: hygienic certificate by National Hygiene Institute in Poland

LUCIA



Composition: 100% polyester

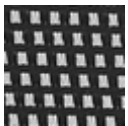
Weight: 260g/m²

Abrasion Resistance: 50 000 Martindale cycles

Flammability: EN 1021-1, EN 1021-2, BS 7176 low hazard, BS 476 Class 1

Other: Recycled EU Flower Certified

MESH [@-MOTION]



@-Motion net

Composition: 100% polyester

Weight: 353 g/m²

Other: certificate Öko Tex 100 – the fabric is tested against harmful to health substances at each stage of production

BONDAI



Composition: 100% polyester

Weight: 250 g/m²

Abrasion Resistance: 150 000 Martindale cycles

Flammability: EN 1021-1, EN 1021-2, BS 7176 medium hazard, BS 5852 Crib 5

KAIMAN



Composition: upper layer: 100% polyurethane
bottom layer: 70% polyester, 30% cotton

Weight: 435 g/m²

Abrasion Resistance: 100 000 Martindale cycles

Flammability: BS 5885 Source 0

Other: Hydrolisis (DIN EN ISO 32100 (DIN 53351) / DIN 53359) - 15 000 revs

SEMPRE



Composition: 100% polyester

Weight: 366 g/m²

Abrasion Resistance: 160 000 Martindale cycles

Flammability: EN 1021-1, EN 1021-2

Other: hygienic certificate by National Hygiene Institute in Poland

VALENCIA



Composition: upper layer: 100% vinyl, bottom layer: 100% polyester Hi-Loft

Weight: 650 g/m²

Abrasion Resistance: 300 000 Martindale cycles

Flammability: EN 1021-1, EN 1021-2, DIN 4102 B2, NF P 92-503 M2, Önorm B 3825, Önorm A 3800-1 Q1

Other: EN 71-3 Safety of toys (migration of certain elements)

PERMABLOK3® - superior antibacterial, antistain and antifungal protection

XTREME



Composition: 100% polyester FR

Weight: 310 g/m²

Abrasion Resistance: 100 000 Martindale cycles

Flammability: EN 1021-1, EN 1021-2, BS 7176 low hazard, BS 7176 medium hazard, BS 5852 Crib 5, DIN 4102 B1, UNI 9174 Classe 1

FINE LEATHER SD



Composition: soft grain leather (0.9 - 1.1 mm), thoroughly dyed (completely dyed)

FINE LEATHER LE



LE06

LE13

LE14

LE01

Composition: soft grain leather (0,9 - 1,1 mm), thoroughly dyed (completely dyed)

ERA



CSE_21

CSE_02

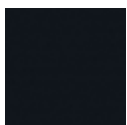
CSE_03

CSE_07

CSE_10

CSE_11

CSE_12



CSE_14



CSE_16



CSE_19



CSE_20

Composition: 100% polyester

Weight: 320 g/m²

Abrasion Resistance: ≥100 000 Martindale cycles

Flammability: EN 1021-1, EN 1021-2, BS 7176 LOW hazard

All rights reserved 2013 Nowy Styl Group

CONTACT

Nowy Styl Sp. z o.o.
Pużaka 49
38-400 Krosno
Tel. +48 13 43 76 100
Fax +48 13 43 62 732
info@nowystylgroup.com

Export Department

Mięsowicza 6
38-400 Krosno
Poland
Tel. +48 13 43 76 111
export@nowystylgroup.com

Marketing Department

Warszawska 15
32-086 Węgrzce
Poland
Tel. +48 12 63 98 602