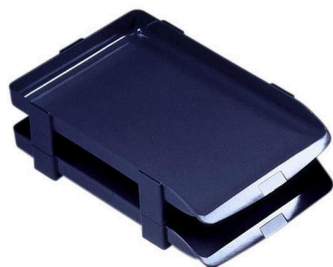


## Agenda Letter Tray with Non-Slip Feet Charcoal (35 Sheet Capacity)

25200

### Product Description

Agenda Classic is a traditional range of quality Desk Accessories. Streamlined letter tray complete with labelling system and non-slip feet.



### Product information

**Gross weight** 0.29kg

### Retail Packaging Information

**Depth** 405mm  
**Width** 265mm  
**Height** 463mm  
**Gross weight** 0.41kg  
**UPC#** 5028252009317  
**Unit quantity** 1

### Master Case Information

**UPC#** 95028252009310  
**Unit quantity** 200

### Shipping Information

**Country of origin** GB  
**Minimum Order Quantity** 1

### General information

**Colour** Agenda Charcoal

### Features

- Economical 35mm deep tray; Accepts five risers for added stability; Variable height combinations, maximum three risers between each tray; Comes complete with risers; Matching accessories available
- Accepts five risers for added stability.
- Fifth riser at back protects papers slipping through.
- Variable height combinations, maximum three risers between each tray.
- Matching accessories available.
- Economical 35mm deep tray.

### Specifications

- **Colour** Charcoal